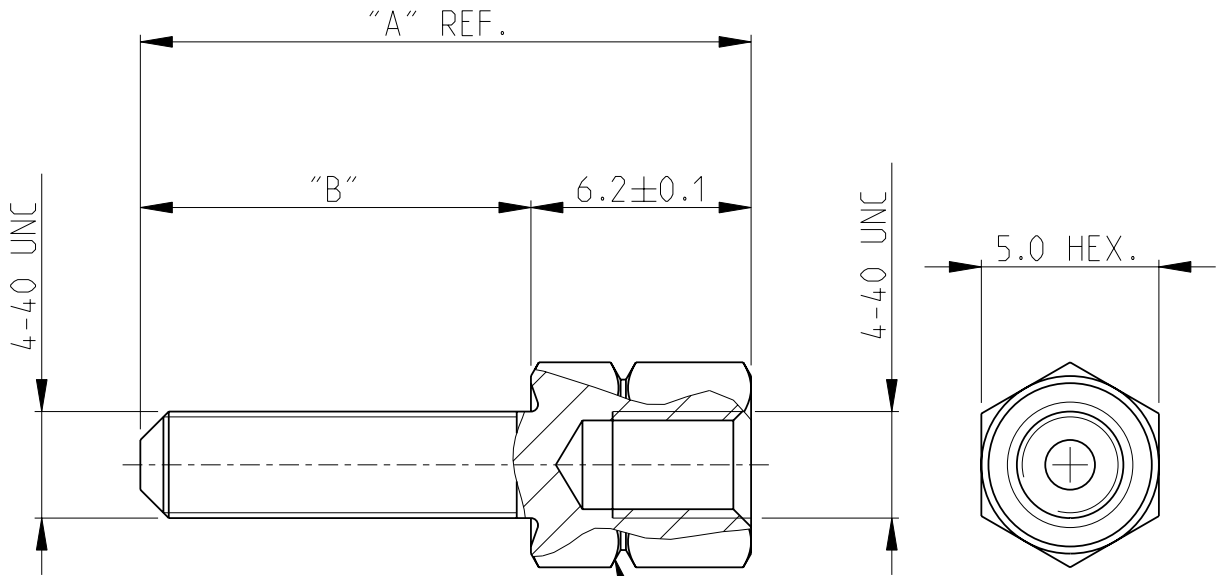


LOC	DIST	REVISIONS					
A1	-	P	LTR	DESCRIPTION	DATE	DWN	APVD
		F		H-9720	21APR92	SM	CVT
		G1		REDRAWN	6JUN05	ACK	MS
		G2		REVISED PER ECO-10-00045	12JAN10	KK	AEG
		J		ECR-11-005934	28MAR11	RK	KMA



NOTE

- 1 OBSOLETE PARTS: OBSOLETE CIS STERMLINING PER D.RENAUD/D.SINSI
2. MAXIMUM MOUNTING TORQUE 0.6 Nm.

9,2	3,0	PLAIN	ARCAP	3-828 102-3
9,2	3,0	TINPLATED	BRASS	3-828 102-1
17,2	11,0	PLAIN	ARCAP	2-828 102-3
17,2	11,0	TINPLATED	BRASS	2-828 102-1
15,9	9,7	PLAIN	ARCAP	1-828 102-3
15,9	9,7	TINPLATED	BRASS	1-828 102-1
11,2	5,0	PLAIN	ARCAP	828 102-3
11,2	5,0	TINPLATED	BRASS	828 102-1
DIM. "A"	DIM. "B"	FINISH	MATERIAL	PARTNUMBER

1 OBSOLETE

2005

RELEASED FOR PUBLICATION

TYCO ELECTRONICS CORPORATION ALL RIGHTS RESERVED.

THIS DRAWING IS UNCLASSIFIED

© COPYRIGHT 2000

DIMENSIONS:		DWN	06JUN2005	MATERIAL	-	FINISH	-
mm		G.ACKERMANN					
TOLERANCES UNLESS OTHERWISE SPECIFIED:		CHK	06JUN2005				
0 PLC ±		M.SCHAARSCHMIDT					
1 PLC ±0.2		APVD	06JUN2005	NAME			
2 PLC ±0.2		G.FELDMEIER		SCREWLOCK, FEMALE HD-SERIES			
3 PLC ±		PRODUCT SPEC		BEFESTIGUNGSSCHRAUBE, BUCHSENLEISTE			
4 PLC ±		APPLICATION SPEC		SIZE	CAGE CODE	DRAWING NO	RESTRICTED TO
ANGLES ±2°				A 4	00779	©=828102	-
		WEIGHT	-	CUSTOMER DRAWING		SCALE	5:1
						SHEET	1 OF 1
						REV	J