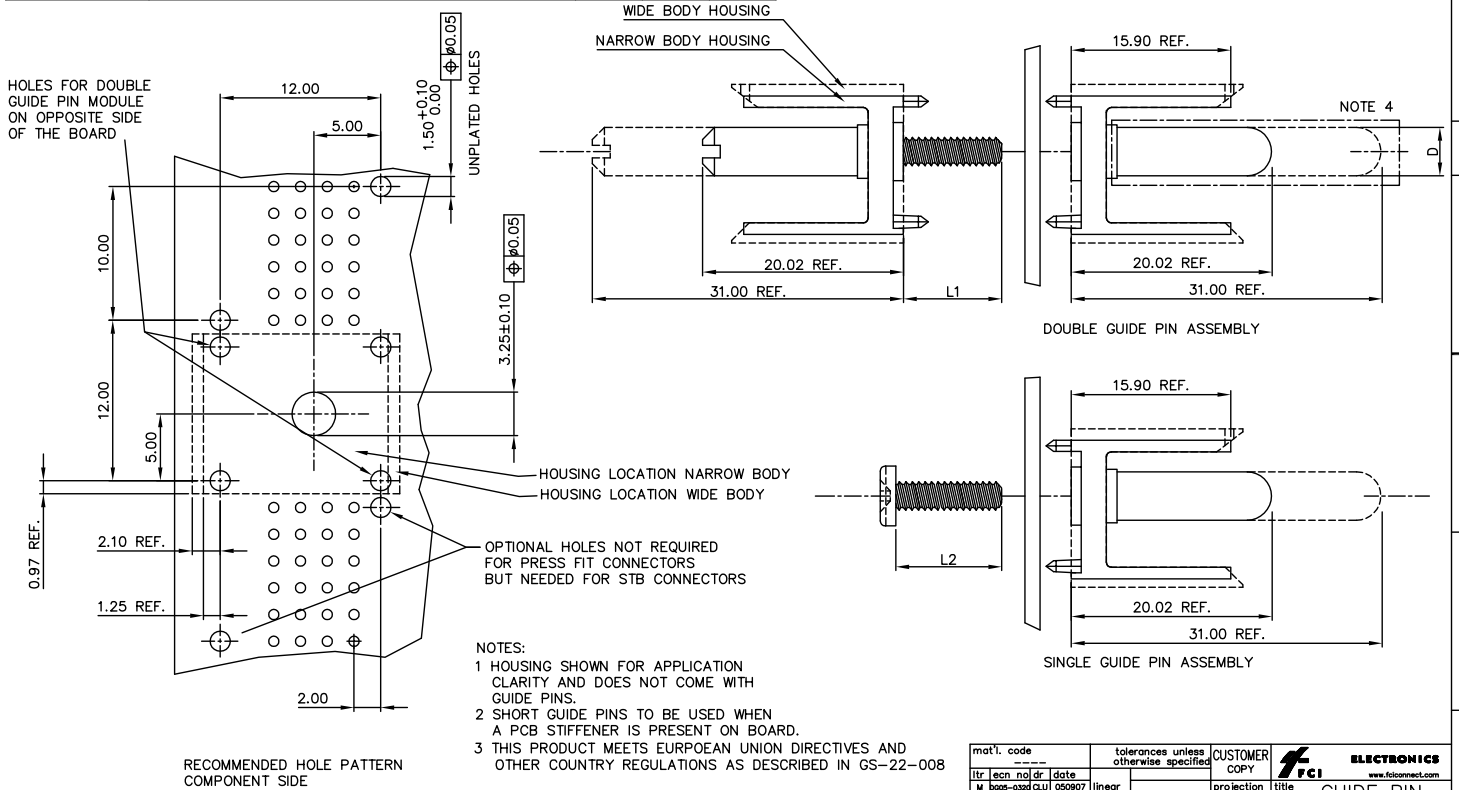


PRODUCT NUMBER	DESCRIPTION	D	L1	L2
70295-001LF	SHORT SINGLE GUIDE PIN WITH COMBO PAN HEAD SCREW	4.57		12.7
70295-002LF	LONG SINGLE GUIDE PIN WITH COMBO PAN HEAD SCREW	4.57		12.7
70295-003LF	SHORT DOUBLE GUIDE PIN	4.57	12.7	
70295-004LF	LONG DOUBLE GUIDE PIN	4.57	12.7	
70295-007LF	LONG DOUBLE GUIDE PIN FOR PCB 10mm THICKNESS	4.57	14.7	
70295-008LF	SHORT SINGLE GUIDE PIN WITH COMBO PAN HEAD SCREW DIAMETER GUIDE PIN REDUCED TO 4.2 mm	4.2		12.7



- NOTES:
- HOUSING SHOWN FOR APPLICATION CLARITY AND DOES NOT COME WITH GUIDE PINS.
 - SHORT GUIDE PINS TO BE USED WHEN A PCB STIFFENER IS PRESENT ON BOARD.
 - THIS PRODUCT MEETS EUROPEAN UNION DIRECTIVES AND OTHER COUNTRY REGULATIONS AS DESCRIBED IN GS-22-008

mat'l. code		tolerances unless otherwise specified		CUSTOMER COPY	ELECTRONICS	
ltr	ecm	no	dr	date	projection	title
M	0008-0320	CU		050907	ASSEMBLY	GUIDE PIN ASSEMBLY 12 mm
G	HC8056	DOB	981027	angles	product family	METRAL(tm)
H	H90222	HME	990323	dr	STU STONER	901026
J	H90221	HME	990407	ref	STU STONER	901026
K	HC9018	DOB	990727	chr	P. SPITALKY	950928
L	H00023	LLA	000117	gpp	D. ANDREWS	910315
sheet	revision	U				
1						
size						
A2						
scale						
5:1						
code						
70295						
sheet						
213						
1 of 1						