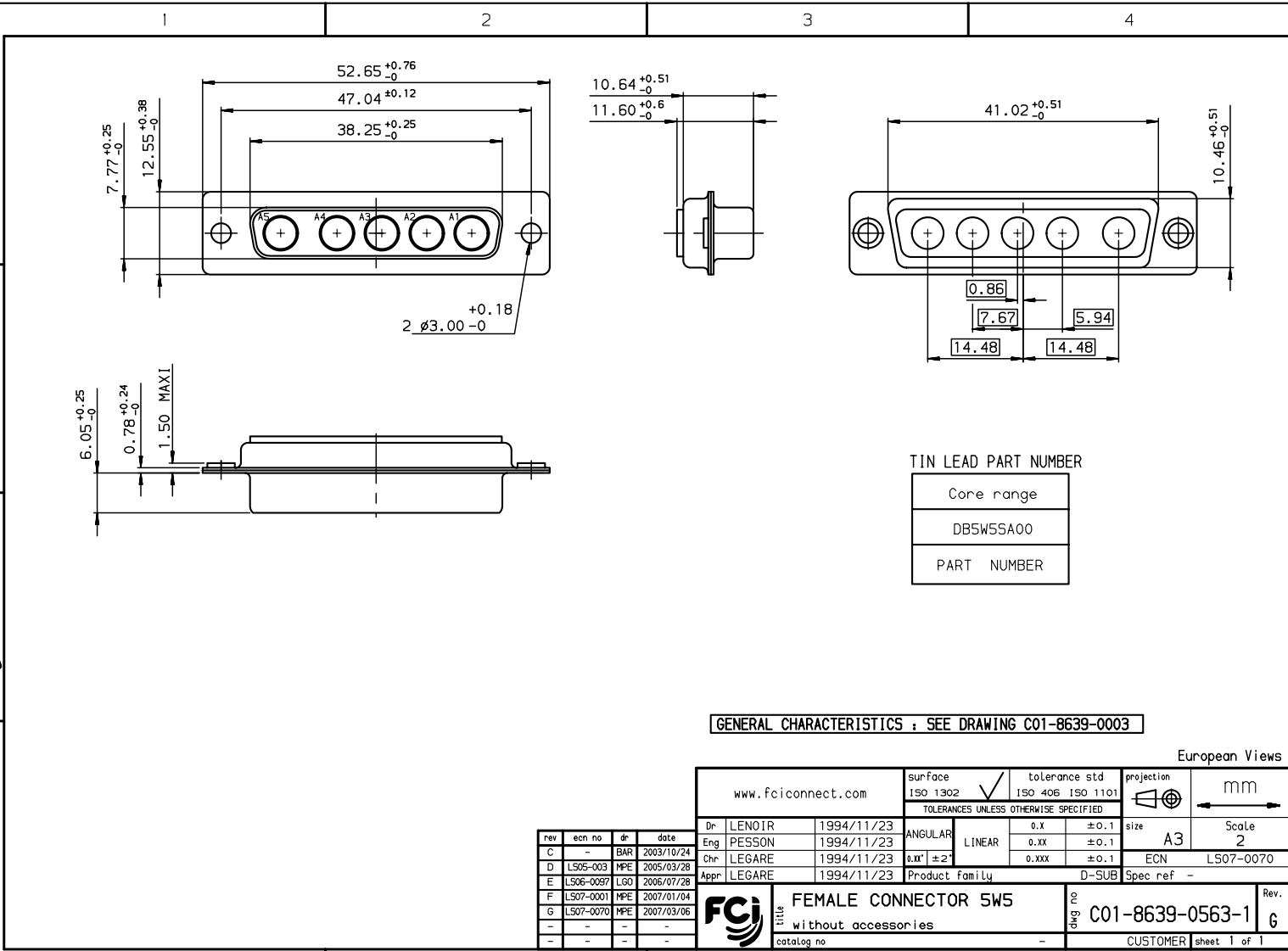


Copyright FCI.



TIN LEAD PART NUMBER
Cone range
DB5W5SA00
PART NUMBER

GENERAL CHARACTERISTICS : SEE DRAWING C01-8639-0003

European Views

www.fciconnect.com		surface ISO 1302	tolerance std ISO 406 ISO 1101	projection ISO 1101	mm
TOLERANCES UNLESS OTHERWISE SPECIFIED					
Dr	LENOIR	1994/11/23	ANGULAR	0.X	±0.1
Eng	PESSON	1994/11/23	LINEAR	0.XX	±0.1
Chr	LEGARE	1994/11/23	0.XXX	0.XXX	±0.1
Appr	LEGARE	1994/11/23	Product family D-SUB Spec ref -		
rev	ecn no	dr	date		
C	-	BAR	2003/10/24		
D	LS05-003	MPE	2005/03/28		
E	LS06-0097	LGO	2006/07/28		
F	LS07-0001	MPE	2007/01/04		
G	LS07-0070	MPE	2007/03/06		
-	-	-	-		
-	-	-	-		

Dr	LENOIR	1994/11/23	surface	ISO 1302	tolerance std	ISO 406 ISO 1101	projection	ISO 1101	mm
Eng	PESSON	1994/11/23	ANGULAR	0.X	±0.1	LINEAR	0.XX	±0.1	0.XXX
Chr	LEGARE	1994/11/23	0.XXX	0.XXX	±0.1	Product family D-SUB Spec ref -			
Appr	LEGARE	1994/11/23	Product family D-SUB Spec ref -						
www.fciconnect.com		TOLERANCES UNLESS OTHERWISE SPECIFIED		ANGULAR		LINEAR		0.XX ±0.1	
www.fciconnect.com		TOLERANCES UNLESS OTHERWISE SPECIFIED		ANGULAR		LINEAR		0.XX ±0.1	
www.fciconnect.com		TOLERANCES UNLESS OTHERWISE SPECIFIED		ANGULAR		LINEAR		0.XX ±0.1	

FCj	title	FEMALE CONNECTOR 5W5	Rev.	6
	without accessories			
	catalog no	-	part no	C01-8639-0563-1
				CUSTOMER sheet 1 of 1

REV F - 2006-04-17

PDM: Rev:G STATUS:Released Printed: Oct 01, 2010