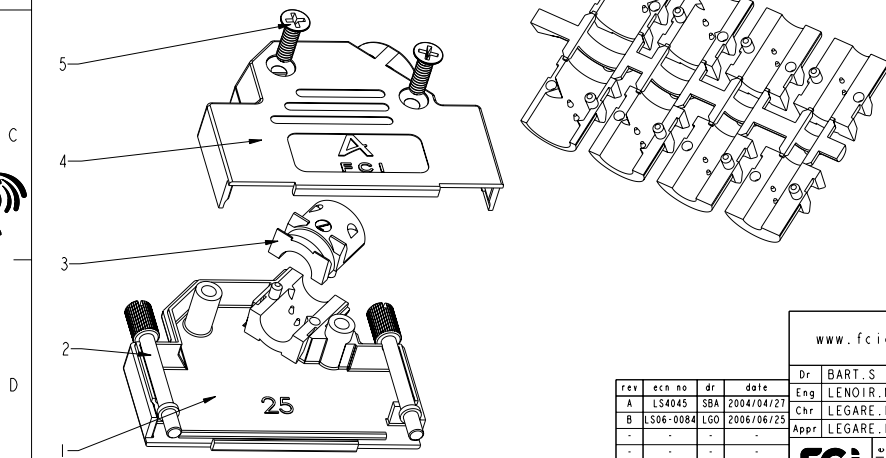
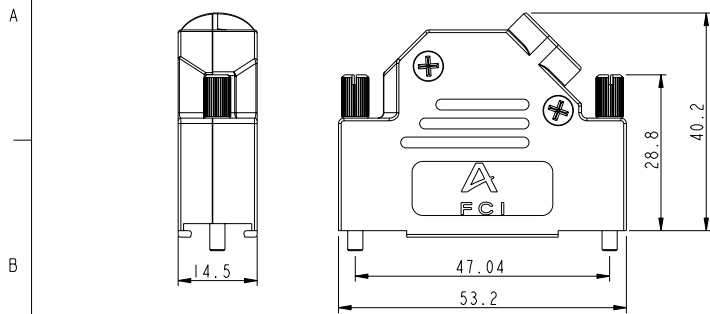


SIZE	Part Num.	Threading
25	8655MHRA2501	UNC 4.40



NOTES:

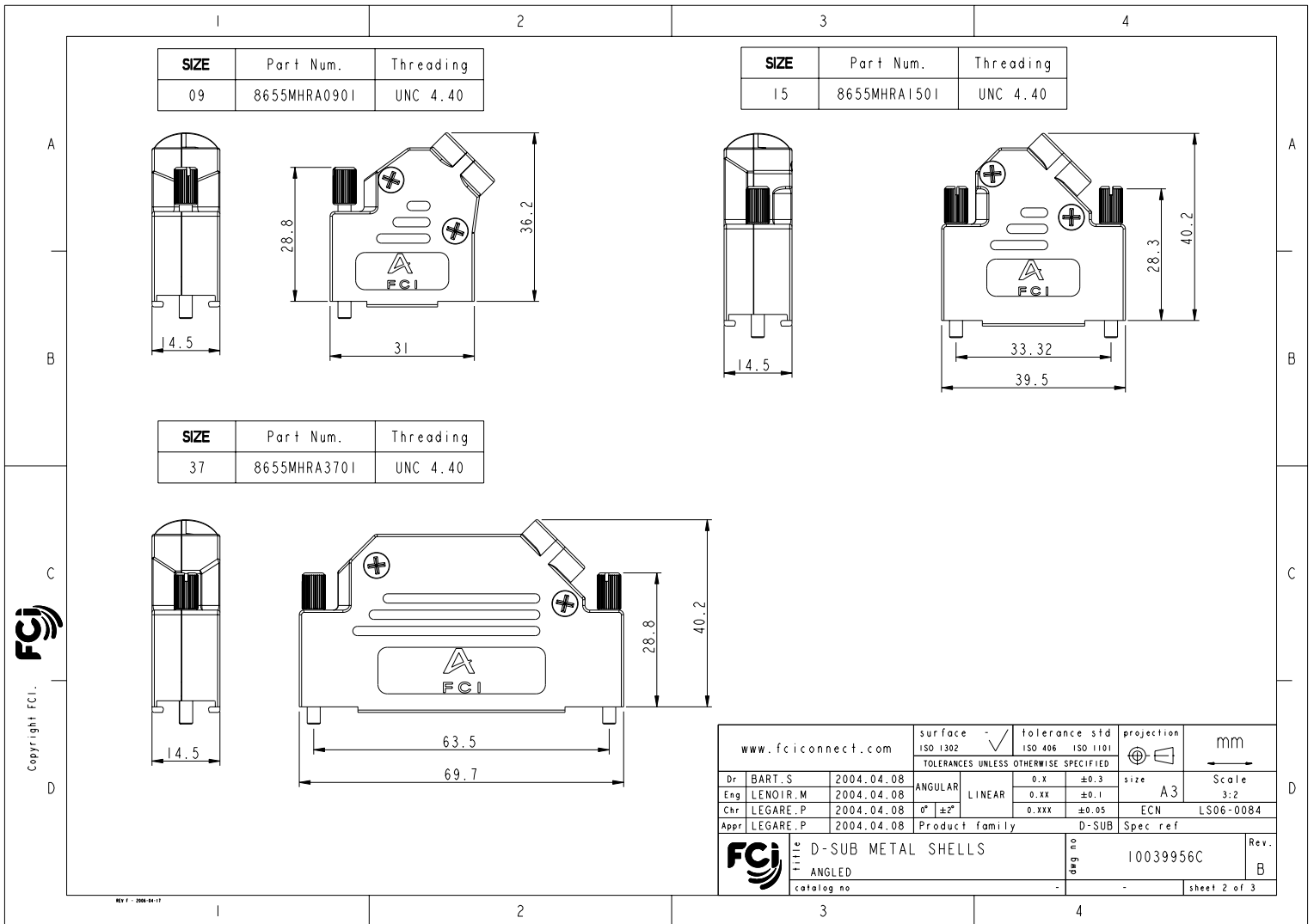
- Material and finish: Zinc die-cast nickel plated
- Cable strain relief: Steel fibre reinforced Polycarbonate (UL94V-0) for EMI/RFI screening
- Jackscrew: black UNC 4.40
- Temperature range: -40°C to 120°C
- Cable diameter: 4,0 to 13,0mm
- Attenuation factor: >40 dB between 30MHz and 1 GHz
- Packaging: Bulk, in box of 100 P/N
- Covers screwing force (max): 100Ncm
- Jackscrew screwing force (max): 75 Ncm

DESIGNATION	REP.	09	15	25	37
COVER BOTTOM	1			1	
JACKSCREW	2	1		2	
STRAIN RELIEF	3			2	
COVER TOP	4			1	
SCREW POZIDRIVE	5			2	

rev	ecn no	dr	date
A	LS4045	SBA	2004/04/27
B	LS06-0084	LGO	2006/06/25
-	-	-	-
-	-	-	-
-	-	-	-
-	-	-	-

www.fciconnect.com		surface ISO 1302	tolerance std ISO 406 ISO 1101	projection mm
		TOLERANCES UNLESS OTHERWISE SPECIFIED		mm
Dr	BART.S	2004.04.08	ANGULAR	LINEAR
Eng	LENOIR.M	2004.04.08	0.X	±0.3
Chr	LEGARE.P	2004.04.08	0.XX	±0.1
Appr	LEGARE.P	2004.04.08	0.XXX	±0.05
Product family		D-SUB		Spec ref
D-SUB METAL SHELLS		10039956C		Rev. B
ANGLED				sheet 1 of 3
catalog no				

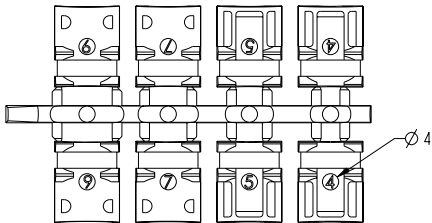
Copyright FCI



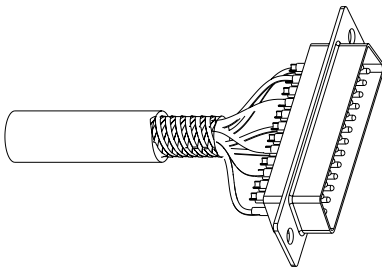
PDM: Rev:B STATUS: Released Printed: May 07, 2008

CABLING INSTRUCTIONS

1- Use two halves of strain relief, different sizes can be mixed (Ø 4, 5, 7 or 9)



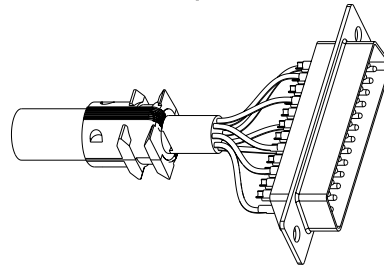
2- Strip cable 18mm and shape to two pigtails



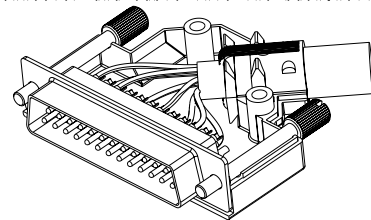
3- Attach the strain relief around the cable



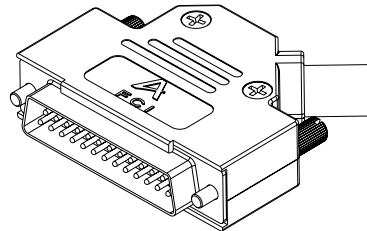
4- Bend cable shielding back on outside of strain relief



5- Mount connector and cable into the backshell



6- Assemble the other half screwing force: 100 Ncm



Copyright FCI

www.fciconnect.com		surface ISO 1302	tolerance std ISO 406 ISO 1101	projection	mm
		TOLERANCES UNLESS OTHERWISE SPECIFIED			
Dr	BART.S	2004.04.08	ANGULAR	0.X	±0.3
Eng	LENOIR.M	2004.04.08	LINEAR	0.XX	±0.1
Chr	LEGARE.P	2004.04.08	0° ±2°	0.XXX	±0.05
Appr	LEGARE.P	2004.04.08	Product family	D-SUB	Spec ref
		Title		D-SUB METAL SHELLS	
		ANGLED		10039956C	
catalog no		-		-	
		Rev.		B	
		sheet		3 of 3	