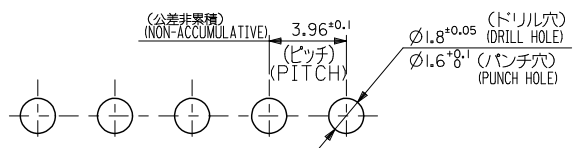
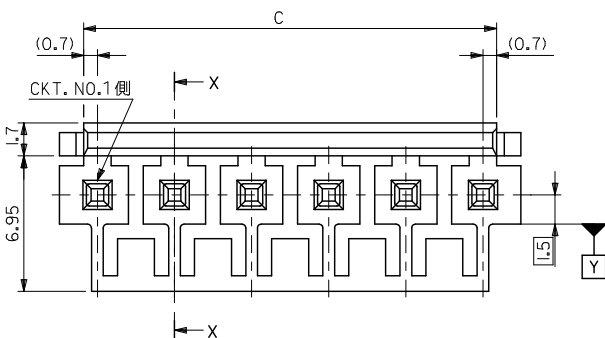


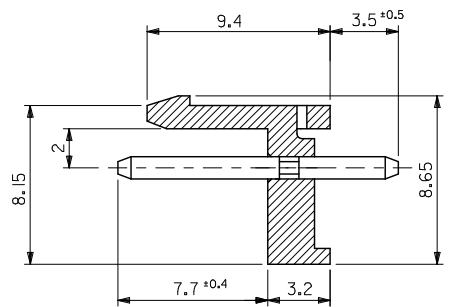
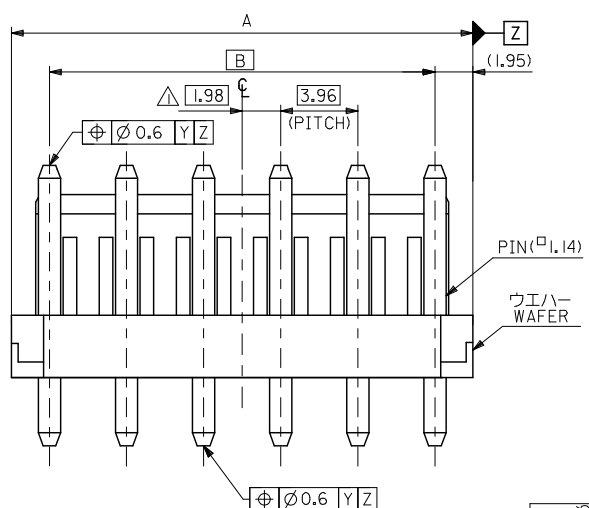
10 9 8 7 6 5 4 3 2 1



基板取付穴推奨寸法 (±1.6)
RECOMMENDED P.C. BOARD HOLE DIM.

注記
NOTES

- △ 偶数極品に適用。
APPLIES ONLY TO EVEN NO. CKT. SIZES.
- 2. 嵌合相手 : 51144 シリーズ
MATES WITH : 51144 SERIES.
- 3. 製品型番の下一桁は色を表します。
LAST DIGIT OF PART NUMBER INDICATES COLOR.
0:白 WHITE 1:黒 BLACK 2:赤 RED 3:黄 YELLOW 4:青 BLUE
5:灰 GRAY 6:緑 GREEN



断面 X-X

| | | | |
|-------|-------|--------------|----------------|
| 43.56 | 47.46 | 53520-122* | 12 |
| 39.6 | 43.5 | -112* | 11 |
| 35.64 | 39.54 | -102* | 10 |
| 31.68 | 35.58 | -092* | 9 |
| 27.72 | 31.62 | -082* | 8 |
| 23.76 | 27.66 | -072* | 7 |
| 19.8 | 23.7 | -062* | 6 |
| 15.84 | 19.74 | -052* | 5 |
| 11.88 | 15.78 | -042* | 4 |
| 7.92 | 11.82 | -032* | 3 |
| 3.96 | 7.86 | 53520-022* | 2 |
| B | A | MATERIAL NO. | 極致 NO. OF CKT. |

MODEL NO. 53520-**-2*

| | |
|----------------------|---|
| MATERIAL 材料 | ウェハ : 66NYLON WAFER UL 94V-0 ピン : リン青銅 銅下地銅メッキ PIN : PHOS.BRO. TIN OVER COPPER PLATING. |
| FINISH 仕上げ | — / — |
| WIRE RANGE 適用電線範囲 | — / — |
| INS. RANGE 被覆外径 | — / — |

| | |
|-----------------------------|-------------|
| REVISED | DESCRIPTION |
| EC NO: J2009-0347 | |
| DRW: NAKAMURA 2008/08/26 | |
| CHK: I. HARUYAMA 2008/08/26 | |
| APP: R. NIKITA 2009/01/13 | |
| REV | |

| | |
|--|-------|
| GENERAL TOLERANCES (UNLESS SPECIFIED) | |
| 10 UNDER | ±0.2 |
| 10 OVER 30 UNDER | ±0.25 |
| 30 OVER | ±0.3 |
| ANGULAR | ±3 ° |
| DRAFT WHERE APPLICABLE MUST REMAIN WITHIN DIMENSIONS | |

| | |
|------------------------|---------------------------------------|
| DIMENSION STYLE | MM ONLY |
| SCALE | 5:1 |
| DESIGN UNITS | METRIC |
| THIRD ANGLE PROJECTION | |
| DRAWN BY | A. IDA |
| DATE | 2004/04/16 |
| CHECKED BY | H. TAKASE |
| DATE | 2004/04/16 |
| APPROVED BY | J. MIYAZAWA |
| DATE | 2004/04/16 |
| MATERIAL NO. | SEE TABLE |
| TITLE | 3.96 WAFER ASSY WITH LOCK -LEAD FREE- |
| DOCUMENT NO. | SD-53520-001 |
| SHEET NO. | 1 OF 2 |

10 9 8 7 6 5 4 3 2 1

| | | | | | | | |
|-----------------------------|----------------------------|----------------------------|------------------------------|---------------------------|-----------------------------|-----------------------------|-----------------------|
| | | | | | | 53520-1220 | 12 |
| | | | | | | 53520-1120 | 11 |
| | | | | | | 53520-1020 | 10 |
| | | | | | | 53520-0920 | 9 |
| | | | 53520-0823 | 53520-0822 | | 53520-0820 | 8 |
| | | | | | | 53520-0720 | 7 |
| | | | | | | 53520-0620 | 6 |
| 53520-0526 | | | | | | 53520-0520 | 5 |
| 53520-0426 | | 53520-0424 | 53520-0423 | 53520-0422 | | 53520-0420 | 4 |
| | | | 53520-0323 | | 53520-0321 | 53520-0320 | 3 |
| 53520-0226 | 53520-0225 | 53520-0224 | 53520-0223 | 53520-0222 | 53520-0221 | 53520-0220 | 2 |
| 53520-**26 COLOR : GREEN | 53520-**25 COLOR : GRAY | 53520-**24 COLOR : BLUE | 53520-**23 COLOR : YELLOW | 53520-**22 COLOR : RED | 53521-**21 COLOR : BLACK | 53520-**20 COLOR : WHITE | 種数 NO. OF CKTS. |

MATERIAL NO.

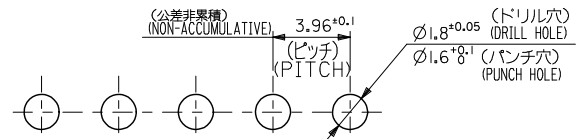
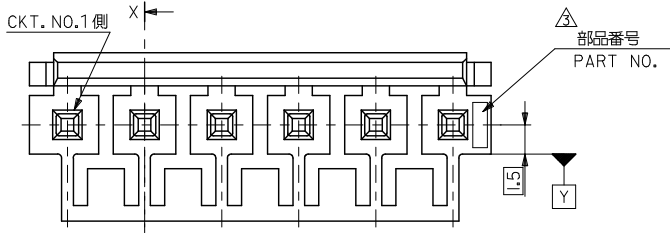
MODEL NO. 53520-**2*

| | | | | | | | | |
|--|---------------------------------------|---------------------------|---|--------------------|--|------------------------|------------------------|--|
| REVISED E.C. NO: J2009-0347 DRAWN BY: DR. WAKAMURA 2008/08/26 CHECKED BY: HARUYAMA 2008/08/26 APPROVED BY: HARUYAMA 2009/01/13 | GENERAL TOLERANCES (UNLESS SPECIFIED) | | DIMENSION STYLE MM ONLY | | SCALE 5:1 | DESIGN UNITS METRIC | THIRD ANGLE PROJECTION | |
| | 10 UNDER | ±0.2 | DRAWN BY A. IDA | DATE 2004/04/16 | TITLE 3.96 WAFER ASSY WITH LOCK -LEAD FREE- | | | |
| | 10 OVER 30 UNDER | ±0.25 | CHECKED BY H. TAKASE | DATE 2004/04/16 | | | | |
| | 30 OVER | ±0.3 | APPROVED BY J. MIYAZAWA | DATE 2004/04/16 | MOLEX INCORPORATED DOCUMENT NO. SD-53520-001 SHEET NO. 2 OF 2 | | | |
| ANGULAR | ±3 ° | MATERIAL NO. SEE TABLE | | | | | | |
| DRAFT WHERE APPLICABLE MUST REMAIN WITHIN DIMENSIONS | | | SIZE A3 THIS DRAWING CONTAINS INFORMATION THAT IS PROPRIETARY TO MOLEX INCORPORATED AND SHOULD NOT BE USED WITHOUT WRITTEN PERMISSION | | | | | |

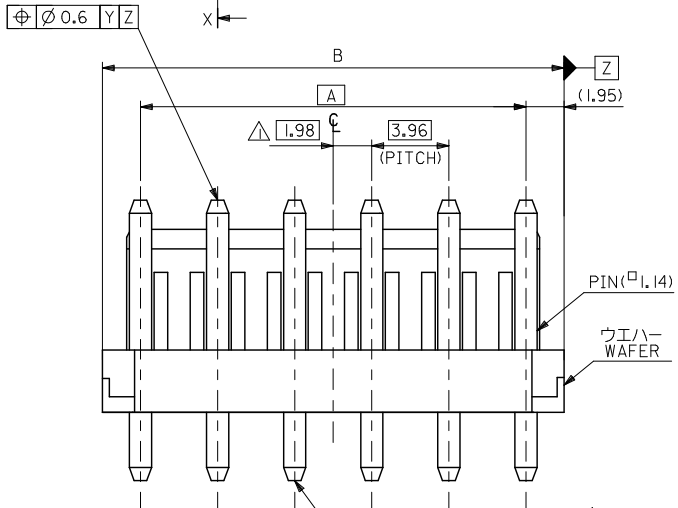
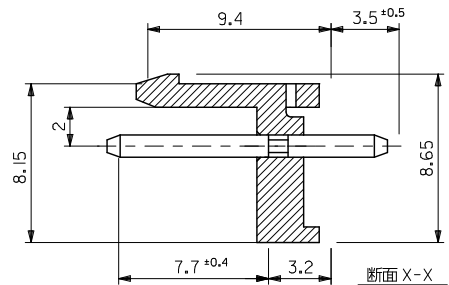
ib_frame_A3_J_ME_S
Rev. E 2006/04/15

9 8 7 6 5 4 3 2 EN-02JA(021)

10 9 8 7 6 5 4 3 2 1

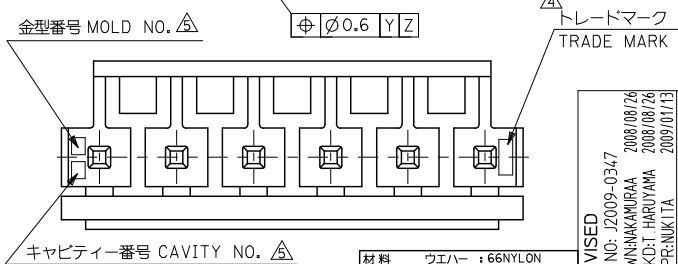


基板取付穴推奨寸法 (±1.6)
RECOMMENDED P.C.BOARD HOLE DIM.



- 注記 NOTES
- △ 偶数極品に適用。 APPLIES ONLY TO EVEN NO. CKT. SIZES.
 - 2. 嵌合相手: 51144 シリウス MATES WITH: 51144 SERIES.
 - △ 53520と表示。 INDICATE 53520.
 - △ MXプラス1文字のアルファベットで構成。(例 MXJ) FORMED BY MX AND 1 MORE LETTER OF ALPHABET. (e.g. MXJ)
 - △ キャビティー番号: 1桁~2桁の数字で構成。(例 A1, B12) 金型番号: アルファベット1文字で構成。 CAVITY NO.: FORMED BY 1 DIGIT TO 2 DIGIT NUMBERS. MOLD NO.: FORMED BY 1 LETTER OF ALPHABET. (e.g. A1, B12)

| | | | |
|-------|-------|--------------|----------------|
| 47.46 | 43.56 | 53520-1220 | 12 |
| 43.5 | 39.6 | -1120 | 11 |
| 39.54 | 35.64 | -1020 | 10 |
| 35.58 | 31.68 | -0920 | 9 |
| 31.62 | 27.72 | -0820 | 8 |
| 27.66 | 23.76 | -0720 | 7 |
| 23.7 | 19.8 | -0620 | 6 |
| 19.74 | 15.84 | -0520 | 5 |
| 15.78 | 11.88 | -0420 | 4 |
| 11.82 | 7.92 | -0320 | 3 |
| 7.86 | 3.96 | 53520-0220 | 2 |
| B | A | MATERIAL NO. | 極品 NO. OF CKTS |



材料 ウエハー: 66NYLON MATERIAL WAFER UL94V-0
ピン: リン青銅, 銅下地銅メッキ PIN: PHOS.BRO. TIN OVER COPPER PLATING.

| | | | | | |
|--|--|-----------------------------|--|------------------------------|------------------------|
| REVISED EC NO: J2009-0347 B DRYNAKAWA 2008/08/26 CHYKAI HARUYAMA 2008/08/26 APPR:NIKIITA 2009/01/13 | GENERAL TOLERANCES (UNLESS SPECIFIED) | DIMENSION STYLE MM ONLY | SCALE 5:1 | DESIGN UNITS METRIC | THIRD ANGLE PROJECTION |
| | 10 UNDER ±0.2 | DRAWN BY Y. MIZUNO | DATE '97/7/15 | TITLE 3.96 WAFER W/LOCK | |
| | 10 OVER 30 UNDER ±0.25 | CHECKED BY Y. MIZUNO | DATE '97/7/30 | MOLEX INCORPORATED | |
| | 30 OVER ±0.3 | APPROVED BY M. FUKUSHIMA | DATE '97/7/30 | DOCUMENT NO. SD-53520-003 | SHEET NO. 1 OF 1 |
| DESCRIPTION ANGULAR ±3 ° | DRAFT WHERE APPLICABLE MUST REMAIN WITHIN DIMENSIONS | MATERIAL NO. SEE TABLE | SIZE A3 THIS DRAWING CONTAINS INFORMATION THAT IS PROPRIETARY TO MOLEX INCORPORATED AND SHOULD NOT BE USED WITHOUT WRITTEN PERMISSION | | |