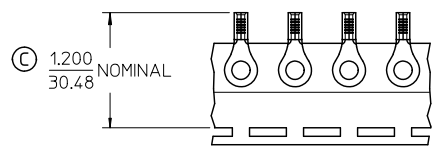
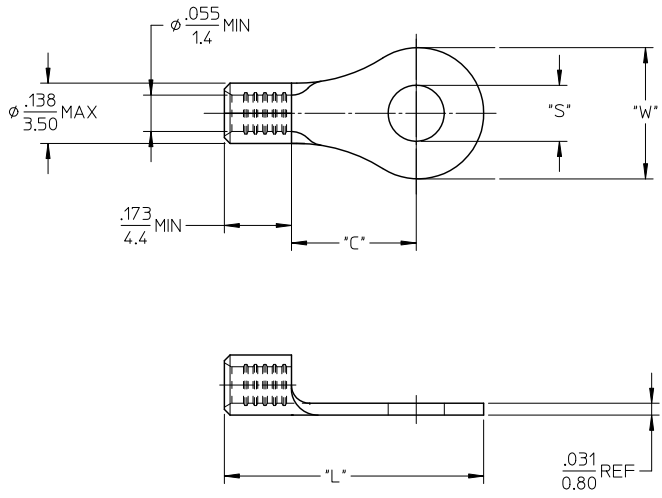


LOOSE PIECE		TAPE MOUNTED		STUD SIZE	DIMENSIONS			
MATERIAL NO.	ENG. NO.	MATERIAL NO.	ENG. NO.		"S"±.007/0.18	"W" MAX	"C" MIN	"L" MAX
192030486	A-S-122-14	192030005	A-S-122-14T	1/4"	.256/6.50	.467/11.86	.427/10.85	.894/22.71
192030483	A-S-132-06	192030011	A-S-132-06T	06	.146/3.71	.270/6.86	.238/6.05	.611/15.52
192030485	A-S-132-08	192030014	A-S-132-08T	08	.169/4.29	.270/6.86	.238/6.05	.611/15.52
192030387	A-S-133-10	192030016	A-S-133-10T	10	.209/5.31	.325/8.26	.270/6.86	.666/16.92

Ⓒ



PARTS ON TAPE

- NOTE(S):
1. MATERIAL: STEEL
 2. WIRE SIZE: 22-18 AWG (0.25-1.5 MM²)
 3. FINISH: NICKEL PLATING
 4. PARTS ARE ROHS COMPLIANT.
 5. AMBIENT OPERATING TEMPERATURE UP TO 900 °F (483 °C).

TAPE HT. CONSOL P/NS EC NO: WNA2010-0619 DRW: HETHRODAHL 2010/04/23 CHKD: JMACNEIL 2010/04/23 APPR: JMACNEIL 2010/06/01	QUALITY SYMBOLS	GENERAL TOLERANCES (UNLESS SPECIFIED) 4 PLACES ± --- ± --- 3 PLACES ± --- ± --- 2 PLACES ± --- ± --- 1 PLACE ± --- ± --- ANGULAR ± ---°	DIMENSION STYLE	SCALE	DESIGN UNITS	THIRD ANGLE PROJECTION
	▽=0 ▽=0		IN/MM	4:1	INCH	
	DRAWN BY EHILE 2006/09/22		DATE	TITLE		
	CHECKED BY JMACNEIL 2006/09/22		DATE	RING TONGUE TERMINAL, 22-18 AWG, KRIMP TITE, 900 DEG F (483 DEG C)		
APPROVED BY JMACNEIL 2006/09/22	DATE	MOLEX INCORPORATED	MATERIAL NO. SEE CHART	DOCUMENT NO. SD-19203-036	SHEET NO. 1 OF 1	
REV C	DRAFT WHERE APPLICABLE MUST REMAIN WITHIN DIMENSIONS	SIZE B	THIS DRAWING CONTAINS INFORMATION THAT IS PROPRIETARY TO MOLEX INCORPORATED AND SHOULD NOT BE USED WITHOUT WRITTEN PERMISSION			