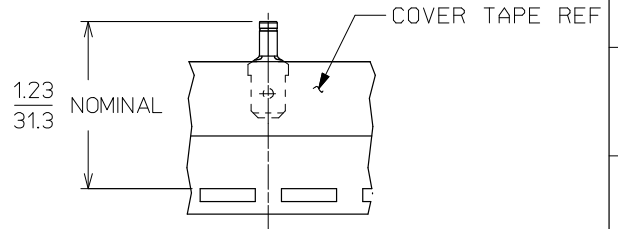
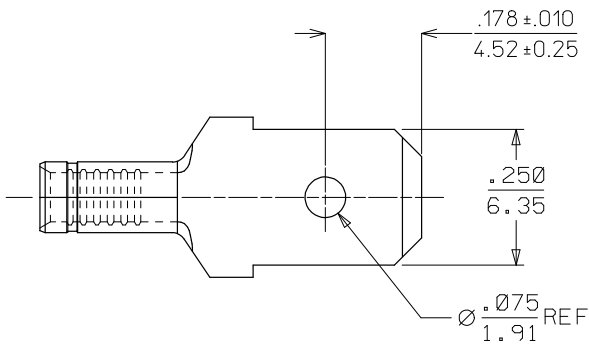
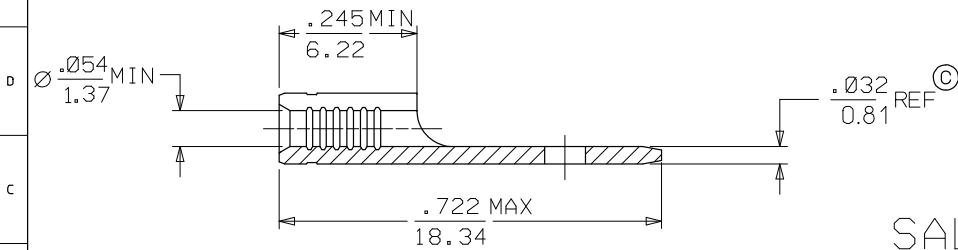


	13	12	11	10	9	8	7	6	5	4	3	2	1	
J	MATERIAL NUMBER	ENGINEERING NUMBER	DESCRIPTION											J
	I90220004	AMCT-I	ZINC CHROMATE PLATED											
	I90220010	AMCT-IT	ZINC CHROMATE PLATED, TAPE MOUNTED											



TAPE MOUNTING LOCATION FOR 190220010, AMCT-1T



SALES DRAWING

NOTES:

1. MATERIAL: BRASS ©
2. FINISH: SEE CHART
3. WIRE SIZE: 22-18 AWG (0.38 - 0.96 mm²)
4. TAB DIMENSIONS CONFORM TO UL310 SPECIFICATIONS.
5. PART IS ROHS COMPLIANT. ©

CHANGED MATL & FINISH EC NO: ETC2007-0081 DRAWN BY: DRW:HEHLE 2008/01/28 CHKD: JMA:NEIL 2008/01/28 APPR: JMA:NEIL 2008/02/13	QUALITY SYMBOLS ▼=0 ▽=0	GENERAL TOLERANCES (UNLESS SPECIFIED):		DIMENSION STYLE	SCALE	DESIGN UNITS	THIRD ANGLE PROJECTION	
		mm	INCH	IN/MM	4:1	INCH	☉	
		4 PLACES ± --- ± ---		DRAWN BY	DATE	TITLE		
		3 PLACES ± --- ± .005		BRE	1/07/02	MALE CONNECTOR TERMINAL		
2 PLACES ± 0.13 ± .01		CHECKED BY	DATE	.250 X .032 TAB				
1 PLACE ± 0.25 ± ---		HEB	1/07/02	KRIMP TITE				
ANGULAR ± 1/2°		APPROVED BY	DATE	MOLEX INCORPORATED				
		RWD	1/07/02					
DRAFT WHERE APPLICABLE MUST REMAIN WITHIN DIMENSIONS		MATERIAL NO.	DOCUMENT NO.	SHEET NO.				
		SEE CHART	SD-19022-006	1 OF 1				
		THIS DRAWING CONTAINS INFORMATION THAT IS PROPRIETARY TO MOLEX INCORPORATED AND SHOULD NOT BE USED WITHOUT WRITTEN PERMISSION						

Ib_frame_C_P_ME_T
Rev. D 2004/04/02

	12	11	10	9	8	7	6	5	4	3	2	1	
--	----	----	----	---	---	---	---	---	---	---	---	---	--