

	Document Type: Technical data sheet [page 1 of 2]	-
Product Code: FLEX113	Product Name: FLEX Mini Kit	Current version & Author: v1 (02.04.2010) - Shiva

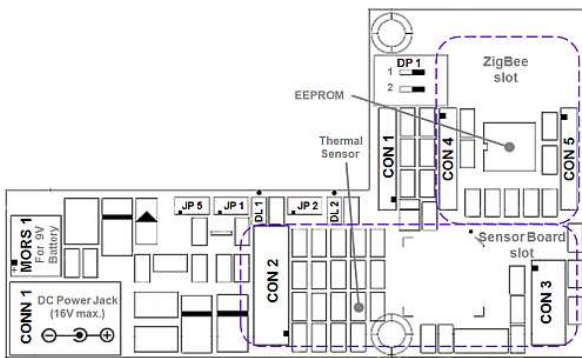


Figure 1: FLEX Mini Kit Base Board

ZigBee Connector [CON4 + CON5]			
CON4		CON5	
Pin 1	GND	Pin 1	GND
Pin 2	RADIO <sub>RESET</sub>	Pin 2	GND
Pin 3	RADIO <sub>WAKE</sub>	Pin 3	+3.3V
Pin 4	RADIO <sub>INT</sub>	Pin 4	-
Pin 5	RADIO <sub>SDI</sub>	Pin 5	RADIO <sub>CS</sub>
Pin 6	RADIO <sub>SCK</sub>	Pin 6	RADIO <sub>SDO</sub>

Battery Connector [MORS1]	
Pin 1	+9V (Battery)
Pin 2	GND <sub>IN</sub>

DIP Switches [DP1]			
No.	Pin	ON	OFF
1	PGC1	+3.3V	GND
2	PGD1	+3.3V	GND

Note: Default positions are indicated with grey background

LEDs	
DL1 (green)	+3.3V (Power on Board)
DL2 (yellow)	LEDSYS (System)

Jumper	pos. 1-2	pos. 2-3
Power LED [JP1]	GND <sub>IN</sub>	-
System LED [JP2]	GND	-
Ground Ring [JP3]	GND	-

Note: Default jumper settings are indicated with grey background

PICkit Programming Connector [CON1]	
Pin 1	MCLR
Pin 2	+3.3V
Pin 3	GND
Pin 4	PGD1
Pin 5	PGC1
Pin 6	-

	Document Type: Technical data sheet [page 2 of 2]	-
Product Code: FLEX113	Product Name: FLEX Mini Kit	Current version & Author: v1 (02.04.2010) - Shiva

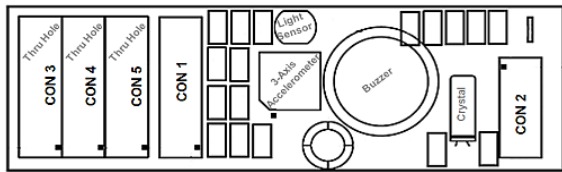


Figure 2: FLEX Mini Kit Sensor Board

Plug-in Connector [CON1]			
Pin 1	+V <sub>IN</sub>	Pin 2	RB15
Pin 3	LEDSYS	Pin 4	RB14
Pin 5	RB13	Pin 6	GND <sub>IN</sub>
Pin 7	RC9	Pin 8	RB10
Pin 9	RC8	Pin 10	RB11
Pin 11	+3.3V	Pin 12	RB12
Pin 13	GND	Pin 14	GND

Plug-in Connector [CON2]			
Pin 1	+3.3V	Pin 2	GND
Pin 3	RA9	Pin 4	RB9
Pin 5	SOSCO	Pin 6	RB8
Pin 7	SOSCI	Pin 8	RB5
Pin 9	GND	Pin 10	RB6

### Thru Hole:

- CON3, CON4 and CON5 are thru hole (7 holes x 2 rows = 14 pins)
- CON5 thru hole is connected to CON1 and CON2

Thru Hole [CON5]			
Pin 1	LEDSYS	Pin 2	+V <sub>IN</sub>
Pin 3	RA9	Pin 4	GND <sub>IN</sub>
Pin 5	RB10	Pin 6	-
Pin 7	RC9	Pin 8	-
Pin 9	RB11	Pin 10	-
Pin 11	RC8	Pin 12	-
Pin 13	+3.3V	Pin 14	GND

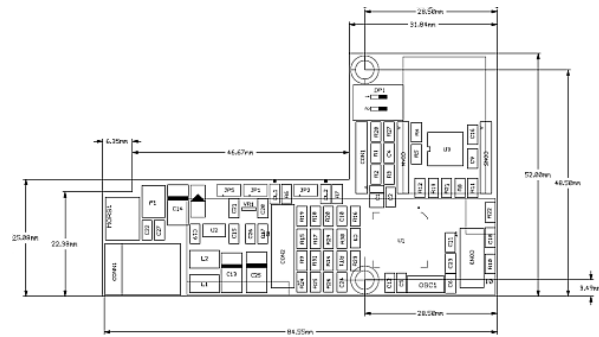


Figure 3: FLEX Mini Kit Base Board Dimensions