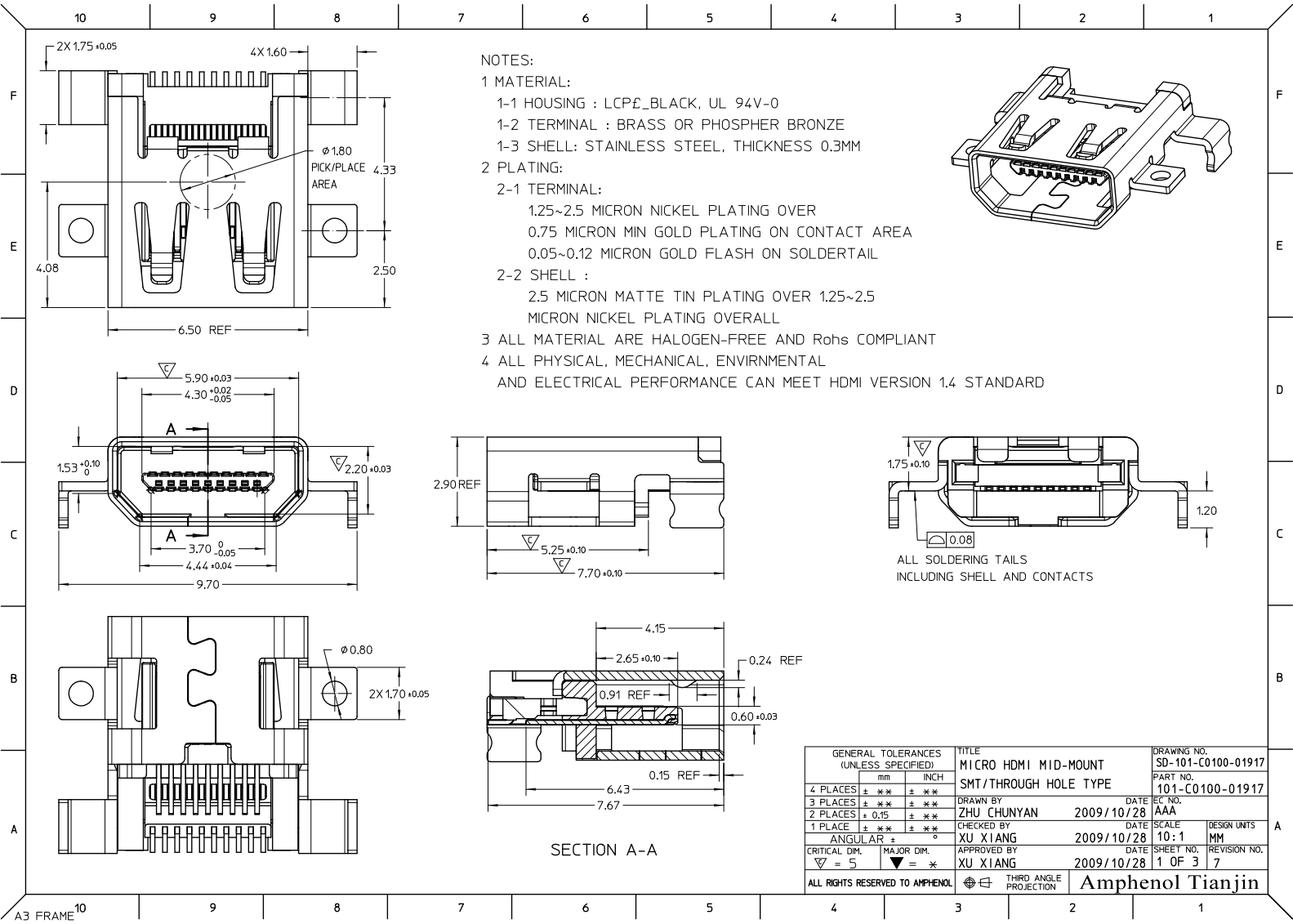


CENTER LINE OF
CONNECTOR AND PCB

CONNECTOR OVER-LAYED ON THE PCB

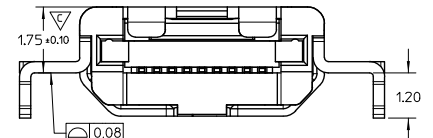
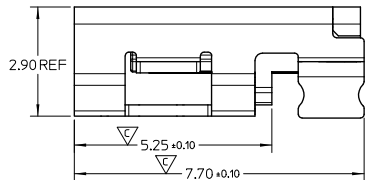
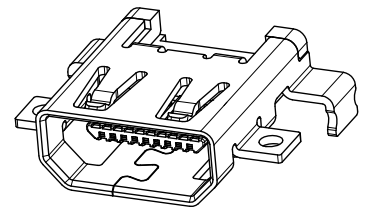
REV. NO.	CHANGE DESCRIPTION
	CHANGE HISTORY

GENERAL TOLERANCES (UNLESS SPECIFIED)		TITLE		DRAWING NO.	
	mm	MICRO HDMI MID-MOUNT		SD-101-C0100-01917	
4 PLACES	± 0.10	SMT/THROUGH HOLE TYPE		PART NO.	
3 PLACES	± 0.15	DRAWN BY		101-C0100-01917	
2 PLACES	± 0.20	ZHU CHUNYAN		EC NO.	
1 PLACE	± 0.30	DATE		AAA	
		XU XIANG		SCALE	
		2009/10/28		20/1	
		XU XIANG		DESIGN UNITS	
		2009/10/28		MM	
		XU XIANG		SHEET NO.	
		2009/10/28		3 OF 3	
		XU XIANG		REVISION NO.	
		2009/10/28		7	
ALL RIGHTS RESERVED TO AMPHENOL		THIRD ANGLE PROJECTION		Amphenol Tianjin	

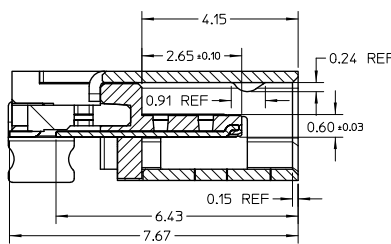


NOTES:

- 1 MATERIAL:
 - 1-1 HOUSING : LCP_E_BLACK, UL 94V-0
 - 1-2 TERMINAL : BRASS OR PHOSPHOR BRONZE
 - 1-3 SHELL: STAINLESS STEEL, THICKNESS 0.3MM
- 2 PLATING:
 - 2-1 TERMINAL:
 - 1.25~2.5 MICRON NICKEL PLATING OVER
 - 0.75 MICRON MIN GOLD PLATING ON CONTACT AREA
 - 0.05~0.12 MICRON GOLD FLASH ON SOLDER TAIL
 - 2-2 SHELL :
 - 2.5 MICRON MATTE TIN PLATING OVER 1.25~2.5 MICRON NICKEL PLATING OVERALL
- 3 ALL MATERIAL ARE HALOGEN-FREE AND Rohs COMPLIANT
- 4 ALL PHYSICAL, MECHANICAL, ENVIRONMENTAL AND ELECTRICAL PERFORMANCE CAN MEET HDMI VERSION 1.4 STANDARD

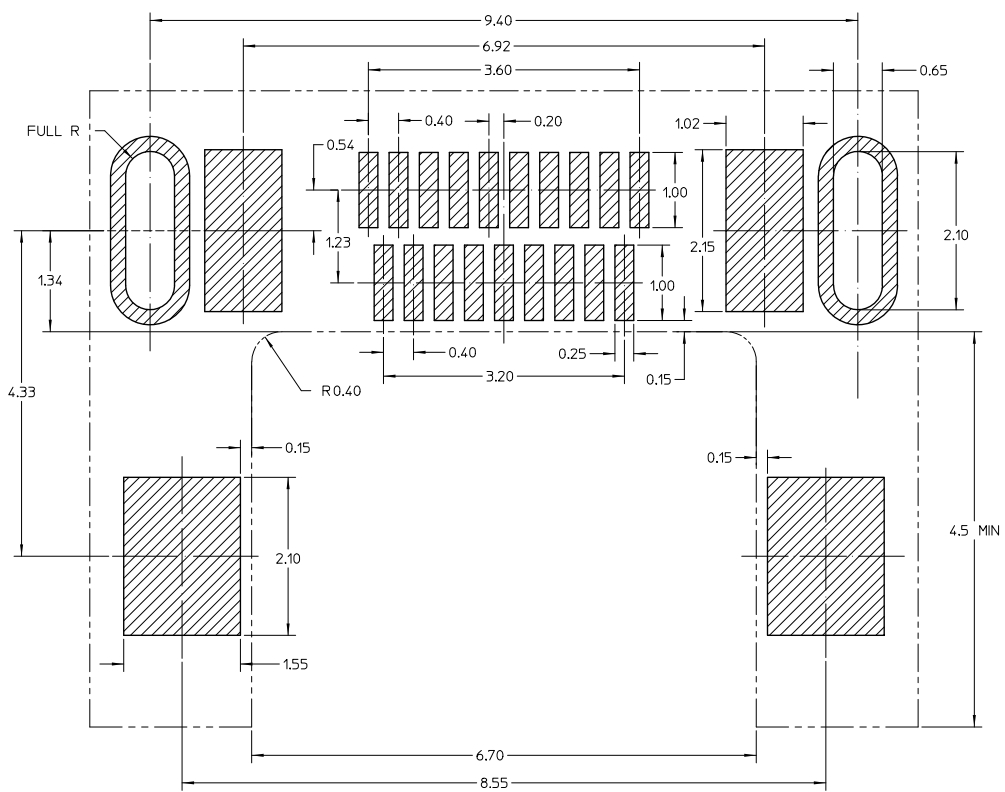


ALL SOLDERING TAILS INCLUDING SHELL AND CONTACTS



SECTION A-A

GENERAL TOLERANCES (UNLESS SPECIFIED)		TITLE		DRAWING NO.	
	mm	MICRO HDMI MID-MOUNT		SD-101-C0100-01917	
4 PLACES	± 0.15	SMT/THROUGH HOLE TYPE		PART NO.	
3 PLACES	± 0.15	DRAWN BY		101-C0100-01917	
2 PLACES	± 0.15	ZHU CHUNYAN		DATE	
1 PLACE	± 0.15	XU XIANG		2009/10/28	
ANGULAR	± 0.5	CHECKED BY		SCALE	
CRITICAL DIM.	▽ = 5	XU XIANG		10:1	
MAJOR DIM.	▽ = *	APPROVED BY		DESIGN UNITS	
		XU XIANG		MM	
ALL RIGHTS RESERVED TO AMPHENOL		THIRD ANGLE PROJECTION		SHEET NO.	
		Amphenol Tianjin		1 OF 3	
				REVISION NO.	
				7	



RECOMMENDED PCB LAYOUT (COMPONENTS SIDE)
ALL DIMENSION TOLERANCE ± 0.05

REV. NO.	CHANGE DESCRIPTION
***	***
CHANGE HISTORY	

GENERAL TOLERANCES (UNLESS SPECIFIED)		TITLE		DRAWING NO.	
mm	INCH	MICRO HDMI MID-MOUNT		SD-101-C0100-01917	
4 PLACES ± 0.10	± 0.004	SMT/THROUGH HOLE TYPE		PART NO. 101-C0100-01917	
3 PLACES ± 0.15	± 0.006	DRAWN BY	DATE	EC NO.	SCALE
2 PLACES ± 0.20	± 0.008	ZHU CHUNYAN	2009/10/28	AAA	20/1
1 PLACE ± 0.25	± 0.010	CHECKED BY	DATE	DESIGN UNITS	MM
		XU XIANG	2009/10/28		
		APPROVED BY	DATE	SHEET NO.	REVISION NO.
		XU XIANG	2009/10/28	2 OF 3	7
ANGULAR ± 0.10		THIRD ANGLE PROJECTION		Amphenol Tianjin	
CRITICAL DIM. $\nabla = \times$					
MAJOR DIM. $\blacktriangledown = \times$					
ALL RIGHTS RESERVED TO AMPHENOL					