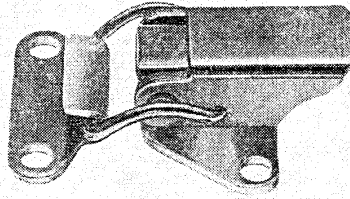


**TL803B
TL804B**



78

A miniature latch, with two fixing holes, for lightly loaded application. The TL803B offers the same spring tension feature as the bigger TL800B latch, and as the TL803B is of neat, compact appearance, it is suitable in some cases as a decorative latch.

The TL800-7 strike is shown above but other strikes are available.

TL804B. Identical to the TL803B except that the base of the latch is plain, unplated without holes, for welding. Used with TL804-2 strike. Technical data remains as the TL803B.

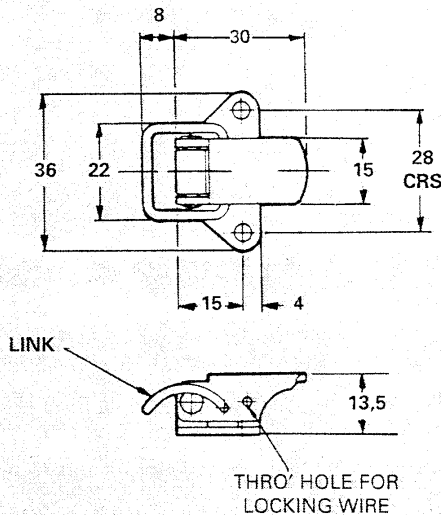
INSTALLATION DATA

Latches and strikes may be fitted with either 4mm dia round head rivets #6 Unified round head screws or #6 round head woodscrews. Fixing holes on latches and strikes are 4,15mm dia. Posn. Tol ± 0.25 mm.

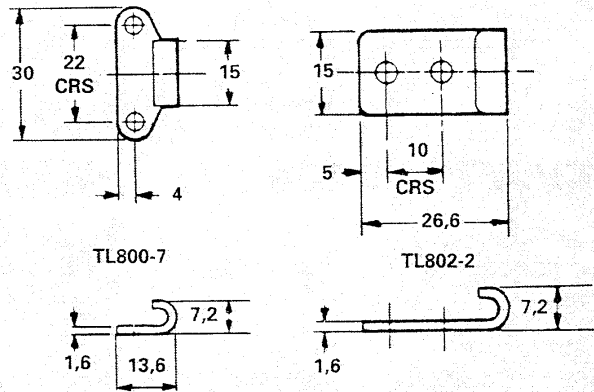
TECHNICAL DATA

Overall length (latch only) : 38mm
 Overall width : 36mm
 Strength:
 Max. safe load without distortion : 200N (45lbf)
 Ultimate tension : 979N (220lbf)
 Pull up : 5mm
 Materials Cold rolled steel or stainless steel
 Finishes Zinc Plate and Passivate to BS1706 : Zn3
 (C.R. steel Chromium plate only)
 Black Zinc
 Bright Zinc

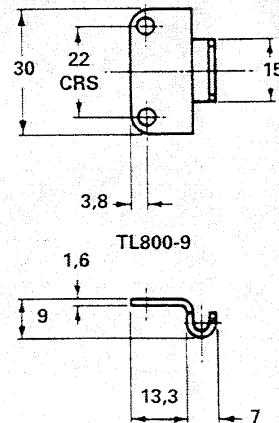
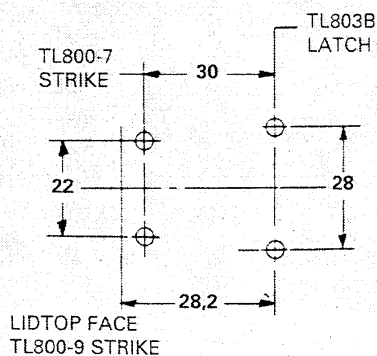
LATCH TL803B



STRIKES see also page 88



TYPICAL INSTALLATION DIAGRAM



Finish Codes see page 75