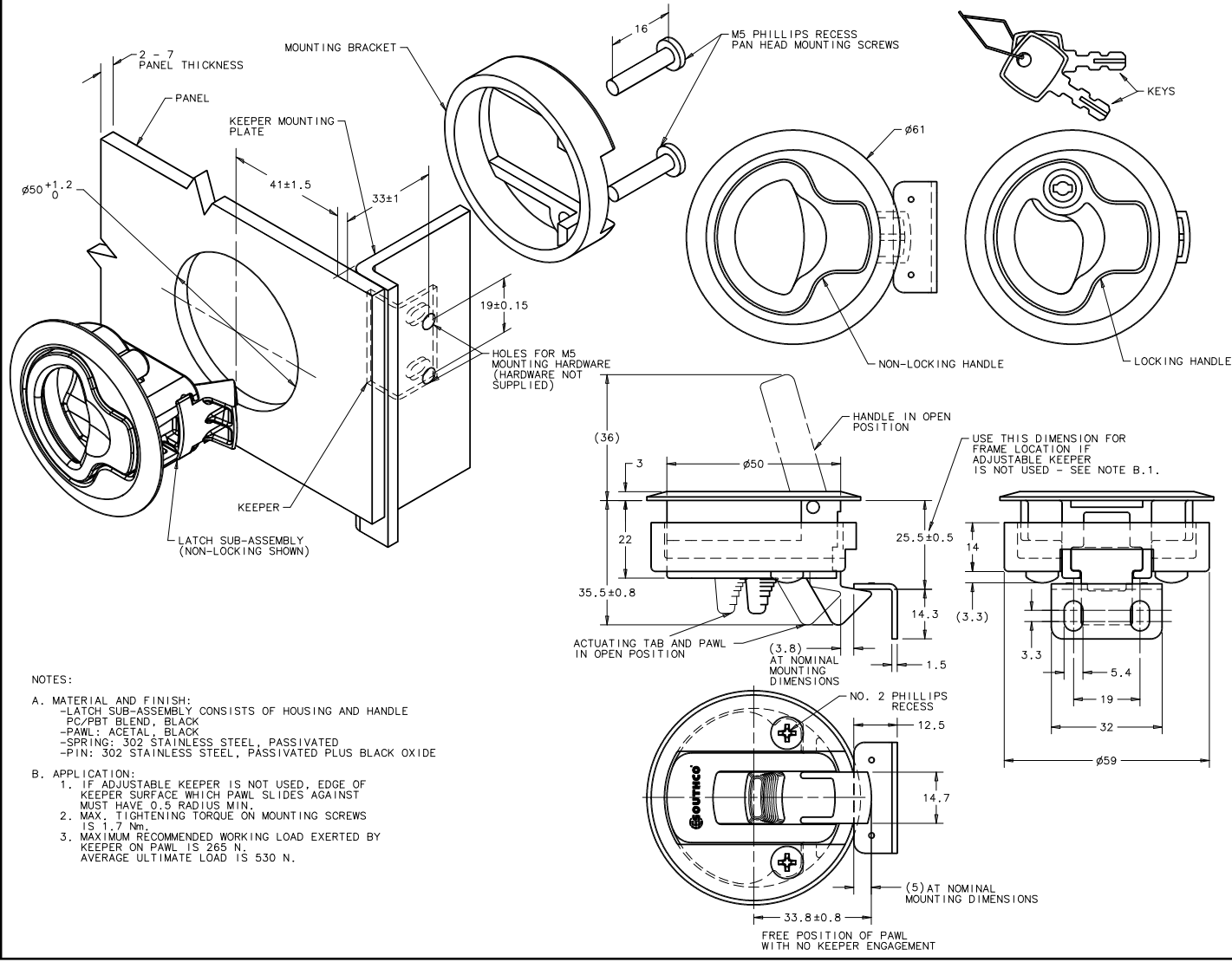


southco <small>PROPRIETARY ITEM - EXCEPT FOR USES EXPRESSLY PERMITTED IN WRITING, ALL RIGHTS ARE RESERVED BY SOUTHCO, INC.</small>	DATE	31/AUG/92	DATE	31/AUG/92	DATE	31/AUG/92
	REV	1	REV	1	REV	1
DRAWING NUMBER J-M1-61	DRAWING SCALE 1:1	FINISH SEE NOTE A	REMARKS NON-LOCKABLE	MILLIMETERS <small>DIMENSIONAL TOLERANCE UNLESS OTHERWISE NOTED 0.25</small>	PART NUMBER M1-61	MATERIAL 304 STAINLESS STEEL, PASSIVATED
SOUTHCO FLUSH-PULL LATCH METRIC ASSEMBLY	LOCKABLE NON-LOCKABLE	SEE NOTE A BLACK	SEE NOTE A BLACK	SEE NOTE A BLACK	LATCH SUB-ASSEMBLY PC/PBT BLEND	MOUNTING BRACKET 300 SERIES STAINLESS STEEL, PASSIVATED
ITEM DESCRIPTION FLUSH-PULL LATCH	ASSEMBLY ASSEMBLY	SEE NOTE A BLACK	SEE NOTE A BLACK	SEE NOTE A BLACK	LATCH SUB-ASSEMBLY PC/PBT BLEND	MOUNTING BRACKET 300 SERIES STAINLESS STEEL, PASSIVATED
SUB-ASSEMBLY FLUSH-PULL LATCH	PART NUMBER M1-61	SEE NOTE A BLACK	SEE NOTE A BLACK	SEE NOTE A BLACK	LATCH SUB-ASSEMBLY PC/PBT BLEND	MOUNTING BRACKET 300 SERIES STAINLESS STEEL, PASSIVATED
DATE 11/24/92	DATE 11/24/92	DATE 11/24/92	DATE 11/24/92	DATE 11/24/92	DATE 11/24/92	DATE 11/24/92



NOTES:
 A. MATERIAL AND FINISH:
 - LATCH SUB-ASSEMBLY CONSISTS OF HOUSING AND HANDLE
 - PC/PBT BLEND, BLACK
 - PAWL: ACETAL, BLACK
 - SPRING: 302 STAINLESS STEEL, PASSIVATED
 - PIN: 302 STAINLESS STEEL, PASSIVATED PLUS BLACK OXIDE
 B. APPLICATION:
 1. IF ADJUSTABLE KEYPER IS NOT USED, EDGE OF KEYPER SURFACE WHICH PAWL SLIDES AGAINST MUST HAVE 0.5 RADIUS MIN.
 2. MAX. TIGHTENING TORQUE ON MOUNTING SCREWS IS 1.7 Nm.
 3. MAXIMUM RECOMMENDED WORKING LOAD EXERTED BY KEYPER ON PAWL IS 265 N. AVERAGE ULTIMATE LOAD IS 530 N.