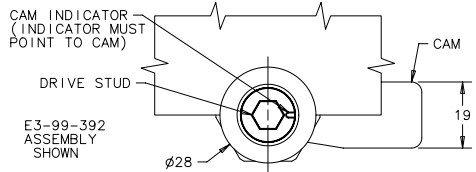


southco		PROPRIETARY ITEM - EXCEPT FOR USES EXPRESSLY GRANTED IN WRITING, INFORMATION DISCLOSED HEREON IS CONFIDENTIAL, AND ALL RIGHTS, PATENT AND OTHERWISE ARE RESERVED BY SOUTHCO, INC.		E5 QUAD LATCH (TOOL SECURED) M22 X 23 HOUSING		DATE 10OCT2007	DRAWN KPL	CHKD MJS	SCALE 1:1	DRAWING NUMBER J-E5-99-392
REV	DATE	DRAWN/CHKD	DESCRIPTION	PART NUMBER: E5-99-39 W				MILLIMETERS		
A	27MAR2008	KPL/CHKD	REDESIGNED & REDRAWN.					ALL DIMENSIONS WITHOUT TOLERANCES ARE FOR REFERENCE ONLY.		
NOTES:				ACTUATION STYLE (SEE BELOW) ←				THIRD ANGLE PROJECTION		

- NOTES:
- SAME AS E5-6-012-UU1, E5-6-022-UU1, E5-6-062-UU1 OR E5-6-072-UU1 EXCEPT FOUR PAWL GRIPS INCLUDED.
 - SEE SHEET 2 FOR INSTALLATION INSTRUCTIONS.
 - COSMETIC SPECIFICATION: ALL SURFACES CONFORM TO A CLASS "D" DESIGNATION AS DESCRIBED IN SOUTHCO COSMETIC SPECIFICATIONS: S-121-01

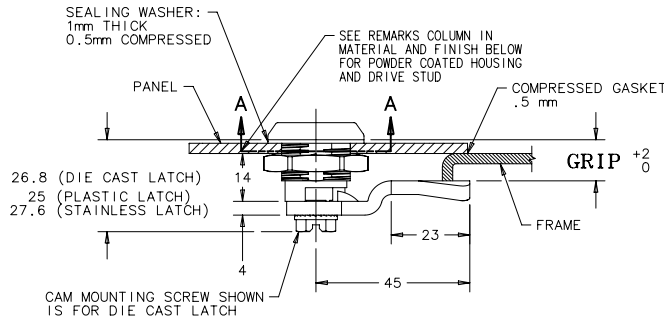
SEALING OPTION: O-RING AND GASKET INCLUDED
MATERIAL AND FINISH: DIE CAST ZINC, BRIGHT CHROME PLATE.

W ACTUATION STYLE



PART NUMBER AND GRIPS OF THE FOUR INCLUDED PAWLS

PAWL PART NUMBER	GRIP
E5-6004	6mm
E5-6007	12mm
E5-6010	18mm
E5-6014	26mm

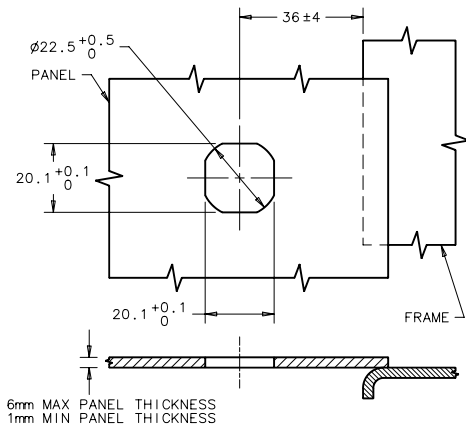


PART NUMBER E5-6-05X-071 SHOWN

MATERIAL AND FINISH:

DIE CAST ZINC VERSION:


- HOUSING: DIE CAST ZINC, CHROME PLATED
- DRIVE STUD: DIE CAST ZINC, CHROME PLATED
- CAM: STEEL, ZINC PLATE WITH BRIGHT CHROMATE
- MOUNTING NUT: DIE CAST ZINC
- CAM MOUNTING SCREW: LOW CARBON STEEL, ZINC PLATE, BRIGHT CHROMATE
- INTERNAL SPRING: STEEL, ZINC PLATE, BRIGHT CHROMATE
- O-RING: NITRILE, BLACK
- SEALING WASHER: POLYURETHANE, BLACK



REV	DATE	DRAWN/CHKD	DESCRIPTION
A	27MAR2008	KPL/CHKD	REDESIGNED & REDRAWN.

NOTES:
1. SEE SHEET 1 FOR PART NUMBERS, MATERIAL & FINISH AND PANEL PREPARATION.

MILLIMETERS
ALL DIMENSIONS WITHOUT TOLERANCES ARE FOR REFERENCE ONLY.



THIRD ANGLE PROJECTION

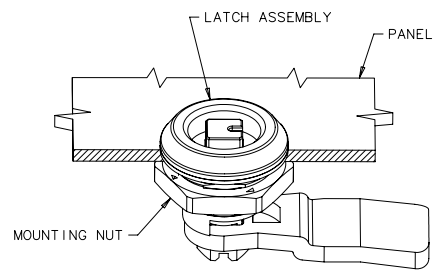
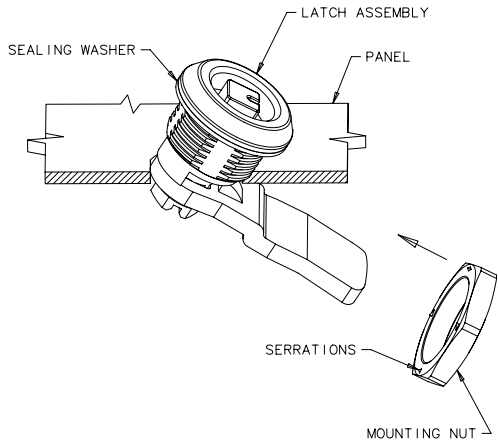
A3 PAPER SIZE

SHEET 2 OF 2

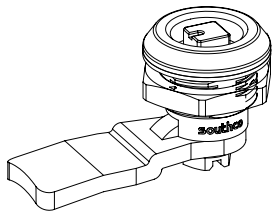
INSTALLATION METHOD 1

USE WHEN GRIP IS EQUAL TO OR EXCEEDS PANEL THICKNESS BY 9mm.

1. PLACE SEALING WASHER ONTO LATCH HOUSING.
2. TILT LATCH THROUGH MOUNTING HOLE.
3. INSTALL MOUNTING NUT AND TIGHTEN TO:
10 N·m MAX (ZINC VERSION)
4.25 N·m MAX (PLASTIC VERSION)
20 N·m MAX (STAINLESS STEEL VERSION)



PART NUMBER E5-6-05X-131 SHOWN

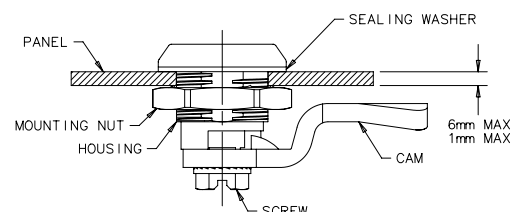
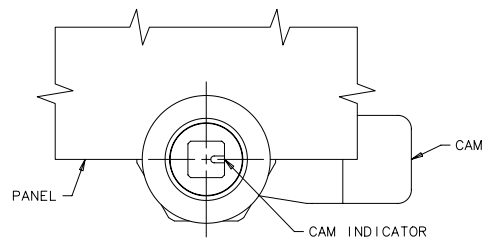
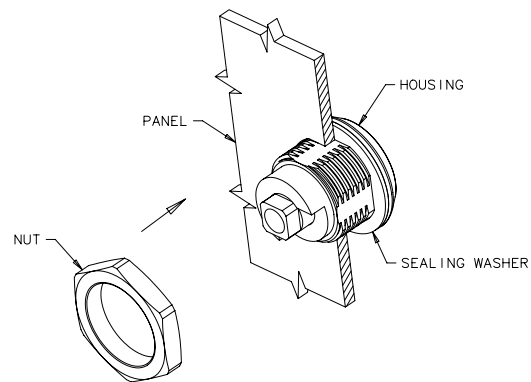
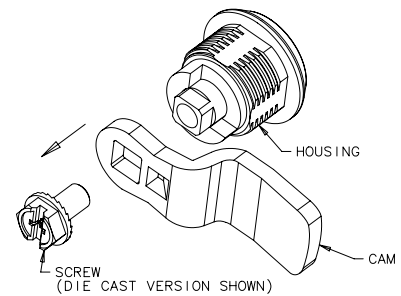


INSTALLATION METHOD 2

REQUIRED WHEN GRIP DOES NOT EXCEED PANEL THICKNESS BY 9mm.

1. REMOVE SCREW FROM HOUSING, DETACHING CAM FROM LATCH ASSEMBLY.
2. PLACE SEALING WASHER ONTO LATCH HOUSING AND PLACE THROUGH MOUNTING HOLE.
3. INSTALL MOUNTING NUT AND TIGHTEN TO:
10 N·m MAX (ZINC VERSION)
4.25 N·m MAX (PLASTIC VERSION)
20 N·m MAX (STAINLESS STEEL VERSION)
4. RE-ATTACH CAM TO LATCH ASSEMBLY. ASSURE THAT CAM INDICATOR POINTS TO CAM LOCATION.
5. INSTALL SCREW AND TIGHTEN TO:
4 N·m MAX (ZINC VERSION)
3.1 N·m MAX (PLASTIC VERSION)
10 N·m MAX (STAINLESS STEEL VERSION)

FOR PUSH TO CLOSE CAMS, SEE DRAWING J-E5-51.



PART NUMBER E5-6-05X-051 SHOWN