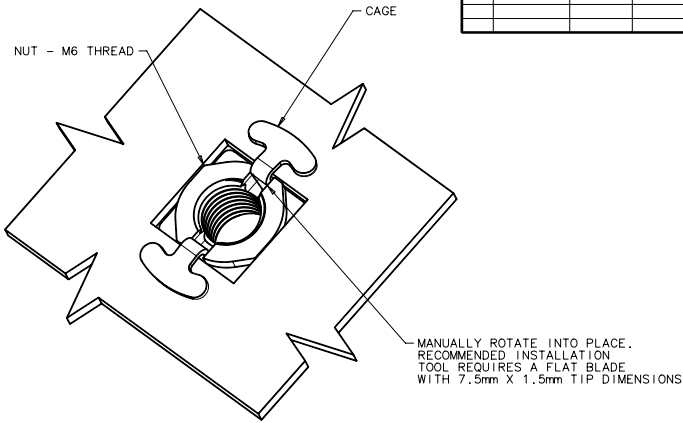


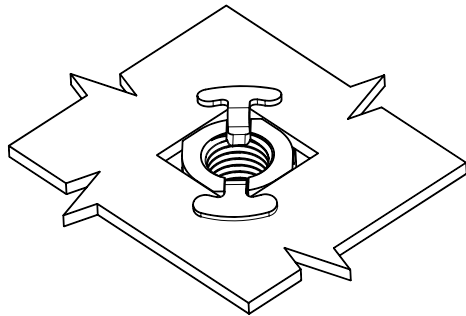
NOTES:

- A. COSMETIC SPECIFICATION:
ALL SURFACES ARE TO CONFORM TO A CLASS "D" DESIGNATION AS DESCRIBED IN SOUTHCO COSMETIC SPECIFICATION S-121-02 FOR ZINC PLATING.
- B. RoHS COMPLIANT.

southco		PROPRIETARY ITEM - EXCEPT FOR USES EXPRESSLY GRANTED IN WRITING INFORMATION DISCLOSED HEREON IS CONFIDENTIAL AND ALL RIGHTS PATENT AND OTHERWISE ARE RESERVED BY SOUTHCO, INC.		DM DUOSERT INSERT - M6 THREAD (FOR 1.2mm PANEL)		DATE	DRAWN	CHKD	SCALE	DRAWING NUMBER
						22JUN2005	AJH		3:1	J-DM-95-10
REV	DATE	DRAWN/CHKD	DESCRIPTION	ITEM	PART NUMBER	MATERIAL	FINISH		MILLIMETERS	
A	29JUN2005	AJH/MDY	PRN: P2005-0796	ASSEMBLY	DM-95-10-12-11	-	-		ALL DIMENSIONS WITHOUT TOLERANCES ARE FOR REFERENCE ONLY.	
B	30SEP2005	AJH/MDY	PRN: P2005-1337	NUT	-	DIE CAST ZINC	ZINC, CHROMATE CONVERSION COATING		THIRD ANGLE PROJECTION	
				CAGE	-	STAINLESS STEEL	NATURAL		A3 PAPER SIZE	



PLACE DUOSERT INTO PANEL, ROTATE INTO PLACE



INSTALLED

