

DRAWING NUMBER J-C6-100	REV.	DATE	BY-CHKD	REVISIONS
	H	25OCT96	JGK	PRN: S-1-06B
	I	01 DEC 97	TCP Swo	PRN: C6-37



SOUTHCO C6 DOOR POSITIONING HINGE

- ONE DETENT POSITIONS THE DOOR OPEN AT A GIVEN ANGLE.
- ANOTHER DETENT BIASES THE DOOR CLOSED AGAINST A FRAME.

DATE	DRAWN	CHKD	SCALE
27JAN92	JAD	---	FULL

DRAWING NUMBER
J-C6-100

ASSEMBLY DESCRIPTION

ASSEMBLY PART No.	POSITIONING TORQUE	DETENTED OPEN ANGLE
C6-1	LOW	
C6-2	MED.	
C6-3	HIGH	
C6-4	LOW	
C6-5	MED.	
C6-6	HIGH	
C6-7	LOW	
C6-8	MED.	
C6-9	HIGH	
C6-0	----	

INSTALLATION INSTRUCTIONS

- PREPARE INSTALLATION HOLES AS SHOWN.
- MOUNT HINGE SUB-ASSEMBLY WITH APPROPRIATE FASTENING HARDWARE (NOT SUPPLIED).
- PRESS COVERS IN PLACE IF DESIRED TO HIDE MOUNTING HARDWARE.

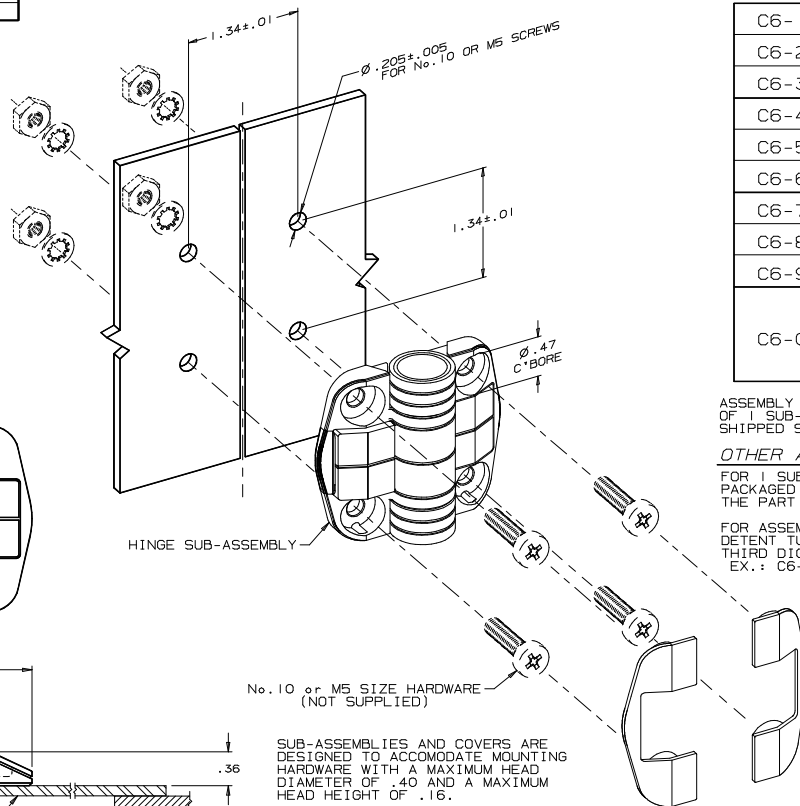
MATERIAL and FINISH

EXTERNAL COMPONENTS

HINGE LEAVES, RETAINING TAB, END PLUGS, AND COVERS: ACETAL, BLACK

INTERNAL COMPONENTS

BALLS: CHROME STEEL, ZINC PLATE, CHROMATE PLUS SEALER.
 SPRINGS: 302 STAINLESS STEEL, NATURAL
 DETENT TUBE: 1065 STEEL HARDENED, ZINC PLATE, CHROMATE PLUS SEALER
 OR 304 STAINLESS STEEL, PASSIVATED



ASSEMBLY PART NUMBERS SHOWN CONSIST OF 1 SUB-ASSEMBLY AND 2 COVERS, SHIPPED SEPARATELY, BULK.

OTHER ASSEMBLY PART No.'s

FOR 1 SUB-ASSEMBLY AND 2 COVERS PACKAGED IN A POLY BAG, ADD -P TO THE PART NUMBER. EX.: C6-3-P

FOR ASSEMBLIES WITH STAINLESS STEEL DETENT TUBES, INSERT A 2 BEFORE THE THIRD DIGIT OF THE PART NUMBER. EX.: C6-23 INSTEAD OF C6-3

ALL DIMENSIONS ARE INCHES.

FORMAT B 2/88
 PROPRIETARY ITEM - EXCEPT FOR USES EXPRESSLY GRANTED IN WRITING, ALL RIGHTS RESERVED AND ALL RIGHTS PATENT AND OTHERS ARE RESERVED BY SOUTHCO, INC.