

- NOTES:
- A. MATERIAL AND FINISH:
- HOUSING, HANDLE, BUTTON AND PAWL: DIE CAST ZINC, BLACK POWDER COATING.
  - LEVER AND CRANK: DIE CAST ZINC, CLEAR CHEMICAL PROTECTIVE FILM.
  - TORSION SPRING: 302 STAINLESS STEEL, PASSIVATED.
  - ROLL PIN: 420 STAINLESS STEEL, PASSIVATED.
  - O-RING: Buna-N, NATURAL.
  - LOCK PLUG: DIE CAST ZINC, BLACK POWDER COATING.
  - SHUTTERED LOCK PLUG: DIE CAST ZINC WITH ALUMINUM, BLACK ANODIZED CAP AND 304 STAINLESS STEEL, NATURAL SHUTTER.
  - KEYS: BRASS, NICKEL PLATED.
  - ADJUSTING SCREW, JAM NUT, MOUNTING BRACKET AND SCREW: 1010 STEEL, ZINC PLATED WITH SEALED YELLOW CHROMATE; OR, 300 SERIES STAINLESS STEEL, PASSIVATED (SEE TABLE).

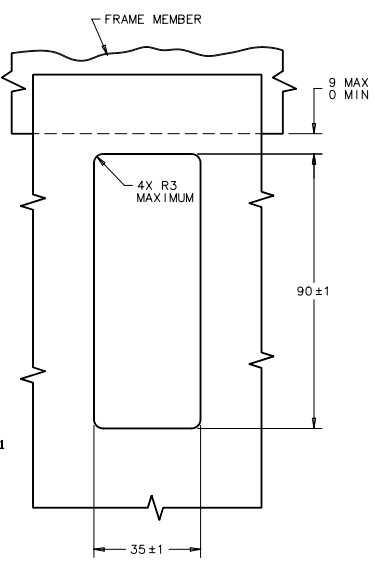
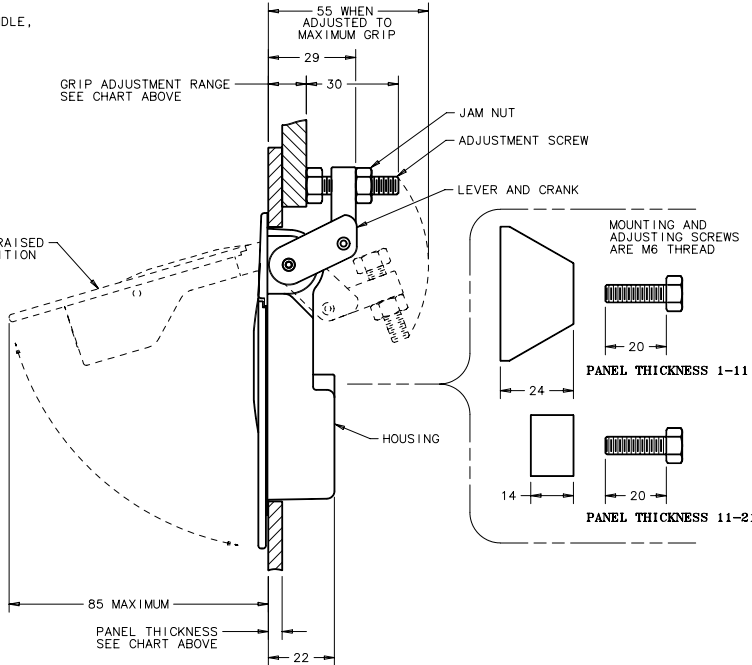
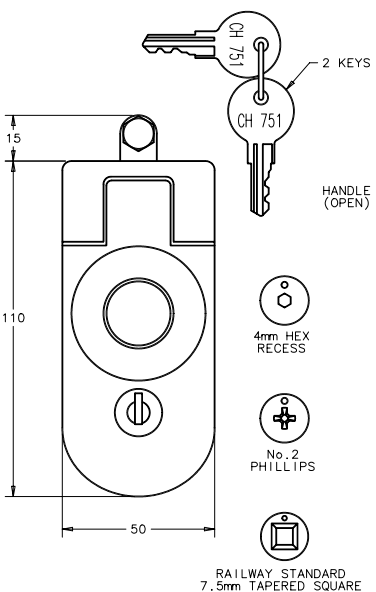
<b>southco</b>				PROPRIETARY ITEM - EXCEPT FOR USES EXPRESSLY GRANTED IN WRITING INFORMATION DISCLOSED HEREON IS CONFIDENTIAL AND ALL RIGHTS PATENT AND OTHERWISE ARE RESERVED BY SOUTHCO, INC.				SOUTHCO No. C5 SEALED LEVER LATCH WITH KEY LOCK				DATE	DRAWN	CHKD	SCALE	DRAWING NUMBER
												26MAR92	JAD		0.75:1	J-C5-L1
REV	DATE	DRAWN/CHKD	DESCRIPTION													
I	13AUG2004	VN1/RLR	PRN: P2004-0893													
J	08OCT2004	MJR/MDY	PRN: P2004-1152													
K	15NOV2004	MDY/RLR	PRN: P2004-1308													
<b>MILLIMETERS</b>																
ALL DIMENSIONS WITHOUT TOLERANCES ARE FOR REFERENCE ONLY.																
															THIRD ANGLE PROJECTION	
															A3 PAPER SIZE	

- X = POWDER COATING COLOR
- CARDINAL WHITE WITH STEEL HARDWARE
  - CARDINAL WHITE WITH STAINLESS STEEL HARDWARE
  - SILVER METALLIC POLYESTER URETHANE WITH STEEL HARDWARE
  - SILVER METALLIC POLYESTER URETHANE WITH STAINLESS STEEL HARDWARE
  - BLACK WITH STEEL HARDWARE
  - BLACK WITH STAINLESS STEEL HARDWARE
  - SATIN SILVER WITH STEEL HARDWARE
  - SATIN SILVER WITH STAINLESS STEEL HARDWARE

PANEL THICKNESS	SHORT LEVER GRIP RANGE*	STANDARD KEY LOCK	SHUTTERED KEY LOCK		4 MM HEX RECESS	No. 2 PHILLIPS	RAILWAY STANDARD	WITHOUT LOCK PLUG
			BLACK POWDER COAT PLATED STEEL HARDWARE	STAINLESS STEEL HARDWARE				
1-11	1-14	C5-21-1X	C5-31-15	C5-31-16	C5-41-1X	C5-51-1X	C5-61-1X	C5-91-1X
11-21		C5-22-1X	C5-32-15	C5-32-16	C5-42-1X	C5-52-1X	C5-62-1X	C5-92-1X

- B. LOCKPLUG INSTALLATION:
- POSITION LOCKPLUG AND ORIENT RETAINING WAFER (LAST WAFER LOCATED AT THE BOTTOM OF LOCK) AT THE 3 O'CLOCK POSITION AND INSERT INTO THE HANDLE.
  - BE SURE THE LOCKPLUG IS FULLY SEATED AGAINST THE HANDLE, THEN REMOVE KEY.

\* MEDIUM LEVER GRIP RANGE AVAILABLE FROM 14 TO 29 MILLIMETERS.  
 REFERENCE DRAWING NUMBER J-C5-L2  
 LONG LEVER GRIP RANGE AVAILABLE FROM 29 TO 45 MILLIMETERS.  
 REFERENCE DRAWING NUMBER J-C5-L3



PANEL PREPARATION