

southco

PROPERTY NOTICE: EXCEPT FOR USES EXPRESSLY SET FORTH HEREIN, ALL RIGHTS, TITLE AND INTERESTS IN THIS DOCUMENT ARE RESERVED BY SOUTHCO, INC.

REV. DATE: 03/13/2003
 K 30 JUN 2003 RLP/WJS PRN: P2003-0559
 L 13 JUL 2003 RLP/WJS PRN: P2003-0893
 M 13 AUG 2004 VNI/RLR PRN: P2004-0893
 N 09 NOV 2004 MDY/RLR PRN: P2004-1308

DESCRIPTION: No. C2 LEVER LATCH ASSEMBLY WITH LOCKING RAISED TRIGGER

DRAWING NUMBER: J-C2-32-2

DRAWING SCALE: 1:1

DATE: 23 FEB 93

DRAWN (CHKD): JCK

MILLIMETERS

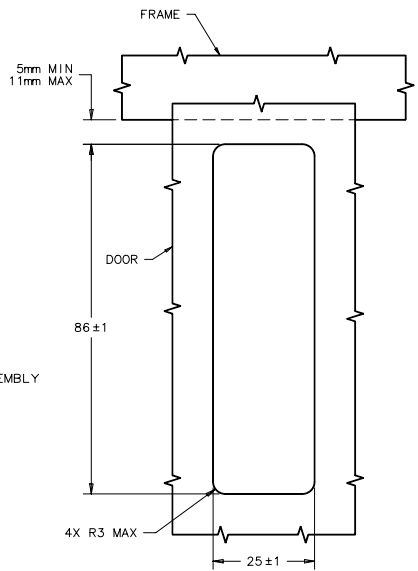
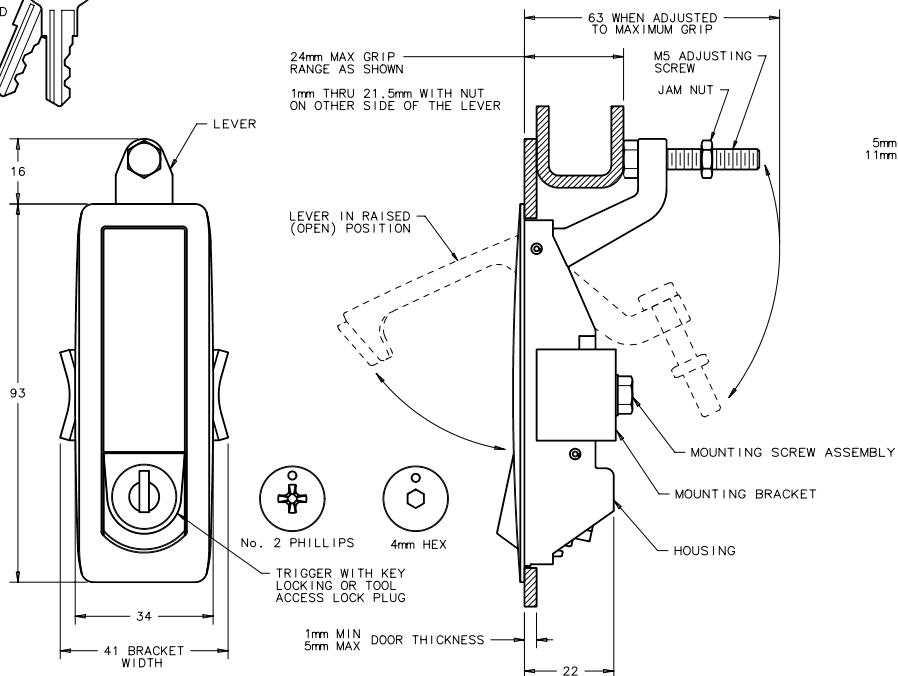
ALL DIMENSIONS WITHOUT REFERENCE ONLY.

THIRD ANGLE PROJECTION

A3 PAPER SIZE

	ASSEMBLY PART NUMBER TABLE						
	BLACK POWDER COATED	TEXTURED CHROME FINISH	SILVER POLYESTER POWDER COATED	CARDINAL WHITE POWDER COATED	LIGHT GRAY POWDER COATED	SILVER METALLIC POWDER COATED	FURNITURE WHITE POWDER COATED
KEY LOCKING	C2-32-25	C2-32-21	C2-32-27	C2-32-24	C2-32-26	C2-32-28	C2-32-29
4mm HEX RECESS	C2-32-45	C2-32-41	C2-32-47	C2-32-44	C2-32-46	C2-32-48	C2-32-49
No. 2 PHILLIPS	C2-32-105	C2-32-101	C2-32-107	C2-32-104	C2-32-106	C2-32-108	C2-32-109
WITHOUT LOCK PLUG	C2-32-135	C2-32-131	C2-32-137	C2-32-134	C2-32-136	C2-32-138	C2-32-139

- NOTES:
- A. MATERIAL AND FINISH
1. HOUSING, LEVER, LOCK PLUG AND TRIGGER: DIE CAST ZINC. SEE ASSEMBLY PART NUMBER TABLE.
 2. U-SPRING: 302 STAINLESS STEEL, PASSIVATED.
 3. TORSION SPRING: 302 STAINLESS STEEL, NATURAL.
 4. SPIROL PIN: SAE 51420, NATURAL
 5. LOCKWASHER: SPRING STEEL, ZINC ALLOY PLATE BRIGHT PLUS SEALER.
 6. SCREWS AND HEX NUT: LOW CARBON STEEL, ZINC ALLOY PLATE BRIGHT PLUS SEALER.
 7. BRACKET: 1010 STEEL, ZINC ALLOY PLATE BRIGHT PLUS SEALER.
 8. KEYS: BRASS, NICKEL PLATED.
- B. MOUNTING SCREW ASSEMBLY CONSISTS OF: M5 SCREW WITH LOCKWASHER. USE LONGER SCREWS (NOT SUPPLIED) FOR THICKER DOORS.
- C. LOCKPLUG INSTALLATION:
1. POSITION LOCKPLUG AND ORIENT RETAINING WAFER (LAST WAFER LOCATED AT THE BOTTOM OF LOCK) AT THE 3 O'CLOCK POSITION AND INSERT INTO THE TRIGGER.
 2. BE SURE THE LOCKPLUG IS FULLY SEATED AGAINST THE TRIGGER, THEN REMOVE KEY.



PANEL PREPARATION