

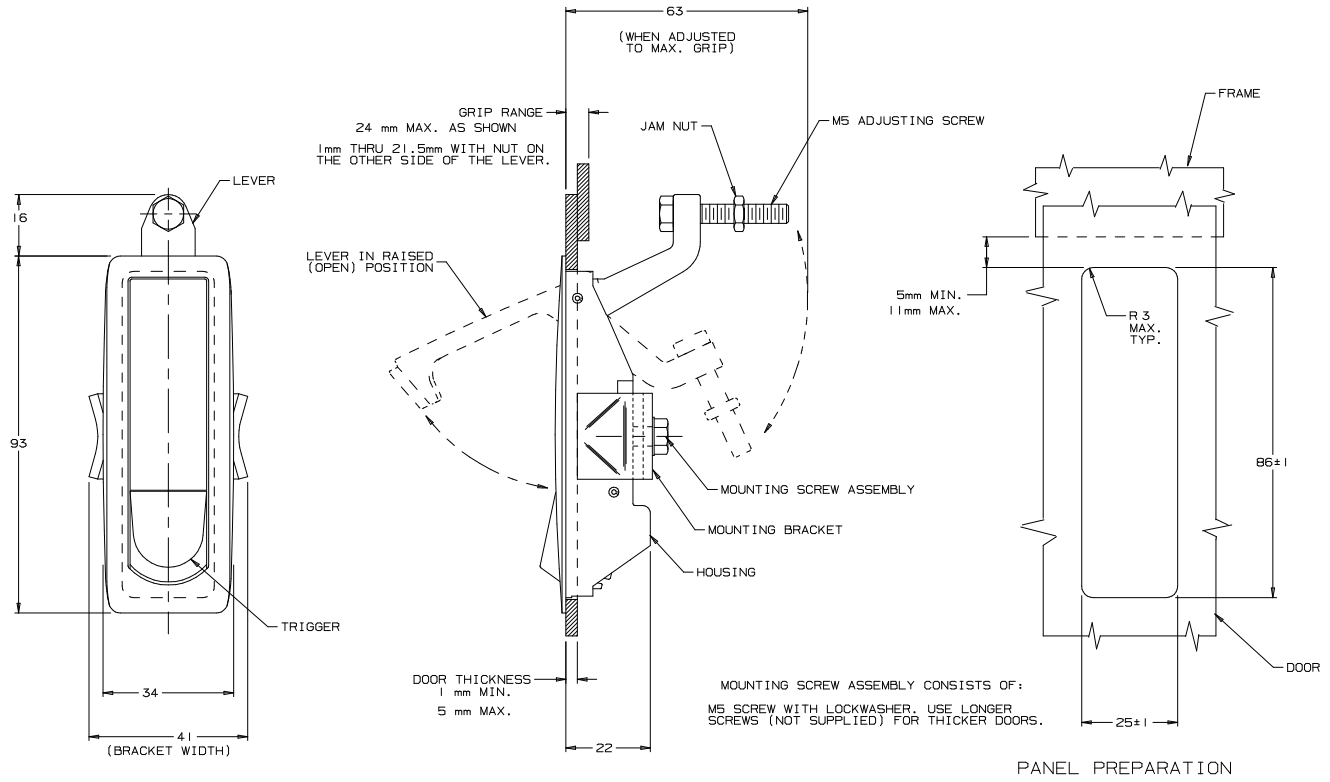
SOUTHCO No. C2 LEVER LATCH ASSEMBLY WITH RAISED TRIGGER		DATE	DRAWN	CHKD	SCALE	DRAWING NUMBER
		23FEB93	J	G	K	1:1
SOUTHCO		REV.	DATE	BY	CHKD	REVISIONS
A	14 MAR 94	JAD	PRN: C2-84			
B	14 DEC 95	CHW	ADDED PART NUMBER *C2-32-17*			
C	11 OCT 96	SWD	PRN: S-93-23			
D	23 FEB 99	JDK	CHW PRN: C2-139			

ASSEMBLY PART NUMBER TABLE		
BLACK POWDER COATED	TEXTURED CHROME FINISH	SILVER POLYESTER POWDER COATED
C2-32-15	C2-32-11	C2-32-17

MATERIAL AND FINISH

LATCH ASSEMBLY CONSISTS OF:
 HOUSING, LEVER, AND TRIGGER: DIE CAST ZINC, SEE ASSEMBLY PART NUMBER TABLE.
 SPRINGS: 302 STAINLESS STEEL, PASSIVATED.
 ROLL PINS: 420 STAINLESS STEEL, PASSIVATED.
 LOCKWASHER: SPRING STEEL, ZINC ALLOY PLATE BRIGHT, PLUS SEALER.
 SCREWS AND HEX NUT: LOW CARBON STEEL, ZINC ALLOY PLATE BRIGHT, PLUS SEALER.
 BRACKET: 1010 STEEL, ZINC ALLOY PLATE BRIGHT, PLUS SEALER.

DRAWING NUMBER
J-C2-32-1



THIRD ANGLE PROJECTION. ALL DIMENSIONS ARE IN MILLIMETERS.
 PROPRIETARY ITEM - EXCEPT FOR USES EXPRESSLY GRANTED IN WRITING AND OTHERWISE INDICATED HEREIN, SOUTHCO, INC.