

southco

PROPRIETARY ITEM - EXCEPT FOR USES EXPRESSLY GRANTED IN WRITING INFORMATION DISCLOSED HEREON IS CONFIDENTIAL AND ALL RIGHTS PATENT AND OTHERWISE ARE RESERVED BY SOUTHCO, INC.

NO. A3 FLUSH SLIDE LATCH ASSEMBLY

DATE	DRAWN	CHKD	SCALE	DRAWING NUMBER
8-16-85	ESK		1:1	J-A3-40-625-A

REV	DATE	DRAWN/CHKD	DESCRIPTION
M	20APR94	JGK	REDRAWN ON CAD & PRN: A3-62
N	25MAY2001	RJB	PRN: P2001-0259
O	24JUL2003	AJH/DLH	PRN: P2003-0629

ASSEMBLY	SLIDE MATERIAL
A3-40-625-XX	TEXTURED ABS

INCHES

ALL DIMENSIONS WITHOUT TOLERANCES ARE FOR REFERENCE ONLY.



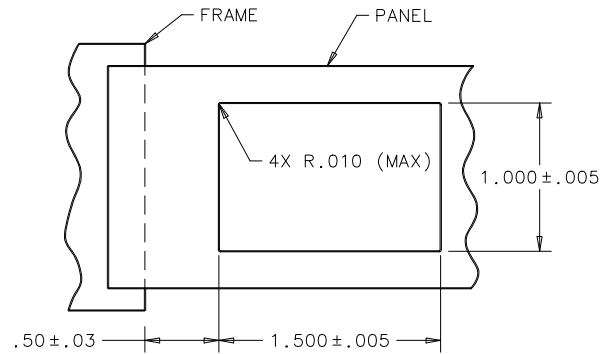
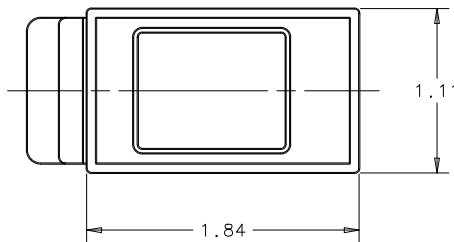
NOTES:

A. INSTALLATION:

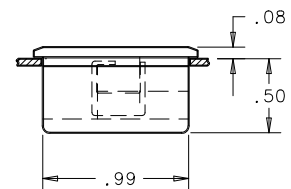
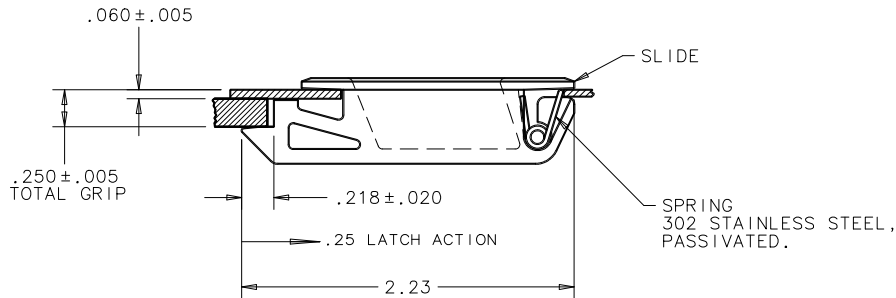
1. PREPARE A BURR-FREE HOLE AS SHOWN.
2. SLIP FRONT OF LATCH THROUGH THE HOLE AND PUSH FORWARD.
3. SNAP BACK END OF LATCH INTO POSITION.

B. SLIDE COLORS (-XX):

- 03 PEARL GRAY
- 04 DARK BROWN
- 09 PEBBLE GRAY (IBM)
- 11 WHITE
- 12 BLACK
- 14 GRAY
- 15 BEIGE



PANEL PREPARATION



PAT. No. 3,841,674