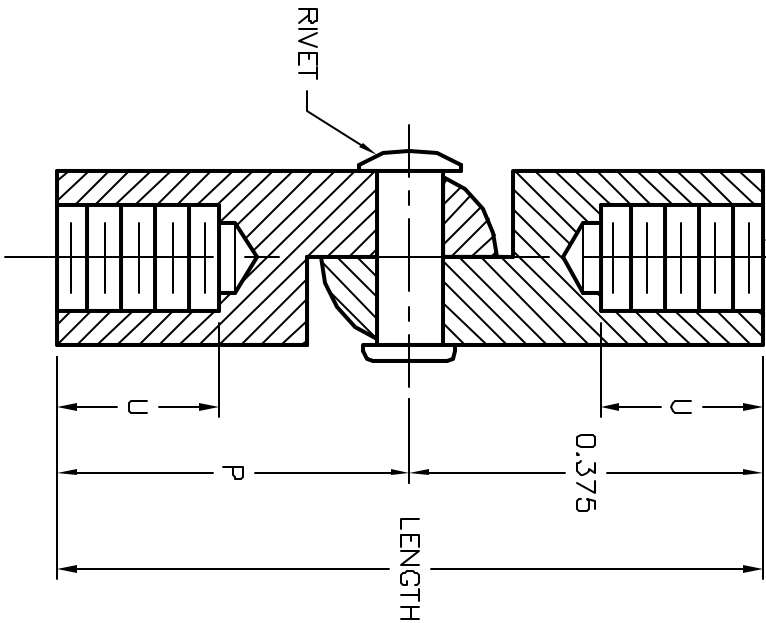


ALL RIGHTS RESERVED. NO PORTION OF THIS PUBLICATION, WHETHER IN WHOLE OR IN PART CAN BE REPRODUCED WITHOUT THE EXPRESS WRITTEN CONSENT OF SPC TECHNOLOGY.

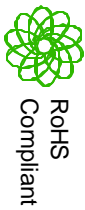
REVISIONS			DOC. NO. SPC-F005 * Effective 12/21/08 * DCP No. B80					
DCP #	REV	DESCRIPTION	DRAWN	DATE	CHECKD	DATE	APPRVD	DATE
1963	A	RELEASED	JLN	10/08/08	JWM	10/08/08	JWM	10/08/08

SEE THE CHART
FOR THREAD SIZE
2 PLCS.



SPC TYPE NO.	THREAD SIZE	D	LENGTH (INCHES)	U	P
SPC21611	4-40	.187	1.000	.250	.625
SPC21608	6-32	.250	.750	.172	.375
SPC21607			1.000	.250	.625
SPC21610	8-32		.750	.172	.375
SPC21609		1.000	.250	.625	

MATERIAL: BRASS, ZINC PLATED AND GOLD IRIDITE



DISCLAIMER:
ALL STATEMENTS AND TECHNICAL INFORMATION CONTAINED HEREIN ARE BASED UPON INFORMATION AND/OR TESTS WE BELIEVE TO BE ACCURATE AND RELIABLE. SINCE CONDITIONS OF USE ARE BEYOND OUR CONTROL, THE USER SHALL DETERMINE THE SUITABILITY OF THE PRODUCT FOR THE INTENDED USE AND ASSUME ALL RISK AND LIABILITY WHATSOEVER IN CONNECTION THEREWITH.



SPC TECHNOLOGY

DRAWING TITLE:

FEMALE/FEMALE, HINGED STANDOFF

TOLERANCES UNLESS OTHERWISE SPECIFIED
DECIMAL .XXX ±.005
ANGULAR ±1/2°

DRAWN BY:	DATE:
Jason Nash	10/08/08
CHECKED BY:	DATE:
JWM	10/08/08
APPROVED BY:	DATE:
JWM	10/08/08

SIZE	DWG. NO.	ELECTRONIC FILE	REV
A	TA-953	TA-953.DWG	A
SCALE:	NTS	U.O.M.: INCHES	SHEET: 1 OF 1