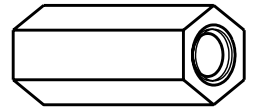
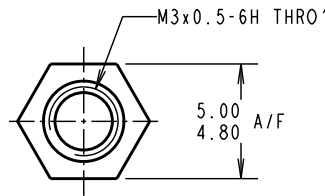
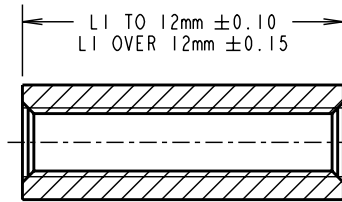


Customer Information Sheet

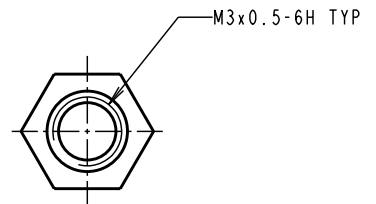
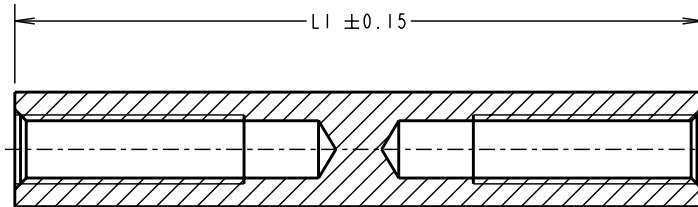
DRAWING No.: R30-100XX02 SHEET 2 OF 2 IF IN DOUBT - ASK (C) NOT TO SCALE THIRD ANGLE PROJECTION ALL DIMENSIONS IN mm

ALL SPACERS UP TO & INCLUDING 28mm

22 TO 28mm SPACERS DO NOT HAVE A THROUGH TAPPED HOLE, BUT HAVE A MINIMUM THREAD LENGTH OF 10mm FROM BOTH ENDS.



ALL SPACERS OVER 28mm



PART No.	LI	PART No.	LI	PART No.	LI	PART No.	LI
R30-1000402	4.00	R30-1001102	11.00	R30-1001802	18.00	R30-1003002	30.00
R30-1000502	5.00	R30-1001202	12.00	R30-1002002	20.00	R30-1003202	32.00
R30-1000602	6.00	R30-1001302	13.00	R30-1002102	21.00	R30-1003402	34.00
R30-1000702	7.00	R30-1001402	14.00	R30-1002202	22.00	R30-1003502	35.00
R30-1000802	8.00	R30-1001502	15.00	R30-1002402	24.00	R30-1003602	36.00
R30-1000902	9.00	R30-1001602	16.00	R30-1002502	25.00	R30-1003902	39.00
R30-1001002	10.00	R30-1001702	17.00	R30-1002802	28.00	R30-1004002	40.00

ORDER CODE:
R30-100XX02
LENGTH LI IN mm

CP	13	19.04.10	10711
NAME	ISS.	DATE	C/NOTE
APPROVED: C.PENROSE			
CHECKED: R.ADDE			
DRAWN: A.LIOTTA			
CUSTOMER REF.:			
ASSEMBLY DRG:			

HARWIN

HARWIN USA
TEL: 603 893 5376
FAX: 603 893 5396
mis@harwin.com

HARWIN Europe (UK)
TEL: 023 9231 4545
FAX: 023 9231 4590
mis@harwin.co.uk

HARWIN Asia
TEL: +65 6 779 4909
FAX: +65 6 779 3868
mis@harwin.com.sg

THIS DRAWING AND ANY INFORMATION OR DESCRIPTIVE MATTER SET OUT HEREON ARE CONFIDENTIAL AND COPYRIGHT PROPERTY OF THE HARWIN GROUP AND MUST NOT BE DISCLOSED, LOANED, COPIED OR USED FOR MANUFACTURING, TENDERING OR FOR ANY OTHER PURPOSE WITHOUT THEIR WRITTEN PERMISSION.

TOLERANCES
X. = ±1mm
X.X = ±0.25mm
X.XX = ±0.10mm
X.XXX = ±0.01mm
ANGLES = ±5°
UNLESS STATED

MATERIAL: BRASS
CW614N M TO BS EN 12164
(CuZn39Pb3)
FINISH: NICKEL
S/AREA: mm²

TITLE: M3 HEXAGONAL FEMALE SPACER

DRAWING NUMBER: **R30-100XX02**

SHT
2
OF
2