

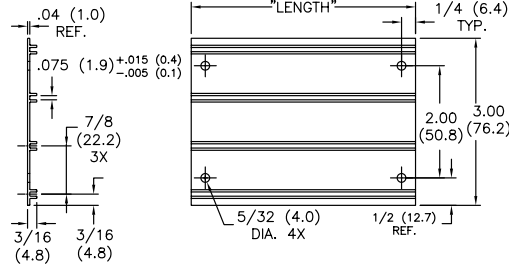
# CARD GUIDES & PULLERS

## ECBG Series

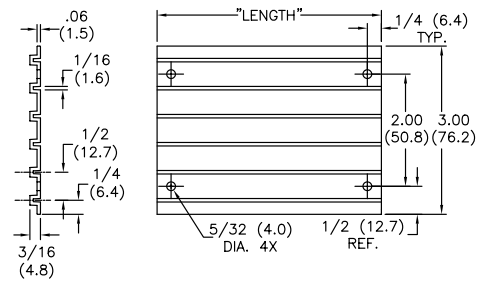
### Circuit Board Guide, Extruded



### ECBG-4



### ECBG-6



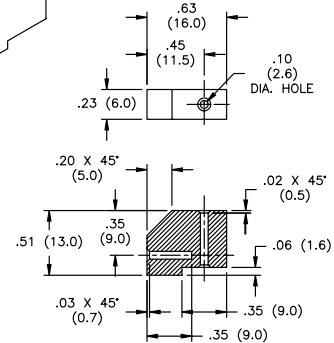
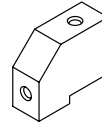
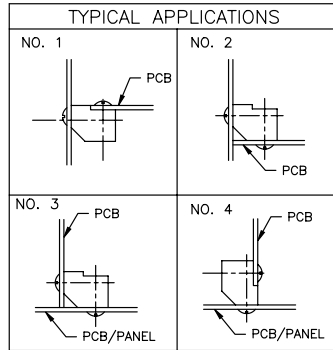
#### Features

- Accommodates 1/16" (1.6mm) nominally thick board
- Custom lengths available by special order

Material: PVC, RMS-04  
Color: Black

ECBG-4 Part No.	ECBG-6 Part No.	Standard Pack: 100 per bag Length ±.020 (0.5)
ECBG-4-1	ECBG-6-1	1 (25.4)
ECBG-4-2	ECBG-6-2	2 (50.8)
ECBG-4-4	ECBG-6-4	4 (101.6)
ECBG-4-6	ECBG-6-6	6 (152.4)

## PCB-MB Mounting Block



#### Features

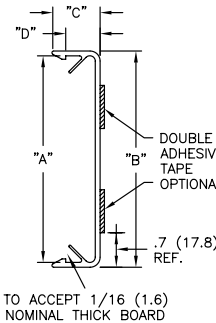
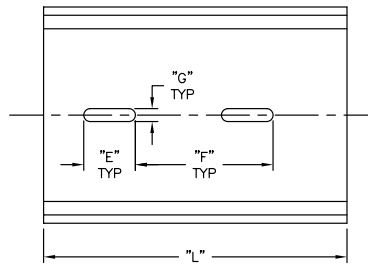
- Mounts with a #4 (Type B) (M-3) self-tapping screw

Material: Nylon 6/6, RMS-01  
Color: Natural

Standard Pack: 1000 per bag  
Flame Retardant Nylon, RMS-19 available by special order.

## PCT/PCTE Series

### Printed Circuit Board Track



#### Features

- Custom lengths available by special order
- PLTE Eurocard design now accommodates standard Eurocard 100mm x 160mm x 1.6mm

Material: Rigid PVC • Double Back Adhesive Tape, RMS-15 • Color: Gray

Part No.	Description	Standard Pack: 25/pack							
		"A" (Board Width)	"B"	"C"	"D"	"E" ±1/16 (1.6)	"F" ±1/16 (1.6)	"G" ±1/16 (1.6)	"L"
PCTE-100-1-04S	With Slots, No Tape	3.94 (100.1)	4.10 (104.1)	.67 (17.0)	.43 (10.9)	.79 (20.1)	1.77 (45.0)	.20 (5.1)	6.3 REF
PCTE-100-1-04T	With Tape, No Slots					3/4 (19.1)	2.00 (50.8)	3/16 (4.8)	
PCT-3000-04S	With Slots, No Tape	3.00 (76.2)	3.14 (79.8)	.70 (17.8)		3/4 (19.1)	2.00 (50.8)	3/16 (4.8)	48.0 ±0.25
PCT-3000-04T	With Tape, No Slots								