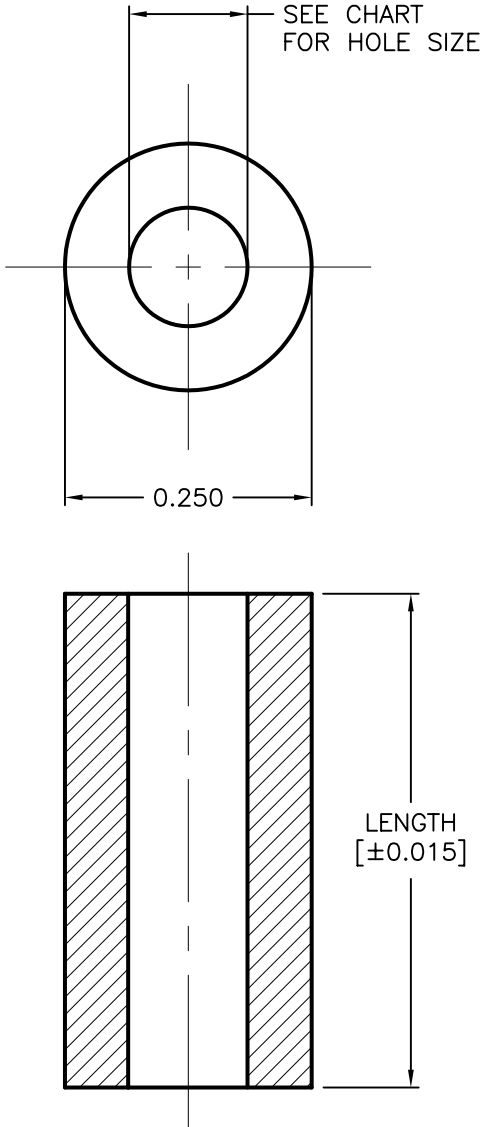


| DCP # | REV | DESCRIPTION | DRAWN | DATE | CHECKD | DATE | APPRVD | DATE |
|-------|-----|--------------------------|-------|---------|--------|---------|--------|---------|
| 564 | C | REDRAWN; WAS ON RN-*-*A | HYO | 4/6/00 | JC | 10/6/00 | JC | 10/6/00 |
| 1892 | D | Update To RoHS Compliant | EO | 3/14/06 | HO | 3/15/06 | HO | 3/15/06 |



| SPC TYPE NO. | HOLE SIZE | LENGTH (INCHES) |
|--------------|--------------------|-----------------|
| RN-4-125-A | 0.120 FOR #4 SCREW | 0.125 |
| RN-4-250-A | | 0.250 |
| RN-4-375-A | | 0.375 |
| RN-4-500-A | | 0.500 |
| RN-4-750-A | | 0.750 |
| RN-6-125-A | 0.144 FOR #6 SCREW | 0.125 |
| RN-6-250-A | | 0.250 |
| RN-6-375-A | | 0.375 |
| RN-6-500-A | | 0.500 |
| RN-6-750-A | | 0.750 |
| RN-6-1000-A | 1.000 | |
| RN-8-250-A | 0.171 FOR #8 SCREW | 0.250 |
| RN-8-375-A | | 0.375 |
| RN-8-500-A | | 0.500 |
| RN-8-750-A | | 0.750 |
| RN-8-1000-A | | 1.000 |

1. MATERIAL: NYLON 6/6
2. COLOR: NATURAL

SPC-F004.DWG

| | | | | | | |
|--|-------------|------------|---------------------------------|----------------|-----------------|---------------|
| TOLERANCES: UNLESS OTHERWISE SPECIFIED DECIMAL .XXX ± 0.005 | DRAWN BY: | DATE: | DRAWING TITLE: | | | |
| | J.P. | 4/15/93 | ROUND NYLON THROUGH-HOLE SPACER | | | |
| | CHECKED BY: | DATE: | SIZE | DWG. NO. | ELECTRONIC FILE | REV |
| | J.C. | 4/19/93 | A | TA-250 | TA-250.DWG | D |
| APPROVED BY: | DATE: | SCALE: NTS | | U.O.M.: INCHES | | SHEET: 1 OF 1 |
| K.D. | 4/19/93 | | | | | |

ALL RIGHTS RESERVED. NO PORTION OF THIS PUBLICATION, WHETHER IN WHOLE OR IN PART CAN BE REPRODUCED WITHOUT THE EXPRESS WRITTEN CONSENT OF SPC TECHNOLOGY. DISCLAIMER: ALL STATEMENTS AND TECHNICAL INFORMATION CONTAINED HEREIN ARE BASED UPON INFORMATION AND/OR TESTS WE BELIEVE TO BE ACCURATE AND RELIABLE. SINCE CONDITIONS OF USE ARE BEYOND OUR CONTROL, THE USER SHALL DETERMINE THE SUITABILITY OF THE PRODUCT FOR THE INTENDED USE AND ASSUME ALL RISK AND LIABILITY WHATSOEVER IN CONNECTION THEREWITH.