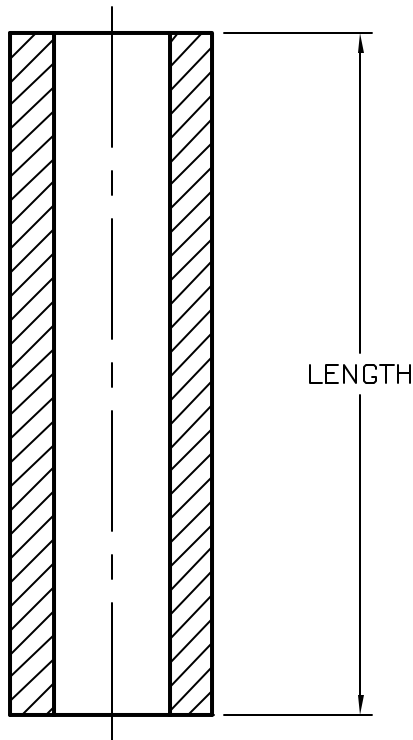
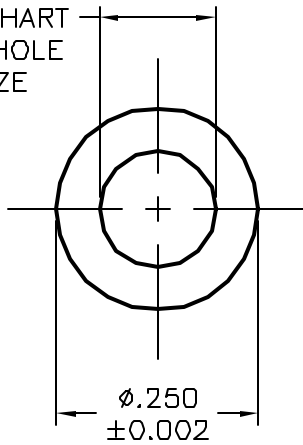


ALL RIGHTS RESERVED. NO PORTION OF THIS PUBLICATION, WHETHER IN WHOLE OR IN PART CAN BE REPRODUCED WITHOUT THE EXPRESS WRITTEN CONSENT OF SPC TECHNOLOGY.

REVISIONS			DOC. NO. SPC-F004 * Effective: 12/21/98 * DCP No: 680					
DCP #	REV	DESCRIPTION	DRAWN	DATE	CHECKD	DATE	APPRVD	DATE
	B	REVISED & REDRAWN	J.P.	4/13/93	JC	4/14/93	K.D.	4/15/93
564	C	REVISED & ADD MORE PARTS	HYO	4/4/00	JC	10/6/00	JC	10/6/00

SEE CHART FOR HOLE SEIZE



SPC TYPE NO.	CLEARANCE HOLE	LENGTH (INCHES)
RA-4-250-A	.120 for #4 SCREW	.250
RA-4-375-A		.375
RA-4-500-A		.500
2879		.625
2882		.750
2883		.875
2886		1.000
2887		1.500
RA-6-250-A	.144 for #6 SCREW	.250
RA-6-375-A		.375
RA-6-500-A		.500
2880		.625
RA-6-750-A		.750
2884		.875
RA-6-1000-A	.171 for #8 SCREW	1.000
2889		2.000
RA-8-250-A		.250
RA-8-375-A		.375
RA-8-500-A		.500
2881		.625
RA-8-750-A	.171 for #8 SCREW	.750
2885		.875
RA-8-1000-A		1.000
2888		1.500
2890		2.000

**MATERIAL: ALUMINUM, CLEAR IRIDITE (MIL-C-5541)**

SPC-F004.DWG

**DISCLAIMER:**  
ALL STATEMENTS AND TECHNICAL INFORMATION CONTAINED HEREIN ARE BASED UPON INFORMATION AND/OR TESTS WE BELIEVE TO BE ACCURATE AND RELIABLE. SINCE CONDITIONS OF USE ARE BEYOND OUR CONTROL, THE USER SHALL DETERMINE THE SUITABILITY OF THE PRODUCT FOR THE INTENDED USE AND ASSUME ALL RISK AND LIABILITY WHATSOEVER IN CONNECTION THEREWITH.



**SPC TECHNOLOGY**

TOLERANCES UNLESS OTHERWISE SPECIFIED DECIMAL .XXX ± .005	DRAWN BY:	DATE:	DRAWING TITLE:			
	J.P.	4/13/93	ROUND ALUMINUM THROUGH-HOLE SPACER			
	CHECKED BY:	DATE:	SIZE	DWG. NO.	ELECTRONIC FILE	REV
	J.C.	4/14/93	A	TA-248	TA-248.DWG	C
	APPROVED BY:	DATE:	SCALE: NTS		U.O.M.: INCHES	SHEET: 1 OF 1
	K.D.	4/15/93				