

4

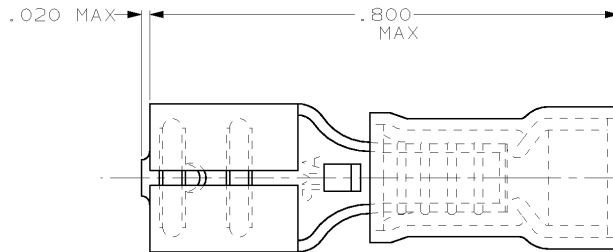
3

2

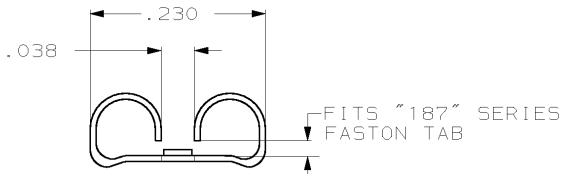
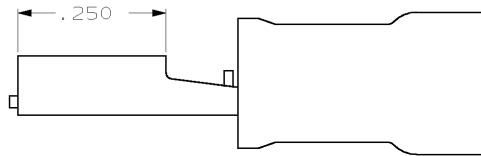
1

THIS DRAWING IS UNPUBLISHED. RELEASED FOR PUBLICATION .19
 © COPYRIGHT 19 BY AMP INCORPORATED. ALL RIGHTS RESERVED.

LOC	DIST	REVISIONS			
P	LTR	DESCRIPTION	DATE	DWN	APVD
G	14	REV PER 063A-0176-02	08APR02	JR	TM



1. INSULATION DIA .170 MAX
2. FITS TAB .020 THK



-	-	-
100	LOOSE PC, BOX	8-640919-1
-	TAPE MOUNTED	640919-2
-	LOOSE PIECE	640919-1
QTY	PACKAGE TYPE	PART NO

AMP INCORPORATED CUSTOMER SERVICE SYSTEM		MAX RECOMMENDED OPERATING TEMPERATURE:	THIS DRAWING IS A CONTROLLED DOCUMENT FOR AMP INCORPORATED. IT IS SUBJECT TO CHANGE AND THE CONTROLLING ENGINEERING ORGANIZATION SHOULD BE CONTACTED FOR THE LATEST REVISION.		DWN	26 JUN 95	AMP Incorporated Harrisburg, PA 17105-3608 NAME RECEPTACLE, 187 SERIES, FASTON™, PID6™, WIRE SIZE, 16-14 AWG					
FOR ADDITIONAL PRODUCT INFORMATION OR COPIES OF DRAWINGS AND TECHNICAL DOCUMENTS	PRODUCT INFORMATION CENTER 1-800-522-6752	-	DIMENSIONS:	TOLERANCES UNLESS OTHERWISE SPECIFIED:	L OLMEDA	26 JUN 95		M ELLIS B BARE PRODUCT SPEC APPLICATION SPEC				
FOR APPLICATION TOOLING INFORMATION	TOOLING ASSISTANCE CENTER 1-800-722-1111	VOLTAGE RATING: -	INCHES	0 PLC ±- 1 PLC ±- 2 PLC ±.015 3 PLC ±- 4 PLC ±- ANGLES ±-	APVD	26 JUN 95			SIZE	CAGE CODE	DRAWING NO	
FOR ORDER ENTRY	1-800-526-5142	CIRCULAR MIL AREA: -	MATERIAL BODY, BRASS .016 SLV, NYLON, COLOR, BLUE	FINISH BODY, TIN	WEIGHT	-		A3	00779	640919		
					CUSTOMER DRAWING		SCALE	NTS	SHEET	1 OF 1	REV	G

AMP 1470-19 REV 09MAY94

25 JAN 1996 10:29:15 AMP12368 <UUI28A>DEPT1132-U.DWG1132-U.RBY-U.FASTON-U.CUST