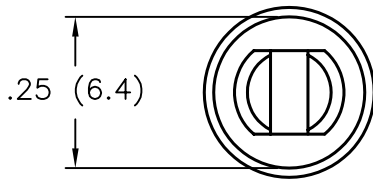
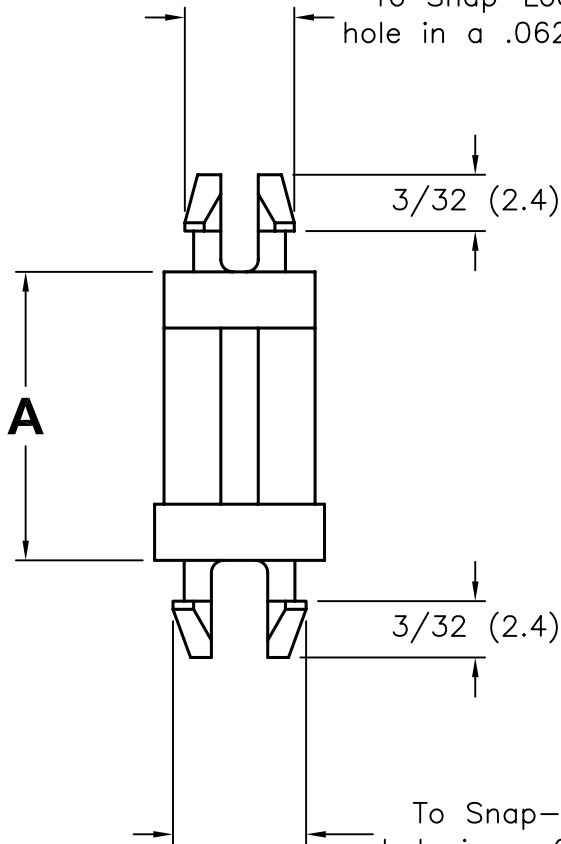


DCP #	REV	DESCRIPTION	DRAWN	DATE	CHECKD	DATE	APPRVD	DATE
1272	B	Clarified Mtg Holes	JWM	4/9/03	JC	4/9/03	JC	4/9/03
1865	C	RoHS ADDED	DCM	10/17/05	JWM	10/18/05	JWM	10/18/05

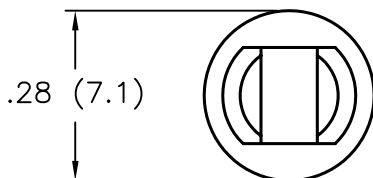


To Snap-Lock in a $.156^{\pm.003}$ [4.00 \pm 0.08] Dia.
hole in a .062 [1.57] Nom. Thk. Board/Chassis



Item No.	"A" $\pm.015$ [0.4]
8476-0422	3/16 [4.8]
8476-0423	1/4 [6.4]
8476-0424	3/8 [9.5]
8476-0425	1/2 [12.7]
8476-0426	5/8 [15.9]
8476-0427	3/4 [19.1]
8476-0428	7/8 [22.2]
8476-0429	1 [25.4]

To Snap-Lock in a $.187^{\pm.003}$ [4.75 \pm 0.08] Dia.
hole in a .062 [1.57] Nom. Thk. Board/Chassis



NOTES:

- MATERIAL: NYLON 6/6
- COLOR: NATURAL

SPC-F004.DWG

TOLERANCES: Tolerances Unless Otherwise Specified: .XX \pm .010 .XXX \pm .005 Frac \pm 1/64	DRAWN BY: Jeff McVicker	DATE: 3/7/00	DRAWING TITLE: Support Post			
	CHECKED BY: John Cole	DATE: 3/14/00	SIZE A	DWG. NO. TA-217	ELECTRONIC FILE TA-217.dwg	REV C
	APPROVED BY: Daniel Carey	DATE: 4/5/00	SCALE: NTS		U.O.M.: INCHES [mm]	SHEET: 1 OF 1

ALL RIGHTS RESERVED. NO PORTION OF THIS PUBLICATION, WHETHER IN WHOLE OR IN PART CAN BE REPRODUCED WITHOUT THE EXPRESS WRITTEN CONSENT OF SPC TECHNOLOGY. DISCLAIMER: ALL STATEMENTS AND TECHNICAL INFORMATION CONTAINED HEREIN ARE BASED UPON INFORMATION AND/OR TESTS WE BELIEVE TO BE ACCURATE AND RELIABLE. SINCE CONDITIONS OF USE ARE BEYOND OUR CONTROL, THE USER SHALL DETERMINE THE SUITABILITY OF THE PRODUCT FOR THE INTENDED USE AND ASSUME ALL RISK AND LIABILITY WHATSOEVER IN CONNECTION THEREWITH.