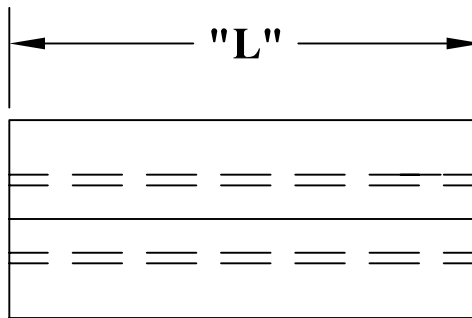
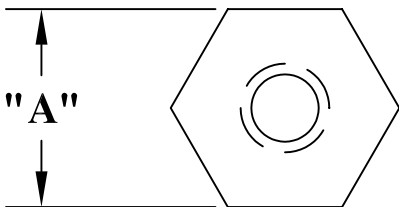


ALL RIGHTS RESERVED. NO PORTION OF THIS PUBLICATION, WHETHER IN WHOLE OR IN PART CAN BE REPRODUCED WITHOUT THE EXPRESS WRITTEN CONSENT OF SPC TECHNOLOGY.

REVISIONS			DOC. NO. SPC-F004 * Effective: 12/21/98 * DCP No: 680						
DCP #	REV	DESCRIPTION	DRAWN	DATE	CHECKD	DATE	APPRVD	DATE	
182	A	RELEASED	J.W.M.	9/24	J.C.	10/10/97	B.B.	10/10/97	
1779	B	RoHS ADDED	DCM	1/24/06	JWM	1/24/06	JWM	1/24/06	



SPC Type Number	Thread Size	"L"	"A"
2415	4-40	1/4 [6.35]	1/4
2416	4-40	3/8 [9.53]	1/4
2417	4-40	1/2 [12.70]	1/4
2418	4-40	5/8 [15.88]	1/4
2419	4-40	3/4 [19.05]	1/4
2420	4-40	7/8 [22.22]	1/4
2421	4-40	1 [25.40]	1/4
2422	6-32	1/4 [6.35]	1/4
2423	6-32	3/8 [9.53]	1/4
2424	6-32	1/2 [12.70]	1/4
2425	6-32	5/8 [15.88]	1/4
2426	6-32	3/4 [19.05]	1/4
2427	6-32	7/8 [22.22]	1/4
2428	6-32	1 [25.40]	1/4
2429	8-32	1/4 [6.35]	1/4
2430	8-32	3/8 [9.53]	1/4
2431	8-32	1/2 [12.70]	1/4
2432	8-32	5/8 [15.88]	1/4
2433	8-32	3/4 [19.05]	1/4
2434	8-32	7/8 [22.22]	1/4
2435	8-32	1 [25.40]	1/4

NOTE: On threaded spacers 3/4" and longer, the tap is 3/8" from each end and not continuous through.

SPC-F004.DWG

DISCLAIMER:
ALL STATEMENTS AND TECHNICAL INFORMATION CONTAINED HEREIN ARE BASED UPON INFORMATION AND/OR TESTS WE BELIEVE TO BE ACCURATE AND RELIABLE. SINCE CONDITIONS OF USE ARE BEYOND OUR CONTROL, THE USER SHALL DETERMINE THE SUITABILITY OF THE PRODUCT FOR THE INTENDED USE AND ASSUME ALL RISK AND LIABILITY WHATSOEVER IN CONNECTION THEREWITH.



SPC TECHNOLOGY

DRAWN BY:		DATE:	DRAWING TITLE:			
Jeff McVicker		9/24/97	Hex Nylon Tapped Spacers			
CHECKED BY:		DATE:	SIZE	DWG. NO.	ELECTRONIC FILE	REV
JOHN COLE		10/10/97	A	TA-124	ta-124.dwg	B
APPROVED BY:		DATE:	SCALE: NTS		U.O.M.: INCHES [mm]	SHEET: 1 OF 1
BRETT BRAATZ		10/14/97				

Unless Otherwise Specified Dimensions Are Shown For Reference Only!