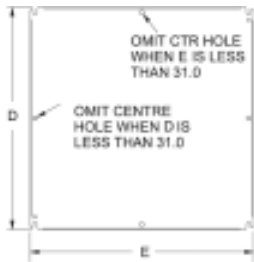


Eclipse Series - NEMA 4, 12

Accessories



Eclipse Inner Panel

- Larger than standard NEMA panel used in same sized enclosure.
- 12 or 14 gauge steel construction (see chart below).
- Larger sizes have 2 or 4 formed flanges for added strength.
- Slotted corner design for easier mounting.
- Finished in white or unpainted galvanized.

| Mild Steel Part No. | Galvanized Part No. | Size | | |
|---------------------|---------------------|------|------|-------|
| | | D | E | Gauge |
| EP1212 | EPG1212 | 10.2 | 10.2 | 14 |
| EP1612 | EPG1612 | 14.2 | 10.2 | 14 |
| EP1616 | EPG1616 | 14.2 | 14.2 | 12 |
| EP1620 | EPG1620 | 14.2 | 18.2 | 12 |
| EP2016 | EPG2016 | 18.2 | 14.2 | 12 |
| EP2020 | EPG2020 | 18.2 | 18.2 | 12 |
| EP2024 | EPG2024 | 18.2 | 22.2 | 12 |
| EP2416 | EPG2416 | 22.2 | 14.2 | 12 |
| EP2420 | EPG2420 | 22.2 | 18.2 | 12 |
| EP2424 | EPG2424 | 22.2 | 22.2 | 12 |
| EP2430 | EPG2430 | 22.2 | 28.2 | 12 |
| EP2442 | EPG2442 | 22.2 | 40.2 | 12 |
| EP3020 | EPG3020 | 28.2 | 18.2 | 12 |

| Mild Steel Part No. | Galvanized Part No. | Size | | |
|---------------------|---------------------|------|------|-------|
| | | D | E | Gauge |
| EP3024 | EPG3024 | 28.2 | 22.2 | 12 |
| EP3030 | EPG3030 | 28.2 | 28.2 | 12 |
| EP3048 | EPG3048 | 28.2 | 46.2 | 12 |
| EP3060 | EPG3060 | 28.2 | 58.2 | 12 |
| EP3624 | EPG3624 | 34.2 | 22.2 | 12 |
| EP3630 | EPG3630 | 34.2 | 28.2 | 12 |
| EP3636 | EPG3636 | 34.2 | 34.2 | 12 |
| EP3648 | EPG3648 | 34.2 | 46.2 | 12 |
| EP3660 | EPG3660 | 34.2 | 58.2 | 12 |
| EP4236 | EPG4236 | 40.2 | 34.2 | 12 |
| EP4824 | EPG4824 | 46.2 | 22.2 | 12 |
| EP4836 | EPG4836 | 46.2 | 34.2 | 12 |
| EP6036 | EPG6036 | 58.2 | 34.2 | 12 |

For sizing, refer to master selection table...see page 38



Eclipse Swing Panel

- Hinged panel allows access to internally mounted equipment.
- 12 gauge steel construction.
- Slotted quarter turn latches provide closure.
- Adding optional locking quarter turn latches (Part Number EQTRL...see page 36) convert this to a dead front panel.
- Complete with 4-6" depth adjustment channels.
- Hardware kit maintains UL, CSA and NEMA ratings when field installed.
- Finished in white.



| Part No. | Fits Enclosure Size (A x B) |
|----------|-----------------------------|
| ESP1212 | 12 x 12 |
| ESP1612 | 16 x 12 |
| ESP1616 | 16 x 16 |
| ESP2016 | 20 x 16 |
| ESP2416 | 24 x 16 |
| ESP1620 | 16 x 20 |
| ESP2020 | 20 x 20 |
| ESP2420 | 24 x 20 |
| ESP3020 | 30 x 20 |
| ESP2024 | 20 x 24 |
| ESP2424 | 24 x 24 |
| ESP3024 | 30 x 24 |
| ESP3624 | 36 x 24 |
| ESP3030 | 30 x 30 |
| ESP3630 | 36 x 30 |
| ESP3636 | 36 x 36 |

For sizing, refer to master selection table...see page 38



Eclipse Replacement Hinge Pins

- These are supplied with enclosure but offered here as replacements should originals be misplaced.
- Packaged in quantities of 5.

| Part No. | Material |
|----------|-----------------------------|
| EPINS | Zinc plated steel hinge pin |
| EPINSS | Stainless steel hinge pin |

Eclipse Series - NEMA 4, 12

Accessories



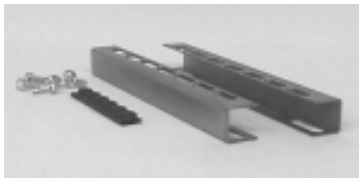
Eclipse Swing Frame

- Provides 19" rack mounting with full EIA spacing (punched holes).
- Hinges allow easy equipment access.
- Slotted quarter turn latches provide closure.
- Adding optional locking quarter turn latches (**EQTRL**...see page 36) provides added security.

- Complete with 4-6" depth adjustment channels.
- Order package of 25 clip nuts separately (Part No. **1421N25**...see page 387).
- Hardware kit maintains UL, CSA and NEMA ratings when field installed.
- Finished in black.

| Part No. | Fits Enclosure Size (A x B) | Rack Spacing Width | Rack Spacing Height (Units) |
|----------------|-----------------------------|--------------------|-----------------------------|
| ESF2424 | 24 x 24 | 19 | 11 |
| ESF3024 | 30 x 24 | 19 | 14 |
| ESF3624 | 36 x 24 | 19 | 17 |

For sizing, refer to master selection table...see page 38

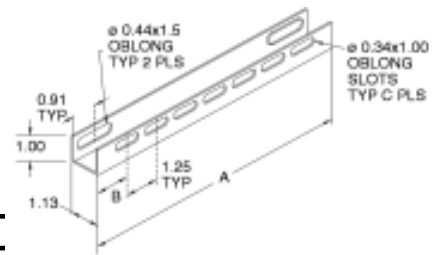


DIN Rail Mounting Kit

- Field installable.
- Mounts directly to panel collar studs (panel not required).
- Accepts optional DIN rails, see below.
- DIN rails available separately.
- Zinc plated, yellow dichromate.

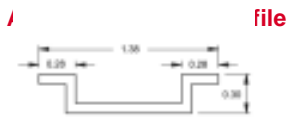
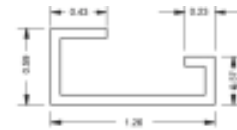
| Part No. | A | B | C |
|---------------|----|------|----|
| 2DMK12 | 10 | 1.25 | 7 |
| 2DMK16 | 14 | 0.75 | 11 |
| 2DMK20 | 18 | 0.88 | 14 |
| 2DMK24 | 22 | 1.00 | 17 |
| 2DMK30 | 28 | 0.88 | 22 |

For sizing, refer to master selection table...see page 38



DIN Rails

- Field installable.
- Includes a set of 3 plated rails.
- Available in 3 industry standard profiles - DIN 1, DIN 3, and CENELEC.
- DIN rail mounting kit required for installation (see above).
- Rails have a 0.28 x 1.25 oblong slot on each end.
- Zinc plated, yellow dichromate.



CENELEC Profile

| Asymmetric Din 1 Profile Part No. | Symmetric Din 3 Profile Part No. | Cenelec Profile Part No. | Length |
|-----------------------------------|----------------------------------|--------------------------|--------|
| 2D1K12 | 2D2K12 | 2DCK12 | 9.25 |
| 2D1K16 | 2D2K16 | 2DCK16 | 13.25 |
| 2D1K20 | 2D2K20 | 2DCK20 | 17.25 |
| 2D1K24 | 2D2K24 | 2DCK24 | 21.25 |
| 2D1K30 | 2D2K30 | 2DCK30 | 27.25 |

For sizing, refer to master selection table...see page 38

Eclipse Series- NEMA 4, 12

Accessories



Quarter Turn Inserts and Keys

- Field installable inserts replace standard quarter turn slot.
- Available in 7mm square and triangle formats, as well as slotted.
- Square and triangle inserts provide extra security since standard screw drivers cannot open.
- Keys sold separately from inserts.
- Maintains NEMA, UL and CSA 12, 4 and 4X ratings.

| Part No. | Description |
|--------------|------------------------------|
| 2SQI7 | 7mm square insert, black |
| 2SQK7 | 7mm square key, fits 2SQI7 |
| 2TRI7 | 7mm triangle insert, black |
| 2TRK7 | 7mm triangle key, fits 2TRI7 |
| 2SLI | Slotted insert, black |



Replacement Quarter Turn Assemblies

- Field installable.
- Interchangeable with standard quarter turn latches.
- Maintains NEMA, UL and CSA ratings as noted.

| Part No. | Description | Material | NEMA Rating |
|--------------------------|--------------------------------|-----------------|-------------------------|
| EQTRL¹ | Locking Qtr Turn | Zinc Die/Chrome | n/a (internal use only) |
| 2QTR | Slotted Qtr Turn | Zinc Die/Black | 12, 4 |
| 2SSQTR | Slotted Qtr Turn | Stainless steel | 12, 4, 4X |
| 2WKL | Wing knob lock | Zinc Die/Black | 12, 4 |
| 2QPL | Padlockable quarter turn latch | Zinc Die/Black | 12, 4 |

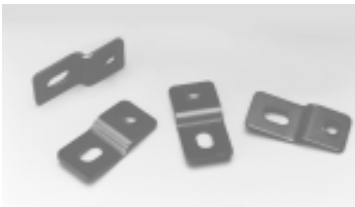
¹ For use with Swing Frame/Panel. ...see page 35. All others for use with enclosures.



Handles

- Field installable.
- Interchangeable with standard quarter turn latches.
- Maintain NEMA, UL and CSA ratings as noted.

| Part No. | Description | Material | NEMA Rating |
|----------------|----------------------|-----------------|-------------|
| EHTL | Locking T Handle | Zinc Die/Black | 12, 4 |
| EHL | Locking L Handle | Zinc Die/Black | 12, 4 |
| EHLPL | Padlockable L Handle | Zinc Die/Black | 12 |
| EHLPLSS | Padlockable L Handle | Stainless Steel | 12, 4, 4X |
| EHLNLSS | Non Locking L Handle | Stainless Steel | 12, 4, 4X |



Eclipse Mounting Foot Kit

- Maintains UL, CSA and NEMA ratings.
- Field installable.
- Pilot sits squarely into enclosure mounting holes for horizontal or vertical positioning.
- Available in plated black and stainless steel.
- Packaged in quantities of four.

| Part No. | Material |
|---------------|--------------------|
| EZPMF | Mild Steel |
| ESSMF | Type 304 Stainless |
| ES16MF | Type 316 Stainless |

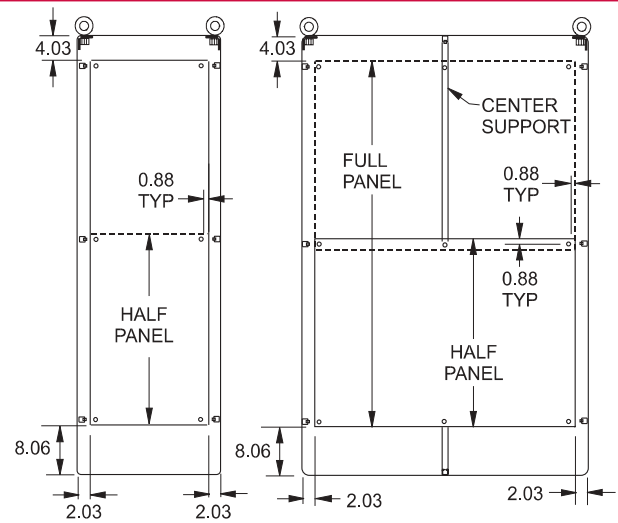


1418 Series Freestanding Enclosures - NEMA 4, 12

Accessories

Inner Panels

- Formed from 10 gauge or 12 gauge steel.
- All double door width panels are 10 gauge steel.
- Width panels are available in full or half height.
- Depth panels are available in full height only.
- Depth and width panels are provided with all mounting hardware and center support where required.
- Half panel can be mounted in the top or bottom half of the enclosure.
- Finished in white.



**Front View
Single Door**

**Front View
Double Door**

Depth Panels

Side Mounted Panels for Single and Double Door Enclosures

| Part No. | Encl. Height | Panel Width | Panel Height |
|----------|--------------|-------------|--------------|
| 60FD14 | 60 | 14 | 48 |
| 72FD9 | 72 | 9 | 60 |
| 72FD14 | 72 | 14 | 60 |
| 72FD20 | 72 | 20 | 60 |
| 72FD26 | 72 | 26 | 60 |
| 90FD9 | 90 | 9 | 78 |
| 90FD14 | 90 | 14 | 78 |
| 90FD20 | 90 | 20 | 78 |
| 90FD26 | 90 | 26 | 78 |

Double Door Width Panels

| Part No. | Description | Enclosure | Panel Size |
|----------|-------------|-----------|------------|
| 60AWFW | Full Panel | 60 x 48 | 48.00 x 44 |
| 60AWHW | Half Panel | | 24.88 x 44 |
| 72ZFW | Full Panel | 72 x 48 | 60.00 x 44 |
| 72ZHW | Half Panel | | 30.88 x 44 |
| 72ZFW | Full Panel | 72 x 60 | 60.00 x 56 |
| 72ZHW | Half Panel | | 30.88 x 56 |
| 72ZFW | Full Panel | 72 x 72 | 60.00 x 68 |
| 72ZHW | Half Panel | | 30.88 x 68 |
| 90BFW | Full Panel | 90 x 48 | 78.00 x 44 |
| 90BHW | Half Panel | | 39.88 x 44 |
| 90BFW | Full Panel | 90 x 72 | 78.00 x 68 |
| 90BHW | Half Panel | | 39.88 x 68 |

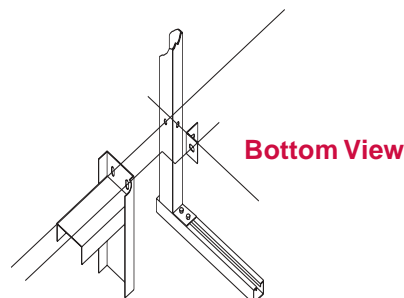
Single Door Width Panels

| Part No. | Description | Enclosure | Panel Size |
|----------|-------------|-----------|------------|
| 60TFW | Full Panel | 60 x 24 | 48.00 x 20 |
| 60TWH | Half Panel | | 24.87 x 20 |
| 72TFW | Full Panel | 72 x 24 | 60.00 x 20 |
| 72TWH | Half Panel | | 30.87 x 20 |
| 90YFW | Full Panel | 90 x 24 | 78.00 x 20 |
| 90YWH | Half Panel | | 39.87 x 20 |
| 72XFW | Full Panel | 72 x 30 | 60.00 x 26 |
| 72XHW | Half Panel | | 30.87 x 26 |
| 60TYFW | Full Panel | 60 x 36 | 48.00 x 32 |
| 60TYHW | Half Panel | | 24.87 x 32 |
| 72YFW | Full Panel | 72 x 36 | 60.00 x 32 |
| 72YHW | Half Panel | | 30.87 x 32 |
| 90YFW | Full Panel | 90 x 36 | 78.00 x 32 |
| 90YHW | Half Panel | | 39.87 x 32 |

1418 CS Series Center Panel Supports

- Adapts panels, swing frames, and panel rails from single door enclosures so they can be used on double door enclosures.
- Suitable for single or dual access double door enclosures.
- Center panel support mounts into front to back mounting channels (top and bottom) found in two door enclosures.
- Allows a combination of two 20" panels in a 48" wide enclosure, two 26" panels in a 60" wide enclosure, or two 32" panels in a 72" wide enclosure.
- Width is adjustable from 1.91" to 2.34".
- Support may be positioned at any depth within the enclosure.
- Finished in white.

| Part No. | Enclosure Ht. |
|----------|---------------|
| 1418ACS | 60 |
| 1418ZCS | 72 |
| 1418BCS | 90 |



Bottom View

1418 Series Freestanding Enclosures - NEMA 4, 12

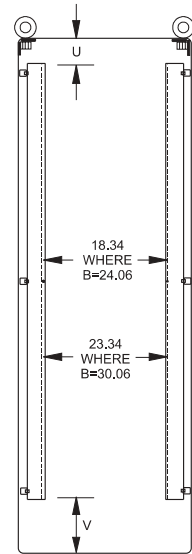
Accessories

Panel Rails

- Provides 19" or 24" mounting capability.
- Sold in **pairs**.
- Formed from 10 gauge steel.
- Drilled and tapped 10-32 to EIA spacing of 0.5" - 0.63" - 0.63" - 0.5".
- Finished in white.

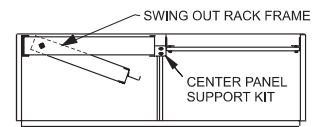
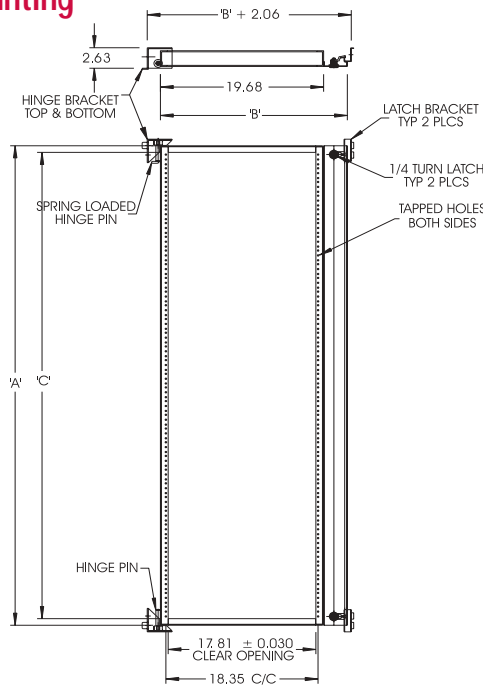


| Part No. | Panel Description | Angle Enclosure | Width | Panel Height | U | V |
|----------|-------------------|-----------------|-------|--------------|------|------|
| 1418TFHP | Full Height | 60 x 24 | 19 | 49.00 | 3.78 | 7.78 |
| 1418THHP | Half Height | | | 26.25 | 3.59 | 7.59 |
| 1418WFHP | Full Height | 72 x 24 | 19 | 61.25 | 3.66 | 7.66 |
| 1418WHHP | Half Height | | | 31.50 | 3.97 | 7.67 |
| 1418XFHP | Full Height | 72 x 30 | 24 | 61.25 | 3.66 | 7.66 |
| 1418XHHP | Half Height | | | 31.50 | 3.97 | 7.67 |
| 1418YFHP | Full Height | 90 x 24 | 19 | 78.75 | 3.91 | 7.91 |
| 1418YHHP | Half Height | | | 40.25 | 4.09 | 8.09 |



Swing Out Frames For 19" Rack Mounting

- Formed from 10 gauge steel, frames are drilled and tapped to EIA requirements for mounting standard 19" rack accessories.
- Designed for installation in 72" and 90" high enclosures. The swing frame pivots on 0.5" pins within the enclosure for easy access to the rear of rack mounted equipment.
- The frame positions at any depth within the enclosure and is fastened in the closed position with quarter turn fasteners.
- Swing frames may be mounted in 30" and 36" wide enclosures, or in 60" and 72" wide enclosures with an optional center panel support...see page 64.
- One or two frames may be mounted in 30" and 36" wide enclosures with dual access, and 1,2,3 or 4 frames may be mounted in 60" and 72" wide dual access enclosures.
- Finished in black.



Section View from Top of Cabinet

| Part No. | A | B | C | D | E | Enclosure Height | Width Single Door | Width Double Door | Center Support |
|----------|-------|-------|------|------|-------|------------------|-------------------|-------------------|----------------|
| 1418SFYY | 87.86 | 33.72 | 4.28 | 78.5 | 75.31 | 90 | 36 | 72 | 1418 BCS |
| 1418SFY | 69.86 | 33.72 | 4.28 | 60.5 | 57.81 | 72 | 36 | 72 | 1418 ZCS |
| 1418SFX | 69.86 | 27.72 | 4.28 | 60.5 | 57.81 | 72 | 30 | 60 | 1418 ZCS |

Note: When using a swing out frame on a double door enclosure, a Center Panel Support must also be used and ordered separately...see previous page.

Industrial Enclosures
Freestanding Enclosures

Series 2000 - NEMA 4 Accessories

Series 2000 Inner Panel

- 12 gauge steel.
- Larger panels have two or four formed flanges.
- Some larger panels are 10 gauge.
- Hardware to mount inner panels is included with Series 2000 enclosures.
- Finished in white.

| Part No. | Height | Width |
|----------|--------|-------|
| 18P0909 | 9 | 9 |
| 18P1309 | 13 | 9 |
| 18P1313 | 13 | 13 |
| 18P1713 | 17 | 13 |
| 18P1717 | 17 | 17 |
| 18P2113 | 21 | 13 |
| 18P2117 | 21 | 17 |
| 18P2121 | 21 | 21 |
| 18P2717 | 27 | 17 |

| Part No. | Height | Width |
|----------|--------|-------|
| 18P2721 | 27 | 21 |
| 18P2727 | 27 | 27 |
| 18P3321 | 33 | 21 |
| 18P3327 | 33 | 27 |
| 18P3933 | 39 | 33 |
| 18P4521 | 45 | 21 |
| 18P4533 | 45 | 33 |

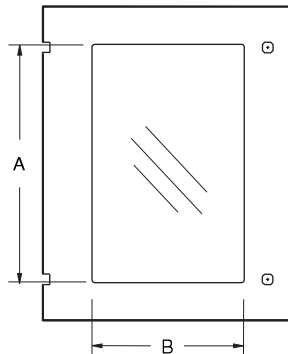
For sizing, refer to master selection table...see page 46.

Industrial Enclosures
Wallmount Enclosures



Window Door

- Lexan window doors are field installable
- Maintains NEMA rating.
- Use mounting hardware supplied with standard door to install window door.



Type 4

| Part No. | A | B |
|----------|-------|-------|
| 2PW1212 | 5.25 | 5.25 |
| 2PW1612 | 9.25 | 5.25 |
| 2PW1616 | 9.25 | 9.25 |
| 2PW1620 | 9.25 | 13.25 |
| 2PW2016 | 13.25 | 9.25 |
| 2PW2020 | 13.25 | 13.25 |
| 2PW2024 | 12.75 | 16.75 |
| 2PW2416 | 16.75 | 8.75 |
| 2PW2420 | 16.75 | 12.75 |
| 2PW2424 | 16.75 | 16.75 |
| 2PW3020 | 22.75 | 12.75 |
| 2PW3024 | 22.25 | 16.25 |
| 2PW3030 | 22.25 | 22.25 |
| 2PW3624 | 28.25 | 16.25 |
| 2PW3630 | 28.25 | 22.25 |
| 2PW4236 | 34.25 | 28.25 |
| 2PW4824 | 40.25 | 16.25 |
| 2PW4836 | 40.25 | 28.25 |

For sizing, refer to master selection table...see page 46.



Depth Extension Ring Kit

- Formed 14 gauge steel.
- Adds 8 inches to enclosure depth.
- Maintains NEMA rating (silicone seal is required to maintain rating - not supplied).
- Type 4 finished in gray.

Type 4

| Part No. | A | B |
|----------|----|----|
| 2PX2024 | 20 | 24 |
| 2PX2424 | 24 | 24 |
| 2PX3024 | 30 | 24 |
| 2PX3624 | 36 | 24 |
| 2PX3630 | 36 | 30 |

For sizing, refer to master selection table...see page 46.

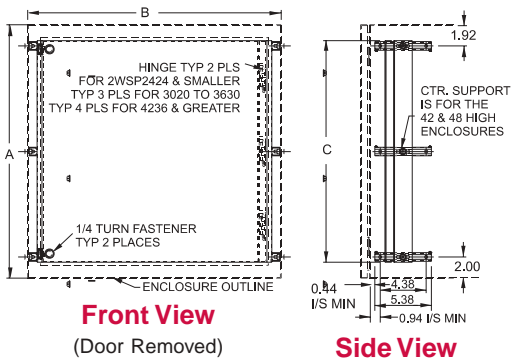
Series 2000 - NEMA 4 Accessories

Industrial Enclosures
Wallmount Enclosures

Swing Panel

- Hinged panel allows access to internally mounted equipment.
- Slotted quarter turn latches provide closure.
- 12 gauge steel construction.
- Adding optional locking quarter turn latches (Part Number **EQTRL**...see page 45) convert this to a dead front panel.
- Complete with 4-6" depth adjustment channels.
- Hardware kit maintains UL, CSA and NEMA ratings when field installed.
- Finished in white.

| Part No. | A | B | C | D |
|----------|----|----|----|-------|
| 2WSP1212 | 12 | 12 | 9 | 9.29 |
| 2WSP1612 | 16 | 12 | 13 | 9.29 |
| 2WSP1616 | 16 | 16 | 13 | 13.29 |
| 2WSP1620 | 16 | 20 | 13 | 17.29 |
| 2WSP2016 | 20 | 16 | 17 | 13.29 |
| 2WSP2020 | 20 | 20 | 17 | 17.29 |
| 2WSP2024 | 20 | 24 | 17 | 21.29 |
| 2WSP2416 | 24 | 16 | 21 | 13.29 |
| 2WSP2420 | 24 | 20 | 21 | 17.29 |
| 2WSP2424 | 24 | 24 | 21 | 21.29 |
| 2WSP3020 | 30 | 20 | 27 | 17.29 |
| 2WSP3024 | 30 | 24 | 27 | 21.29 |
| 2WSP3030 | 30 | 30 | 27 | 27.29 |
| 2WSP3624 | 36 | 24 | 33 | 21.29 |
| 2WSP3630 | 36 | 30 | 33 | 27.29 |
| 2WSP4236 | 42 | 36 | 39 | 33.29 |
| 2WSP4824 | 48 | 24 | 45 | 21.29 |
| 2WSP4836 | 48 | 36 | 45 | 33.29 |



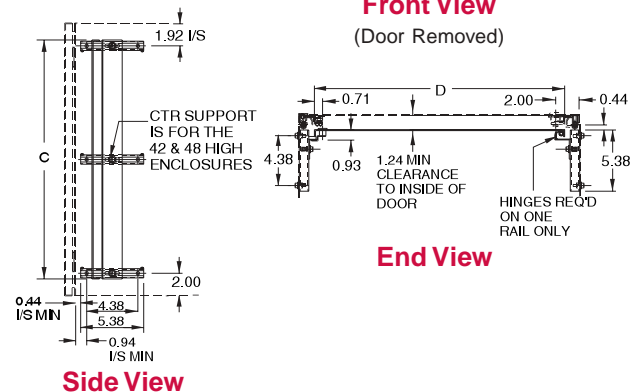
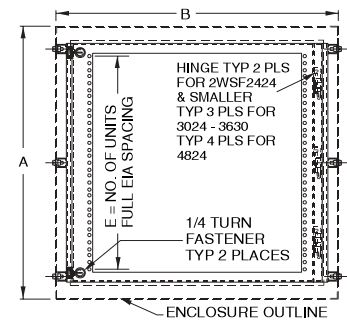
For sizing, refer to master selection table...see page 46.

Swing Frame

- Provides 19" or 24" rack mounting with full EIA spacing (punched holes).
- Hinges allow easy equipment access.
- Slotted quarter turn latches provide closure.
- Adding optional locking quarter turn latches (**EQTRL**...see page 45) provides added security.
- Complete with 4-6" depth adjustment channels.
- Order package of 25 clip nuts separately (Part No. **1421N25**...see page 381).
- Hardware kit maintains UL, CSA and NEMA ratings when field installed.
- Finished in black.

| Part No. | A | B | C | D | E | Rack Mt. |
|----------|----|----|----|-------|----|----------|
| 2WSF2024 | 20 | 24 | 17 | 21.29 | 9 | 19" |
| 2WSF2424 | 24 | 24 | 21 | 21.29 | 11 | 19" |
| 2WSF3024 | 30 | 24 | 27 | 21.29 | 15 | 19" |
| 2WSF3030 | 30 | 30 | 27 | 27.29 | 15 | 24" |
| 2WSF3624 | 36 | 24 | 33 | 21.29 | 17 | 19" |
| 2WSF3630 | 36 | 30 | 33 | 27.29 | 17 | 24" |
| 2WSF4824 | 48 | 24 | 45 | 21.29 | 25 | 19" |

For sizing, refer to master selection table...see page 46.



Series 2000- NEMA 4

Accessories

Industrial Enclosures
Wallmount Enclosures

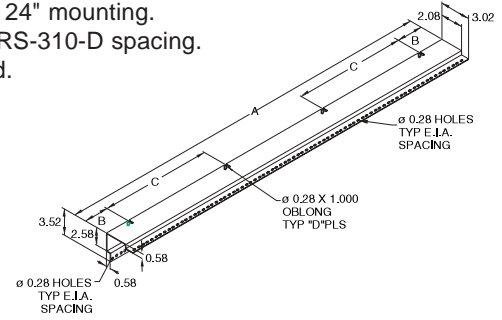


Fixed Rack Mounting Kit

- Formed 14 gauge steel.
- Reversible angles provide for mounting of 19" or 24" rack equipment.
- 24" overall width enclosure allows 19" mounting, 30" overall width enclosure allows 19 or 24" mounting.
- 0.28" diameter holes with standard RS-310-D spacing.
- Field installable - no drilling required.
- Finished in black.

| Part No. | A | B | C | D |
|----------|-------|------|-------|---|
| 2FR20 | 17.50 | 3.00 | — | 2 |
| 2FR24 | 21.00 | 2.75 | — | 2 |
| 2FR30 | 28.00 | 3.25 | — | 3 |
| 2FR36 | 33.25 | 2.88 | — | 3 |
| 2FR48 | 45.50 | 3.00 | 13.67 | 4 |

Part No. reflects overall height of enclosure.

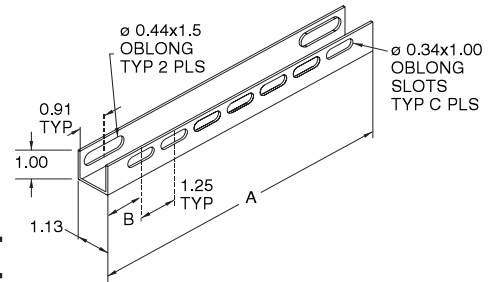


DIN Rail Mounting Kit

- Field installable.
- Mounts directly to panel collar studs (panel not required).
- Accepts optional DIN rails (see below).
- DIN rails available separately.
- Finished in black.

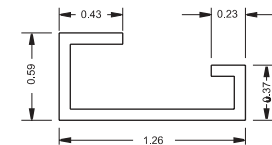
| Part No. | A | B | C |
|----------|----|------|----|
| 2DMK12 | 10 | 1.25 | 7 |
| 2DMK16 | 14 | 0.75 | 11 |
| 2DMK20 | 18 | 0.88 | 14 |
| 2DMK24 | 22 | 1.00 | 17 |
| 2DMK30 | 28 | 0.88 | 22 |

For sizing, refer to master selection table...see page 46.

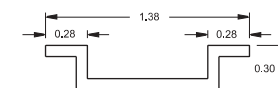


DIN Rails

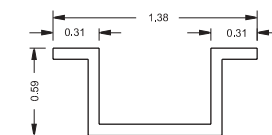
- Field installable.
- Includes a set of 3 plated rails.
- Available in 3 industry standard profiles - DIN 1, DIN 3, and GENELEC.
- DIN rail mounting kit required for installation (see above).
- Rails have a 0.28 x 1.25 oblong slot on each end.
- Finished in black.



Asymmetric DIN 1 Profile



Symmetric DIN 3 Profile



GENELEC Profile

| Asymmetric Din 1 Profile Part No. | Symmetric Din 3 Profile Part No. | Cenelec Profile Part No. | Length |
|-----------------------------------|----------------------------------|--------------------------|--------|
| 2D1K12 | 2D2K12 | 2DCK12 | 9.25 |
| 2D1K16 | 2D2K16 | 2DCK16 | 13.25 |
| 2D1K20 | 2D2K20 | 2DCK20 | 17.25 |
| 2D1K24 | 2D2K24 | 2DCK24 | 21.25 |
| 2D1K30 | 2D2K30 | 2DCK30 | 27.25 |

For sizing, refer to master selection table...see page 46.



Quarter Turn Inserts and Keys

- Field installable inserts replace standard slot.
- Available in 7mm square and triangle formats, as well as slotted.
- Square and triangle inserts provide extra security since standard screw drivers cannot open.
- Keys sold separately from inserts.
- Maintains NEMA, UL and CSA 12, 4 and 4X ratings.

| Part No. | Description |
|----------|------------------------------|
| 2SQI7 | 7mm square insert, black |
| 2SQK7 | 7mm square key, fits 2SQI7 |
| 2TRI7 | 7mm triangle insert, black |
| 2TRK7 | 7mm triangle key, fits 2TRI7 |
| 2SLI | Slotted insert, black |



Replacement Quarter Turn Assemblies

- Field installable.
- Interchangeable with standard quarter turn latches.
- Maintains NEMA, UL and CSA ratings as noted.

| Part No. | Description | Material | NEMA Rating |
|--------------------|--------------------------------|-----------------|-------------------------|
| EQTRL ¹ | Locking Qtr Turn | Zinc Die/Chrome | n/a (internal use only) |
| 2QTR | Slotted Qtr Turn | Zinc Die/Black | 12, 4 |
| 2SSQTR | Slotted Qtr Turn | Stainless steel | 12, 4, 4X |
| 2WKL | Wing knob lock | Zinc Die/Black | 12, 4 |
| 2QPL | Padlockable quarter turn latch | Zinc Die/Black | 12, 4 |

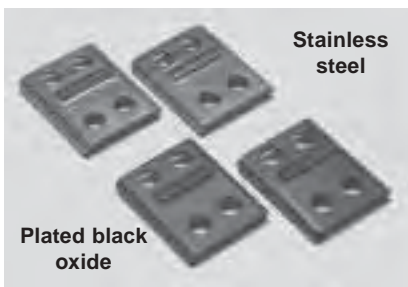
¹ For use with Swing Frame/Panel. ..see page 43. All others for use with enclosures.



Handles

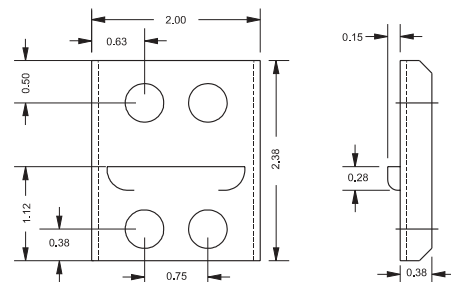
- Field installable.
- Interchangeable with standard quarter turn latches.
- Maintain NEMA, UL and CSA ratings as noted.

| Part No. | Description | Material | NEMA Rating |
|----------|----------------------|-----------------|-------------|
| EHTL | Locking T Handle | Zinc Die/Black | 12, 4 |
| EHLL | Locking L Handle | Zinc Die/Black | 12, 4 |
| EHLPL | Padlockable L Handle | Zinc Die/Chrome | 12 |
| EHLPLSS | Padlockable L Handle | Stainless Steel | 12, 4, 4X |
| EHLNLSS | Non Locking L Handle | Stainless Steel | 12, 4, 4X |



Series 2000 Mounting Foot Kit

- Field installable.
- Available in plated black oxide and stainless steel.
- Packaged in quantities of four.
- Maintains NEMA, UL and CSA Type rating as shown.



| Part No. | Material | For Nema Rating |
|----------|-------------------|------------------------|
| 2ZPMF | Steel black oxide | NEMA 12,13 |
| 2SSMF | Stainless steel | NEMA 3R, 4, 4X, 12, 13 |