



POINTED

Dimensions

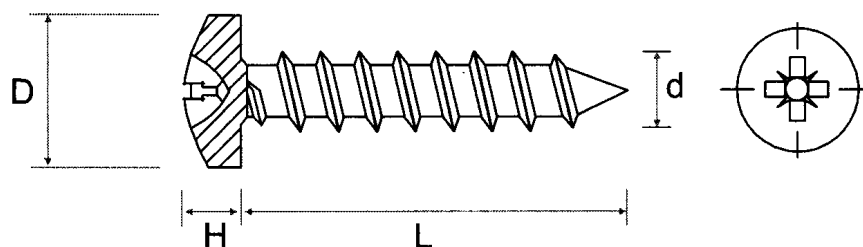
DIN 7981 C Z

BS 4174 AB

Materials / Finishes:

Stainless steel / Self colour

Other materials and finishes available on request



d	2.2	2.9	3.5	3.9	4.2	4.8	5.5	6.3
d	No.2	No.4	No.6		No.8	No.10	No.12	No.14
D max	4.2	5.6	6.9	7.5	8.2	9.5	10.8	12.5
H max	1.8	2.2	2.6	2.8	3.05	3.55	3.95	4.55
Recess No.	1	1	2	2	2	2	3	3

Preferred sizes - Stainless steel

d	2.2	2.9	3.5	3.9	4.2	4.8	5.5	6.3
L	4.8							
	6.4	TR	TR	TR				
	7.9	TR	TR	TR				
	9.5	TR	TR	TR				
	12.7	TR	TR	TR	TR			
	15.9		TR	TR	TR	TR		
	19			TR	TR	TR		
	22.2							
	25.4		TR	TR		TR	TR	
	31.8			TR		TR	TR	
	38					TR	TR	
	44.5					TR	TR	
50.8					TR	TR		