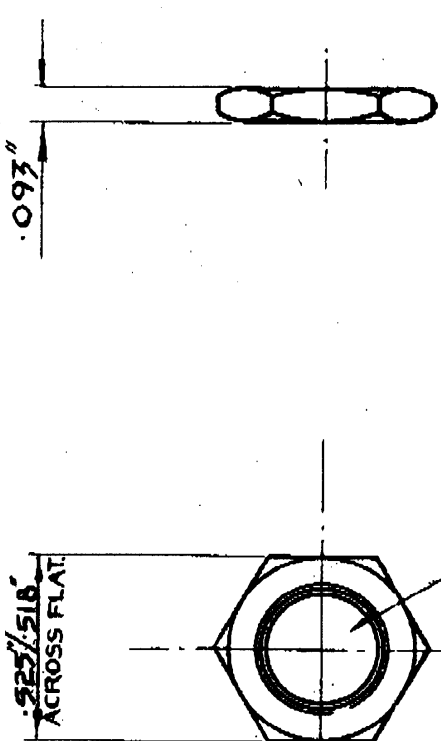


DRG. No.  
**N.602 ETC.**

FIRST ANGLE PROJECTION — N.768A(ED) 1/2

ALTERATIONS

ISS.	C.R.No.	ALTERATION	SIG & DATE
4	—	RE-DRAWN NO CHANGE	SEA 12.5.52
5	2056	SPEC. ADDED TO THREAD	3.6.52
6	—	RE-DRAWN NO CHANGE	FED 1.2.51
7	—	RE-DRAWN NO CHANGE	FED 1.2.51
8	7803	5/16" DIA WAS 5/8"	10.12.50
9	8470	FINISH TO SF. 004	10.12.50
10	8659	NICKEL PLATE TO SF. 004	10.12.50
11	8683	RE-DRAWN TO SF. 003	4.11.50



THREAD TO B.S. 84 (MED)  
 .375" DIA. SEE TABLE  
 FOR T.P.I. SLIGHTLY C/SK.  
 HOLE.

SUGGESTED TIGHTENING  
 TORQUE 35 lb ft

PART NO	THREAD	MATERIAL	FINISH
N.602	32 T.P.I.	BRASS	NICKEL PLATE
N.602 A.	26 T.P.I.	BRASS	NICKEL PLATE
N.602 D	32 T.P.I.	DURALUMIN	CLEAN
N.602 AD	26 T.P.I.	DURALUMIN	CLEAN
N.656	32 T.P.I.	DURALUMIN	NICKEL TO COLVERN'S SPEC SF.005
N.676	26 T.P.I.	BRASS	NICKEL PLATE TO SF. 003
N.685	32 T.P.I.	MILD STEEL	NICKEL PLATE TO SF. 002
N.695	32 T.P.I.	DURALUMIN	ANNEAL TO COLVERN'S SPEC SF.004
N.697	32 T.P.I.	BRASS	ELECTRO-TIN D.T.D. 924
N.697A	26 T.P.I.	BRASS	ELECTRO-TIN D.T.D. 924
N.722	32 T.P.I.	BRASS	CLEAN PLATE TO COLVERN'S SPEC SF.005
N.768	32 T.P.I.	BRASS	CLEAN TO SF.011

REDRAWN	CHECKED	APPROVED	DATE
F. E. D.	J.S.		3.2.61

MATERIAL: SEE TABLE  
 FINISH: SEE TABLE

TITLE: 375 LOCK NUT  
 DRG. No. N.602 ETC.

USED ON: COLVERN LTD., MAWNEYS RD., ROMFORD

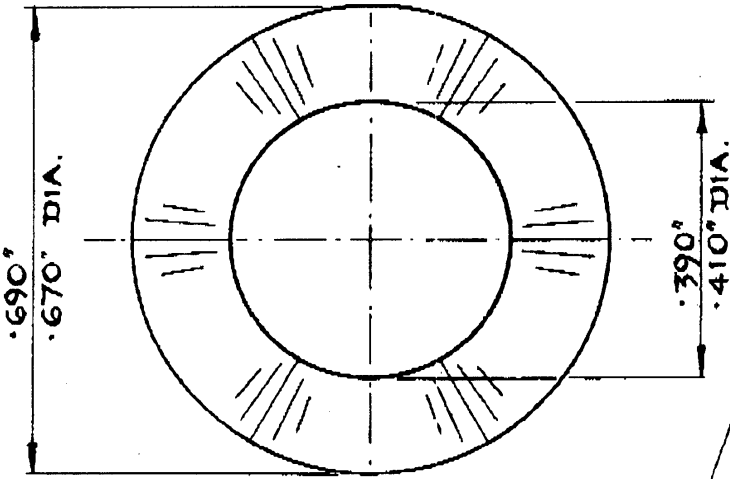
TOLERANCES  
 FRACTIONS: ± .001  
 UNLESS OTHERWISE STATED

SCALE 2:1

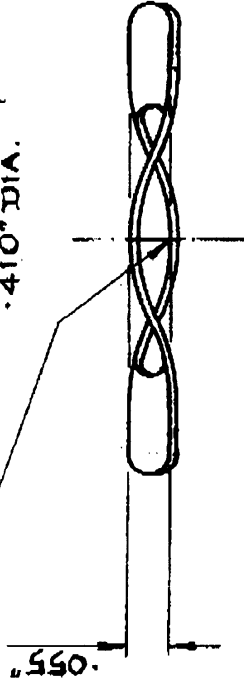
DIMENSIONS IN INCHES

PART No.  
**W.1015**

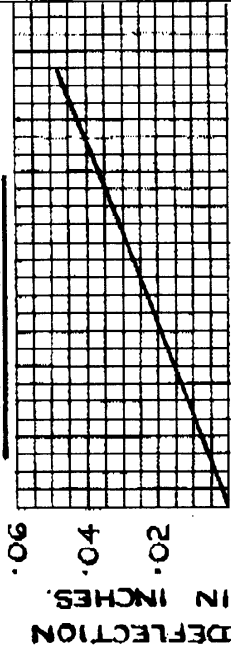
FIRST ANGLE PROJECTION



3- CORRUGATIONS  
EQUALLY SPACED.  
CURVATURE OF  
CRESTS & TROUGHS  
TO BE EQUAL.



SPRING DATA.



LOAD IN POUNDS ± 10%

ALTERATIONS		SIG. & DATE
ISS.	C.N. No.	
4	8171	ALTERNATIVE MAT'T DELETED 10-6-78
5	8889	ROUTE WAS PD 10-2-80

DRAWN	CHECKED	APPROVED	DATE
F. E. D.			16-1-78

MATERIAL: .0108" THK (32- SWG) PHOS. BRONZE FINISH: NICKEL PLATE.

JULIE W. 1015 PART No.

USED ON: 3/8 WAVY WASHER W. 1015

COLVERN LTD., ROMFORD, ESSEX.

JOINT SERVICE CAT.

NE 5310-Z-119097

DIMENSIONS IN INCHES

SCALE

4:1

TOLERANCES

DECIMALS: ± .005"  
FRACTIONS: ± 1/64"

UNLESS OTHERWISE STATED

CAF 450074

SCRAP

P. 8. E. 1015 760

1 2 3 4 5 6 7 8 9 10

DRG. NO.

W901 - 3  
W1193 - 3

THIRD ANGLE PROJECTION



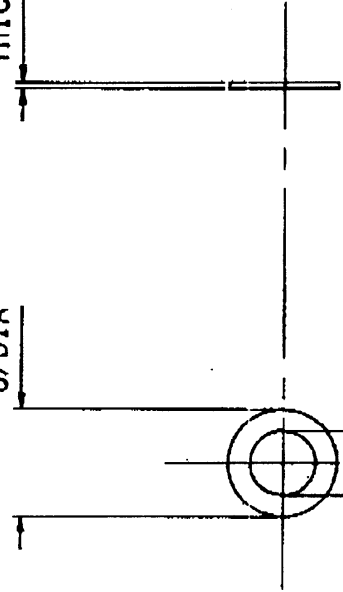
DO NOT SCALE

IF IN DOUBT ASKI

SEE TABLE FOR THICKNESS

.625" O/DIA

.375" I/DIA



PART No.	THICKNESS
W.901-3	.032" (21 SWG.)
W.1193-3	.040" (19 SWG.)

GAUGING DIMENSIONS IDENTIFIED BY THIS SYMBOL



© 1993 COLVERN LTD. THIS DRAWING IS THE PROPERTY OF COLVERN LTD. WITHOUT WHOSE WRITTEN PERMISSION IT MUST NOT BE COPIED, REPRODUCED, REISSUED OR DISCLOSED TO A THIRD PARTY.

C.A.D. DRAWING. ANY ALTERATIONS MUST BE CARRIED OUT ON THE C.A.D. SYSTEM ONLY

DIMENSIONS IN INCHES

TOLERANCES

DECIMALS +/- .005"  
FRACTIONS +/- 1/64"  
ANGLES +/- 1°

UNLESS OTHERWISE STATED

ROUTE MATERIAL

B.O.

SCALE

PT760

TOOL No.

OPERATION

ORIGINALLY USED ON 3.4.5.6000 R.

FINISH

BRIGHT ZINC PLATE & CLEAR PASSIVATE

TITLE

3/8" WASHER

MILD STEEL

D.V.N.

DATE

18/8/93

CHK/APP

ROMFORD

ESSEX

DRG. NO. W901 - 3

W1193 - 3

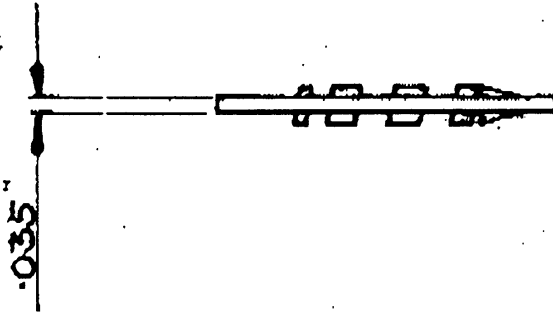
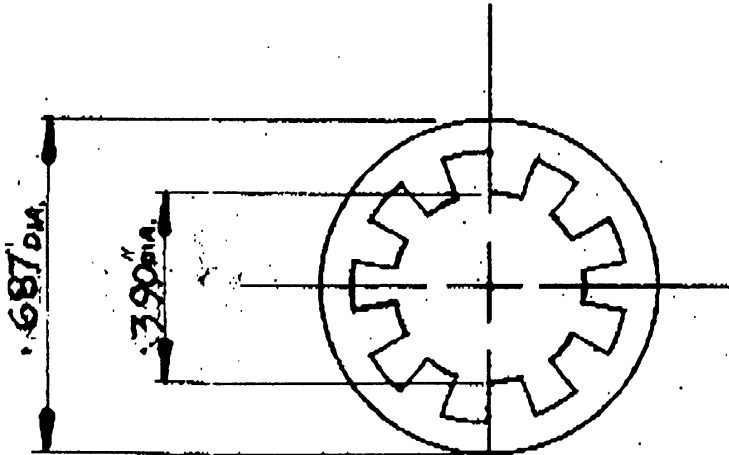
GEOMETRIC TOLERANCE SYMBOLS

STRAIGHTNESS	-	SQUARENESS	⊥
FLATNESS	▭	ANGULARITY	∠
ROUNDNESS	○	RUNOUT	↗
CYLINDRICITY	⊘	POSITION	⬠
LINE PROFILE	⌒	CONCENTRICITY	◎
SURFACE PROFILE	⌒	SYMMETRY	≡
PARALLELISH	//	M.M.C.	Ⓜ

ALTERATIONS

ISS. CH. No.	ALTERATION	DATE	CHKD.
3	MATERIAL WAS BURN - MICREL PLATE	18/8/93	

PART No.  
**W 902**



ISS. C.N. No.		ALTERATION		ISS. & DATE	
2	269	REBRAGUN UP TO DATE		10/6/52	
3	296	FINISHED WITH ZINC PLATE FINISH		11/1/52	

.063" over  
Teeth.  
per check  
on 10 samples

PURCHASED FROM BARBER COLMAN  
TYPE 12 - No 1220

GENERAL TOLERANCE = .005" SCALE  
UNLESS OTHERWISE STATED **2:1**

DRAWN	CHECKED	APPROVED	DATE
D. J. Wapling	ibeach	ibeach	28-1-52
MATERIAL: STEEL		FINISH: NICKEL PLATE	
TITLE 375 DIA. SHIMMERPROOF WASHER		PART No. W 902	
USED ON		COLVENE LTD. MAWNEYS RD, ROMFORD	