

Tool Clips – Closed Type

Terry Tool Clips are produced in high quality spring steel. They are produced according to industrial and professional users' demands but are also frequently used in the d-i-y sector. The closed type is our most popular clip, also available in an assortment box (code no. 80.00.6) for display and over-the-counter sales.

Terry Tool Clips are available in three surface finishes:

- Standard – zinc plated, 5µm thickness
- Black – nylon coated
- White – nylon coated

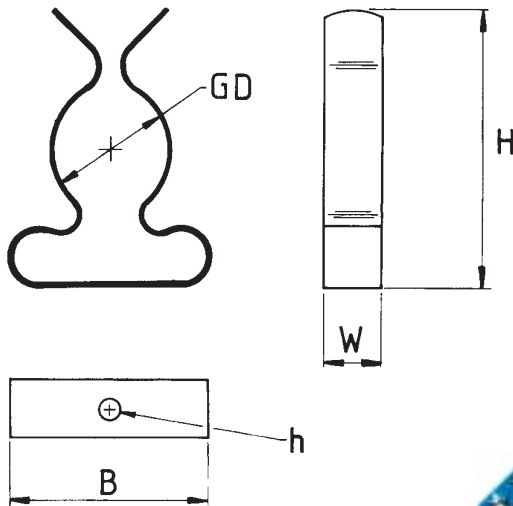
Dimensional allowance should be made for a reduction in hole size due to the nylon coating.

Grip Size dia (GD)	Working Range	Code No.			Height (H)	Width (W)	Breadth (B)	Hole (h)
		Zinc	Black	White				
6	6 - 7	80.06	84.06	86.06	15.3	6.35	12.9	2.4
10	10 – 12	80.10	84.10	86.10	20.0	6.35	15.5	2.4
13	13 – 14	80.13	84.13	86.13	26.4	7.94	20.1	3.2
16	16 – 19	80.16	84.16	86.16	32.2	7.94	22.6	3.2
19	19 – 21	80.19	84.19	86.19	36.4	7.94	25.3	3.2
25	25 – 27	80.25	84.25	86.25	40.3	9.52	28.8	3.2
28	28 – 31	80.28	84.28	86.28	48.7	9.52	34.1	3.6
32	32 – 34	80.32	84.32	86.32	59.3	11.11	42.8	3.6
38	38 – 40	80.38	84.38	86.38	67.0	12.70	49.5	*4.0
51	51 – 54	80.51	84.51	86.51	80.2	12.70	53.0	*4.0

*Code No. 80.38; 84.38; 86.38 – 2 holes at 8.0 mm centres.

*Code No. 80.51; 84.51; 86.51 – 2 holes at 12.7 mm centres.

For large order quantities, hole sizes can be altered and different finishes are available e.g. Chrome, Nickel, etc



Assortment 80.00.6 – toolclips

Grip size Ø (GD)	6	10	13	16	18	25	28	32	38
Number of pcs	50	50	70	80	50	50	20	20	20

+ 100 x 3/8" screw, + 431 x 1/2" screw

