

# SmartPoE/2402M

## 24 Port 10/100 Managed PoE Switch with 2 Gigabit Combo

### Features

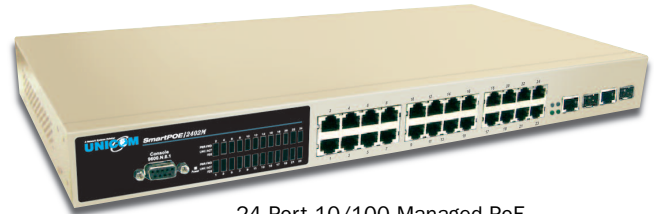
- Conforms to IEEE802.3 10BASE-T, 802.3u 100BASE-TX/FX, 802.3ab 1000BASE-T, 802.3z Gigabit fiber, 802.3af power over Ethernet
- Port Based VLAN /802 .1 Q Tag VLAN
- IEEE802.3x Flow control:
  - Flow control for full duplex
  - Back pressure for half duplex
- High back-plane bandwidth 8.8Gbps
- IEEE802.3ad Port trunk with LACP
- Rapid spanning tree IEEE802.1w
- Spanning tree protocol IEEE 802.1d
- IGMP snooping and IGMP Query mode for Multi-media applications
- IEEE 802.1p class of service
- Port mirror and bandwidth control
- IEEE 802.1x user authentication; TACACS+ (option)
- Supports GVRP function
- Broadcast storm filter
- End point insert mode remote power feeding
- DHCP client
- Provides extra DC 48V input with redundant function and management power status through RS-232 port
- Online extra power supply testing through RS-232 port
- Management by Web/SNMP/Telnet/Console
- Supports command line interface management
- System event log support
- SNMP support

### SEE BACK FOR FULL SPECIFICATIONS

The SmartPoE/2402M is a multi-port switch that can be used to build high-performance switched workgroup networks. This switch is a store-and-forward device that offers low latency for high-speed networking and features a "store-and-forward" switching scheme. This allows the switch to auto-learn and store source addresses in an 8K-entry MAC address table. The SmartPoE/802M is targeted at workgroup, department or backbone computing environments. The SmartPoE/802M has twenty-four auto-sensing 10/100Base-TX RJ-45 ports and all ports support the PoE injector function. The switch has two auto-detected Gigabit Combo ports for higher connection speed.

Also, the SmartPoE/2402M provides one extra 48VDC power input for the power supply input connection.

## Feeds PoE to up to 24 devices!



24 Port 10/100 Managed PoE Switch with 2 Gigabit Combo  
 POE-63226T

802.3af Compliant

PART NUMBER	DESCRIPTION
POE-63226T	24 Port 10/100 Managed PoE Switch w/ 2 Gigabit Combo
POE-DCP248	Twin DC 48V/400W output power supply*
POE-DCP148-UPS	Single DC 48V/400W output with UPS power supply*

**Notes:** \* The SmartPoE/2402M switch offers multiple solutions for your everyday needs. It comes equipped with an internal 200 watt power supply that can support up to 8.33 watts per port for up to 24 ports or 15.4 watts for up to 12 ports. If your solution requires the need for full 24 port PoE power, you can attach our optional Single DC 48V/400W (POE-DCP148-UPS) output power supply to give you the flexibility of full 24 port PoE power of up to 15.4 watts per port. In addition, if you need to power additional PoE switches, we offer a Dual DC 48V/400W output power supply (POE-DCP248) to power up to two extra PoE (PSE) devices.

## SPECIFICATIONS

<b>Standards:</b>	IEEE802.3 10BASE-T IEEE802.3u 100BASE-TX/100BASE-FX IEEE802.3z Gigabit SX/LX IEEE802.3ab Gigabit 1000T IEEE802.3x Flow Control and Back pressure IEEE802.3ad Port trunk with LACP IEEE802.1d Spanning tree protocol IEEE802.1w Rapid spanning tree protocol IEEE802.1p Class of service IEEE802.1Q VLAN Tagging IEEE 802.1x user authentication IEEE802.3af Power over Ethernet	<b>VLAN:</b>	Port based VLAN IEEE802.1Q Tag VLAN IEEE802.1v Protocol VLAN (IP, IPX,..) The static VLAN groups up to 256 and dynamic VLAN groups up to 2048, the VLAN ID can be assigned from 1 to 4094.
<b>Connector:</b>	10/100TX: 24 x RJ-45  <b>RJ-45 Pin assignment and polarity:</b> 1/2:RX signal and -48V DC; 3/6:TX signal and +48V DC	<b>Class of Service:</b>	Per system supports high and low queues. The priority service rule: first come first service, all High before Low, WRR for High or low weight.
<b>Gigabit Copper:</b>	2 x RJ-45, 2 MINI GBIC for MINI GBIC transceiver	<b>Port-based Priority:</b>	Support 3 settings: "Disable, Low or High priority". When set to "Disable", the income packet will follow QOS policy; Otherwise, the packet will follow port priority setting to "High/Low" queue.
<b>RS-232 connector:</b>	One RS-232 DB-9 female connector for switch management and 2 RS-232 DB-9 male connectors on rear side for DC power supply and UPS management	<b>IGMP:</b>	It supports IGMP snooping for multimedia application and supports 256 groups
<b>Remote Pwr Feeding:</b>	End-point insert type and compatible with IEEE802.3af <b>Per port feeding power:</b> 15.4Watts (maximum) <b>Switch architecture:</b> Store and forward switch architecture. Back-plane up to 8.8Gbps	<b>Port Security:</b>	It supports ingress and egress MAC address filter and static source MAC address lock.
<b>MAC address:</b>	8K MAC address table with Auto learning function	<b>Port Mirror:</b>	Global system supports 3 mirroring types: "RX, TX and Both packet". The maximum of port mirror entries is up to 25.
<b>Memory:</b>	3Mbits for packet buffer	<b>Bandwidth Control:</b>	Per port supports bandwidth control. Per level 100Kbps.
<b>Flash ROM:</b>	512Kbytes x 2	<b>802.1x Authentication:</b>	Support IEEE802.1x User-Authentication and can report to RADIUS server: Reject, Accept, Authorize, Disable
<b>System memory:</b>	8Mbytes x 1	<b>DHCP:</b>	DHCP client
<b>LEDs:</b>	System Power <b>10/100TX RJ-45 Port:</b> Link/Active (Green: 1000Mbps/ Yellow: 10/100Mbps), Full-duplex/collision <b>MINI GBIC/ Copper:</b> Link/Activity, Full duplex/collision, 1000Mbps, 100Mbps	<b>Packet filter:</b>	Broadcast storm filter
<b>Power:</b>	Embedded AC power supply: AC 100~240V, 50/60Hz, 200W	<b>System setup and control:</b>	System calibrate, AC power line frequency rejection, IEEE 802.3af resistor range adjust
<b>Extra power input:</b>	DC48V	<b>Port configuration:</b>	Port Disable / Enable. PD detect control (enable/disable), Classification detect control (enable/disable), DC disconnect detect control
<b>Power consumption:</b>	20W (maximum /without PD)	<b>Fault status detect:</b>	Null: no PD present Overload: current support over 475mA @ DC 48V and over 50 milliseconds DR fail: PD discovery resistor is not in the limited range
<b>Ventilation:</b>	2 DC Fans with detect function	<b>Mode status:</b>	System detects status, it will show I-sample, V-sample and R-detect.
<b>Operating environment:</b>	0°~40°, 10%~95% RH	<b>Parametric Info:</b>	It will show current PD parameters, it include Discover-resistor detected value, current, voltage, power consumption, classification current and determined class
<b>Storage environment:</b>	-40°~70°, 95% RH	<b>NTP:</b>	Supports RFC 2030 Simple Network Time Protocol (option)
<b>Dimension:</b>	440mm (W) x 280mm (D) x 44mm (H)	<b>SMTP:</b>	Supports RFC2821 Simple Mail Transfer protocol (option)
<b>EMI:</b>	FCC Class A, CE	<b>System log:</b>	System Log record up to 1000 entries.
<b>Safety:</b>	UL, cUL, CE/EN60950	<b>Power monitor:</b>	Supports power supply monitoring function for AC power, DC power, fan status 2 types of power supply can be installed with POE switch, POE-DCP248, and POE-DCP148-UPS.

## SOFTWARE FEATURES

<b>Management:</b>	SNMP management, Telnet management, web management, RS-232 terminal console for command line interface management
<b>SNMP MIB:</b>	RFC 1157 SNMP, RFC 1213 MIB II, RFC 1643 Ethernet like, RFC 1493 Bridge MIB, RFC 2674 VLAN MIB, private MIB, RFC 1628 UPS MIB, RFC3621 Power Ethernet MIB
<b>RFC standard:</b>	RFC 2030 Sntp, RFC 2821 SMTP (option), RFC 1492 TACACS+ (option), RFC 1215 Trap, RFC 1757 RMON 1
<b>Type of Trap:</b>	Cold start, warm start, link down, link up, authorization fail, Trap station up to 3. Private trap for power supply device.
<b>Software Upgrade:</b>	TFTP and console firmware upgradeable.
<b>Port Trunk:</b>	Support IEEE802.3ad with LACP function. Up to 7 trunk groups and group member up to 4. The trunk port within 24-port 10/100TX and extension module.
<b>Spanning Tree:</b>	IEEE802.1d spanning tree, IEEE802.1w rapid spanning tree.

