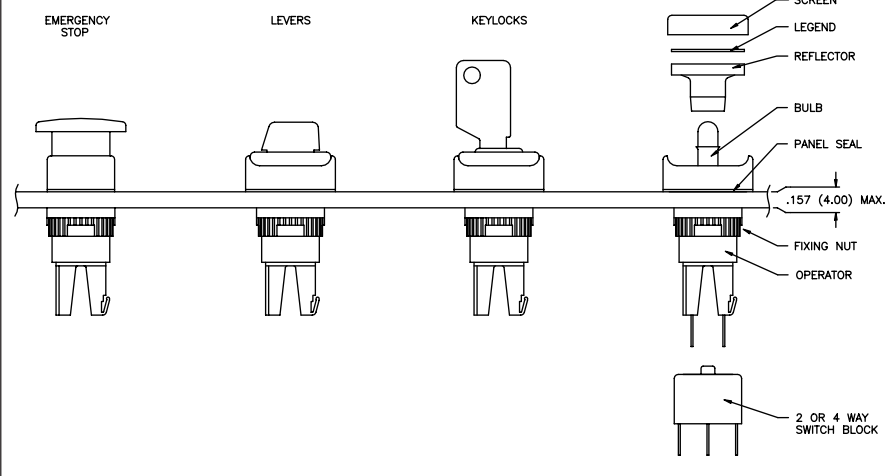


A01 SERIES

INDUSTRIAL CONTROLS

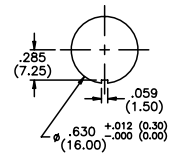
INSTALLATION & TOOLS

MODULAR CONSTRUCTION

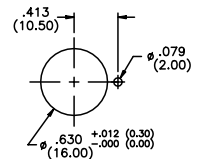


PANEL CUT-OUTS

Round & square operators



Rectangular operators



Max. panel thickness: .156" (4mm)

PANEL MOUNTING ASSEMBLY

- Drill or punch hole per panel cut-outs above.
- Assemble front operator through hole and assemble fixing nut finger tight.
- Wire switch block as required and slide onto operator until latch engages.
- Assemble bulb, if required, using tool number 30-0002.
- Snap the screen onto the reflector assembly with legend in between, if required. Then snap onto front of operator, taking care to line up the locating slot with the polarizing dot to prevent damaging the seal.

TO REMOVE BULB

Remove reflector/screen assembly by inserting tool number 30-0006 between the bezel finger guard and the screen to engage the slot and pulling. Use the bulb extractor to remove the bulb.

TO ASSEMBLE SWITCH BLOCK

Carefully line up switch block with operator then slide onto front of operator. Insure the latch is fully engaged correctly onto the switch block.

TO REMOVE SWITCH BLOCK

Depress the latch and slide the switch block off the operator.

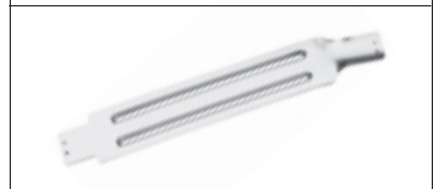
FIXING NUT KEY 30-0001



BULB REMOVER 30-0002



SCREEN REMOVER 30-0006



K

SPECIFICATIONS SUBJECT TO CHANGE WITHOUT NOTICE.