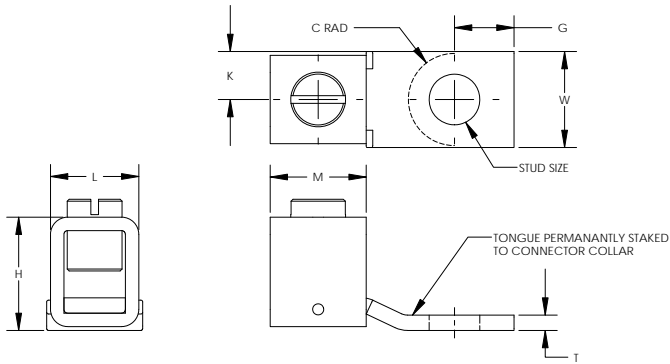


THIS COPY IS PROVIDED ON A RESTRICTED BASIS AND IS NOT TO BE USED IN ANY WAY DETRIMENTAL TO THE INTERESTS OF PANDUIT CORP.



NOTES:

- MATERIAL:  
BODY - COPPER  
SCREW - STEEL, ZINC PLATED  
◇ DENOTES BODY IS TIN PLATED COPPER
- UL LISTED & CSA CERTIFIED FOR USE UP TO 600V & TEMPERATURE RATED 90°C
- RATED FOR USE WITH COPPER STRANDED CODE CONDUCTOR ONLY
- THESE PARTS ARE ROHS COMPLIANT
- SEE PACKAGING LABEL FOR TIGHTENING TORQUE INFORMATION
- PKG QTY:  
C = 100  
D = 250  
Q = 25



PANDUIT PART NUMBER	WIRE RANGE COPPER	CURRENT RATING (AMPS)	STUD SIZE IN	DIMENSIONS - IN [mm]										HEX SIZE*
				G	W	K	A	M	T	H	L	C (MAX)		
CX35-36-CY	#14 AWG - #6 AWG	35	3/16"	0.22 [5.6]	0.38 [9.7]	0.19 [4.8]	1.04 [26.4]	0.38 [9.7]	0.07 [1.8]	0.49 [12.4]	0.38 [9.7]	0.22 [5.6]	SLOTTED	
CX35-36-DY	#14 AWG - #6 AWG	35	3/16"	0.22 [5.6]	0.38 [9.7]	0.19 [4.8]	1.04 [26.4]	0.38 [9.7]	0.07 [1.8]	0.49 [12.4]	0.38 [9.7]	0.22 [5.6]	SLOTTED	
CX35-36T-CY	#14 AWG - #6 AWG	35	3/16"	0.22 [5.6]	0.38 [9.7]	0.19 [4.8]	1.04 [26.4]	0.38 [9.7]	0.07 [1.8]	0.49 [12.4]	0.38 [9.7]	0.22 [5.6]	SLOTTED	
CX35-36T-DY	#14 AWG - #6 AWG	35	3/16"	0.22 [5.6]	0.38 [9.7]	0.19 [4.8]	1.04 [26.4]	0.38 [9.7]	0.07 [1.8]	0.49 [12.4]	0.38 [9.7]	0.22 [5.6]	SLOTTED	
CX70-14-CY	#14 AWG - #4 AWG (2) #14 AWG (2) #12 AWG	70	1/4"	0.31 [7.9]	0.50 [12.7]	0.25 [6.4]	1.27 [32.3]	0.50 [12.7]	0.08 [2.03]	0.57 [14.5]	0.46 [11.7]	0.28 [7.1]	SLOTTED	
CX70-14T-CY	#14 AWG - #4 AWG (2) #14 AWG (2) #12 AWG	70	1/4"	0.31 [7.9]	0.50 [12.7]	0.25 [6.4]	1.27 [32.3]	0.50 [12.7]	0.08 [2.03]	0.57 [14.5]	0.46 [11.7]	0.28 [7.1]	SLOTTED	
CX125-14-QY	#4 AWG - #1/0 AWG	125	1/4"	0.43 [10.9]	0.62 [15.7]	0.31 [7.9]	1.53 [38.9]	0.62 [15.7]	0.13 [3.3]	0.77 [19.6]	0.57 [14.5]	0.41 [10.4]	SLOTTED	
CX125-56T-QY	#4 AWG - #1/0 AWG	125	5/16"	0.43 [10.9]	0.62 [15.7]	0.31 [7.9]	1.53 [38.9]	0.62 [15.7]	0.13 [3.3]	0.77 [19.6]	0.57 [14.5]	0.41 [10.4]	SLOTTED	
CX225-56-QY	#2 AWG - #1/0 AWG	225	5/16"	0.56 [14.2]	1.00 [25.4]	0.50 [12.7]	2.19 [55.6]	1.00 [25.4]	0.13 [3.3]	1.13 [28.7]	0.85 [21.6]	0.50 [12.7]	9/16	
CX225-56T-QY	#2 AWG - #1/0 AWG	225	5/16"	0.56 [14.2]	1.00 [25.4]	0.50 [12.7]	2.19 [55.6]	1.00 [25.4]	0.13 [3.3]	1.13 [28.7]	0.85 [21.6]	0.50 [12.7]	9/16	
CX225-38T-QY	#2 AWG - #1/0 AWG	225	3/8"	0.56 [14.2]	1.00 [25.4]	0.50 [12.7]	2.19 [55.6]	1.00 [25.4]	0.13 [3.3]	1.13 [28.7]	0.85 [21.6]	0.50 [12.7]	9/16	

\* HEX STYLE & SIZE MAY DIFFER FROM CHART. DIFFERENCE IN SIZE WILL NOT AFFECT FIT, FORM, OR FUNCTION OF PART

REV	DATE	BY	CHK	DESCRIPTION	ECN	-R	SUP	CHK'D
06	9/10	JHNU	JHNU	B. REVISED DIMENSIONS FOR CX35 PARTS A. REVISED NOTES	N41664BA-C41664		FLD	FLD
05	5/10	JHNU	JHNU	ADDED P/N CX225-56T-QY, REMOVED PART WEIGHT COLUMN CONVERTED DRAWING TO SOLIDWORKS				
04	8/08	JHNU	JHNU	REMOVED CX400-38-3Y & CX400-12T-3Y FROM DRAWING				
03	7/08	JHNU	JHNU	ADDED P/N'S CX35-36-DY & CX35-36T-DY				
02	6/08	JHNU	JHNU	ADDED NOTE FOR VARYING COLLAR SHAPE				
01	1/07	JHNU	JHNU	ADDED PART WEIGHT COLUMN TO TABLE REMOVED CX225-38-QY FROM TABLE	PC00640			
00	3/06	JHNU	LEM	DRAWING RELEASED - RoHS COMPLIANT	PC00348			

**PANDUIT CORP. TINLEY PARK, ILLINOIS**

**CX SERIES COPPER MECHANICAL CONNECTORS**

**CUSTOMER DRAWING**

UNLESS OTHERWISE SPECIFIED  
DIMENSIONAL TOLERANCES ARE:  
(X) ±  
(XX) ±  
ANGLES ±

UNLESS OTHERWISE SPECIFIED,  
ALL DIMENSIONS ARE GIVEN IN  
INCHES, THIRD ANGLE PROJECTION

SCALE NONE

DRAWING NO / CAD FILE **B**

C41664\_06