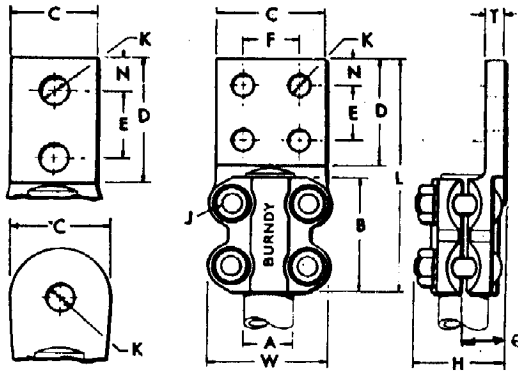


TERMINAL

Type NA

for Tubing to Flat



A clamp type terminal for the tubular bus with side formed tongue and high pressure areas on the tubing contact. High strength, corrosion resistant Durium hardware assures dependability of the joint. Other drillings, tongue shapes, and center formed tongues furnished on short notice.

Listed by C.S.A.

Type NA

For use on ALUMINUM conductors, add -W to catalog number

IPS A	NO. OF HOLES IN PAD	CATALOG NUMBER	APPROX. SHIP. WT. IN LBS.	DIMENSIONS IN INCHES											
				B	C	D	E & F	H	J	K	L	N	T	W	Q
3/8"	1	NA12†	.98	1 1/2	1 1/2	1 1/2	3/8	7/16	3 3/8	3/4	1/4	2 1/2	11/16
3/8"	2	NA12-2†	1.0	1 1/2	1 1/2	1 1/2	1	1 1/2	3/8	7/16	4 1/8	3/4	1/4	2 1/2	11/16
1/2"	1	NA13	1.3	2	1 1/2	1 3/4	3/8	7/16	3 3/8	13/16	5/16	2 1/4	25/32
1/2"	2	NA13-2	1.3	2	1 1/2	2	1 1/8	1 3/4	3/8	7/16	4 1/4	7/16	5/16	2 1/4	25/32
1/2"	2	NA13-2N*	1.6	2	1 1/2	3	1 3/4	1 3/4	3/8	7/16	5 1/4	7/16	5/16	2 1/4	25/32
3/4"	1	NA14	1.5	2	1 3/4	2	3/8	7/16	4	7/16	3/8	2 3/4	29/32
3/4"	2	NA14-2	1.7	2	1 3/4	2 1/4	1 3/8	2	3/8	7/16	4 1/2	7/16	3/8	2 3/4	29/32
3/4"	2	NA14-2N*	1.9	2	1 3/4	3	1 3/4	2	3/8	7/16	5 1/4	7/16	3/8	2 3/4	29/32
1"	2	NA15-2	2.0	2	1 3/4	2 1/4	1 3/4	2 1/8	3/8	7/16	4 1/2	7/16	3/8	2 3/4	15/16
1"	2	NA15-2N*	2.2	2	1 3/4	3	1 3/4	2 1/8	3/8	7/16	5 1/4	7/16	3/8	2 3/4	15/16
1"	4	NA15-4	2.2	2	2 1/4	2 1/4	1 3/8	2 1/8	3/8	7/16	4 1/2	7/16	3/8	2 3/4	15/16
1"	4	NA15-4N*	2.7	2	3	3	1 3/4	2 1/8	3/8	7/16	5 1/4	7/16	3/8	2 3/4	15/16
1 1/4"	2	NA16-2N*	3.9	2 1 1/8	2 1/4	3	1 3/4	2 3/8	1/2	3/8	5 1 1/8	3/8	3/8	3 1/2	1 5/16
1 1/4"	4	NA16-4	4.0	2 1 1/8	2 1/2	2 1/2	1 3/8	2 3/8	1/2	3/8	5 3/8	3/8	3/8	3 1/2	1 5/16
1 1/4"	4	NA16-4N*	4.3	2 1 1/8	3	3	1 3/4	2 3/8	1/2	3/8	5 1 1/8	3/8	3/8	3 1/2	1 5/16
1 1/2"	2	NA17-2N*	4.6	2 1 1/8	2 1/2	3	1 3/4	2 3/4	1/2	3/8	5 1 1/8	3/8	1/2	3 1 1/8	1 5/16
1 1/2"	4	NA17-4	4.5	2 1 1/8	2 3/4	2 3/4	1 1/2	2 3/4	1/2	3/8	5 3/8	3/8	1/2	3 1 1/8	1 5/16
1 1/2"	4	NA17-4N*	4.9	2 1 1/8	3	3	1 3/4	2 3/4	1/2	3/8	5 1 1/8	3/8	1/2	3 1 1/8	1 5/16
2"	2	NA18-2	5.8	2 1 1/8	2 3/4	3 1/2	2	3 1/8	1/2	3/8	6 3/8	3/8	1/2	4 3/8	1 9/16
2"	2	NA18-2N*	5.5	2 1 1/8	2 3/4	3	1 3/4	3 3/8	1/2	3/8	5 1 1/8	3/8	1/2	4 3/8	1 9/16
2"	4	NA18-4	5.9	2 1 1/8	3 1/4	3 1/4	1 1/2	3 3/8	1/2	3/8	6 1/8	13/16	1/2	4 3/8	1 9/16
2"	4	NA18-4N*	5.8	2 1 1/8	3 1/4	3	1 3/4	3 3/8	1/2	3/8	5 1 1/8	3/8	1/2	4 3/8	1 9/16
2 1/2"	2	NA19-2	7.7	2 1 1/8	3	4	2 3/8	3 1 1/8	1/2	3/8	6 1 1/8	13/16	1 1/8	5 1/4	1 27/32
2 1/2"	4	NA19-4	8.2	2 1 1/8	3 3/4	3 3/4	2	3 1 1/8	1/2	3/8	6 1 1/8	7/8	1 1/8	5 1/4	1 27/32
2 1/2"	4	NA19-4N*	7.5	2 1 1/8	3 3/4	3	1 3/4	3 1 1/8	1/2	3/8	5 1 1/8	3/8	1 1/8	5 1/4	1 27/32
3"	4	NA20-4	13	3 1/4	4 3/8	4 3/8	2 1/2	4 3/8	3/8	3/8	7 1 1/8	1 1/2	1 1/8	6 3/4	2 3/16
3"	4	NA20-4N*	11	3 1/4	4 3/8	3	1 3/4	4 3/8	3/8	3/8	6 3/8	3/8	1 1/8	6 3/4	2 3/16
3 1/2"	4	NA21-4	16	3 1/4	4 3/4	4 3/4	2 3/4	4 1 1/8	3/8	3/8	8 3/8	1	1 1/8	6 1 1/8	2 15/32
3 1/2"	4	NA21-4N*	13	3 1/4	4 3/4	3	1 3/4	4 1 1/8	3/8	3/8	6 3/8	3/8	1 1/8	6 1 1/8	2 15/32
4"	4	NA22-4	19	3 1/4	5 1/4	5 1/4	3 1/8	5 1/2	3/8	3/8	8 1 1/8	1 1/8	1 1/8	7 3/8	2 3/4
4"	4	NA22-4N*	15	3 1/4	5 1/4	3	1 3/4	5 1/2	3/8	3/8	6 3/8	3/8	1 1/8	7 3/8	2 3/4
5"	4	NA24-40		5 1/8	6 1/2	6 1/2	3 1/4	6 5/8	5/8	1 1/16	12	1 5/8	1 3/4	8 1/2	3 13/32
6"	4	NA86-40		5 1/8	7 5/8	7 5/8	3 3/4	7 7/8	5/8	1 1/16	13 1/8	1 1 1/2	1 5/8	9 1/16	3 1 1/2

◊ EQUIPPED WITH 6 HEX. HEAD BOLTS

TERMINALS			
CAT. NO. 'NA'		SCALE	
DRAWN H.M.S 9-9-38		CHECKED EPH J. 10-16-57	
BURNDY Corporation		DRAWING NO.	REV.
		SA-6759	7
NORWALK, CONNECT.			

7 1956 REV REF PRINT (DC4624) SUPERSEDES SC6759-5

APPROVED