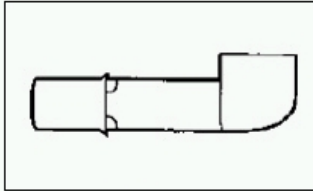


31769 Product Details

 [Live Product Chat](#)




31769

TE Part Number: 31769

 [Active](#)

 [Add to Part List](#)

Splices - Closed Barrel

 [Always EU RoHS/ELV Compliant \(Statement of Compliance\)](#)

Product Highlights:

- Splice
- Not Sealed
- Splice Type = Knife Disconnect
- Body Style = Budget
- Uninsulated

[View all Features](#) | [Find Similar Products](#)

Quick Links

- [Check Pricing & Availability](#)
- [Search for Tooling](#)
- [Product Feature Selector](#)
- [Contact Us About This Product](#)
- [Request Samples](#)

NEW!

Documentation & Additional Information

Product Drawings:

- [TERMINAL, KNIFE DISCONNECT, BUDGET](#) (PDF, English)

Catalog Pages/Data Sheets:

- None Available

Product Specifications:

- None Available

Application Specifications:

- None Available

Instruction Sheets:

- None Available

CAD Files:

- None Available

Additional Information:

- [Product Line Information](#)

Related Products:

- [Tooling](#)

[List all Documents](#)

Product Features (Please use the Product Drawing for all design activity)

Product Type Features:

- [Product Type](#) = Splice
- [Sealed](#) = No
- [Splice Type](#) = Knife Disconnect
- [Body Style](#) = Budget
- [Insulation](#) = No
- [Insulation Support](#) = Non-Insulation Support
- [Material](#) = Copper
- [Finish](#) = Tin
- Color = None

Body Related Features:

- [Wire Range \(mm \[AWG\]\)](#) = 0.30-0.90² [22-18]
- [Wire Range \(CMA\)](#) = 509 - 1,900

Industry Standards:

- Government/Industry Qualification = No
- [RoHS/ELV Compliance](#) = RoHS compliant, ELV compliant
- [Lead Free Solder Processes](#) = Not relevant for lead free process
- RoHS/ELV Compliance History = Always was RoHS compliant

Packaging Related Features:

- [Packaging Method](#) = Loose Piece
- Packaging Quantity = 1000/Box

Other:

- Brand = AMP

 [Provide Website Feedback](#) | [Need Help?](#)