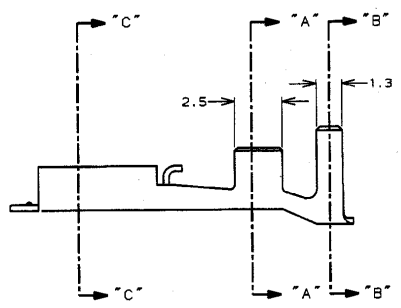
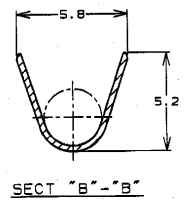
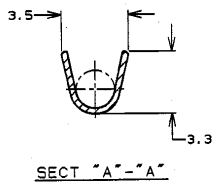
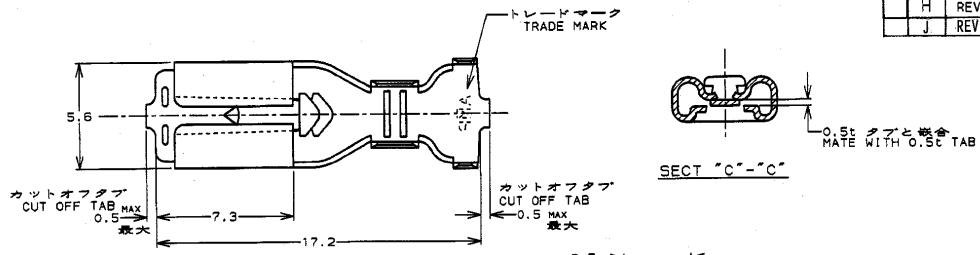


THIS DRAWING IS UNPUBLISHED. RELEASED FOR PUBLICATION
 © COPYRIGHT 19 BY AHP INCORPORATED, ALL RIGHTS RESERVED.

REVISIONS						
REV	DATE	BY	DESCRIPTION	ECN	DATE	BY
E	27, SEP '99	A.I	REVISED	J-12220		Y.F
F	10, MAY '99	M.Su	REDRAWN WITHOUT CHANGE	FJ00-0723-99		M.Su
G	12, NOV '99	T.Y	REVISED	FJ00-1849-99		Y.K
H	20, JAN '00	T.H	REVISED	FJ00-0111-00		M.S
J	04, MAR '00	T.H	REVISED	FJ00-0309-02		M.S



- (注)
1. 適用スリーブ型番: 174737
 2. 取扱説明書: 411-5391
 3. 手動工具型番: 911588-1
- △ 材料: 錫めつき磷み黄銅 (0.3t)
 △ 材料: 錫めつき磷み黄銅 (0.3t)
 △ 材料: 錫めつき高耐熱銅合金 (0.3t)
- (NOTES)
1. APPLICABLE SLEEVE P/N: 174737
 2. INSTRUCTION SHEET NO: 411-5391
 3. HAND TOOL NO: 911588-1
- △ MATERIAL: PRE-TIN BRASS (0.3t)
 △ MATERIAL: PRE-TIN PHOS BRO (0.3t)
 △ MATERIAL: PRE-TIN HIGH HEAT RESISTANCE COPPER ALLOY (0.3t)

PRODUCT SPEC	MATERIAL	L/P NO	REEL SIZE	P/N
108-5685	△		10, INCH PAPER REEL	173724-6
108-5685	△		10, INCH PAPER REEL	173724-5
108-5236	△	173725-1	18, INCH SUS REEL	1-173724-1
			10, INCH PAPER REEL	173724-1

THIS DRAWING IS A CONTROLLED DOCUMENT FOR THE INFORMATION OF THE CUSTOMER. IT IS SUBJECT TO CHANGE AND THE CONTROLLING ENGINEERING ORGANIZATION SHOULD BE CONTACTED FOR THE LATEST REVISION.

DRAWN	M. SUZUKI	10, MAY '99
CHK	M. SHINDO	10, MAY '99
APVD	M. SHINDO	10, MAY '99

PRODUCT SPEC: 製品規格 / SEE TABLE
 APPLICATION SPEC: 取付適用規格 / 114-5114

WIRE RANGE: 0.5-2.2mm² (AWG20-14)
 INSULATION DIA: 1.9-4.4mm

Tyco Electronics
 Tyco Electronics AMP K.K.
 Kawasaki, Japan

187 シリーズ・ポジティブ・ロック-EX
 187 SERIES POSITIVE LOCK-EX

SIZE CASE CODE: A3 00779
 DRAWING NO: 173724

RESTRICTED TO: -

CUSTOMER DRAWING
 SCALE: 5-1
 SHEET: 1 OF 1
 REV: J

AHP1470-1B REV 10/93
 FJ033747