

4

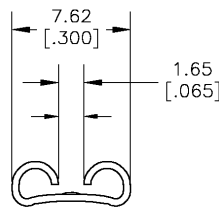
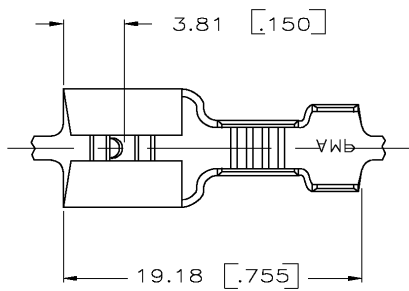
3

2

1

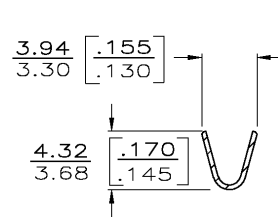
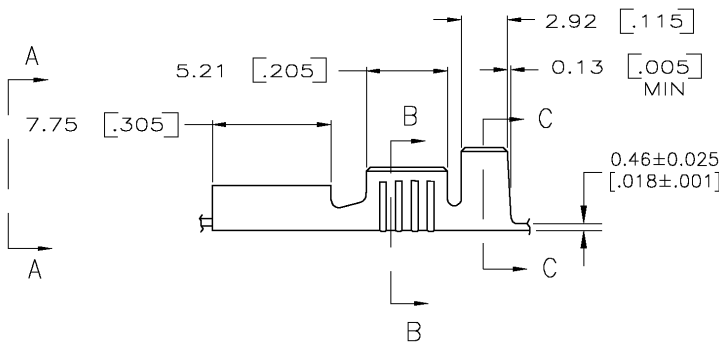
THIS DRAWING IS UNPUBLISHED. RELEASED FOR PUBLICATION
 © COPYRIGHT - BY TYCO ELECTRONICS CORPORATION. ALL RIGHTS RESERVED.

| LOC | DIST | REVISIONS | | | | |
|-----|------|-------------|----------------------|---------|------|----|
| P | LTR | DESCRIPTION | DATE | DWN | APVD | |
| AF | 50 | T | REV PER 0G3A-0495-04 | 24JUN04 | JR | PD |

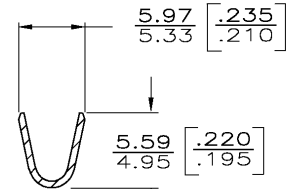


VIEW A-A

- 1 DIM'S IN BRACKETS ARE IN INCHES
 - 2 CONTINUOUS STRIP ON REELS
 - 3 WIRE SIZE 0.8-2.0mm [#18-#14] AWG
 - 4 INSULATION RANGE IS 3.05-4.32 [.120-.170] DIA.
 - 5 MATING TAB THK IS 0.81±0.025 [.032±.001].
- △ 0.38 X 15' [.015 X 15'] SWAGE ON FRONT OF RECEPTACLE. FOR FOREIGN PRODUCTION ONLY.



SECT B-B



SECT C-C

| |
|-----------|
| △ 41274-1 |
| 41274 |
| PART NO. |

| TYPE | WIDTH | STRIP LENGTH ±.015 | TYPE | WIDTH | ±.051 [.002] HEIGHT | WIRE |
|--------|-------------|--------------------|------|-------------|---------------------|-------------|
| F OR O | 4.57 [.180] | 6.4 [.252] | F | 3.05 [.120] | 1.90 [.075] | 2.0mm [.14] |
| | | | | | 1.68 [.066] | 1.3mm [.16] |
| | | | | | 1.55 [.06] | 0.8mm [.18] |

THIS DRAWING IS A CONTROLLED DOCUMENT.

| DIMENSIONS: | TOLERANCES UNLESS OTHERWISE SPECIFIED: |
|-------------|--|
| MM [INCHES] | |
| 0 PLC | ± - |
| 1 PLC | ± - |
| 2 PLC | ± - |
| 3 PLC | ± 0.38 [.015] |
| 4 PLC | ± - |
| ANGLES | ± - |

| | | |
|------------------|------------|--------|
| DWN | JR RUTH | 2/5/86 |
| CHK | G YETTER | 2/5/86 |
| APVD | R KUZO | 2/5/86 |
| PRODUCT SPEC | | |
| APPLICATION SPEC | | |
| WEIGHT | | |
| MATERIAL | BRASS | |
| FINISH | TIN PLATED | |

tyco
Electronics

Tyco Electronics Corporation
 Harrisburg, Pa 17105-3608

NAME

.250 SERIES FASTON
 RECEPTACLE

SIZE CAGE CODE DRAWING NO

A3 00779 C-41274

RESTRICTED TO

CUSTOMER DRAWING

SCALE 4:1

SHEET 1 OF 1 REV T