

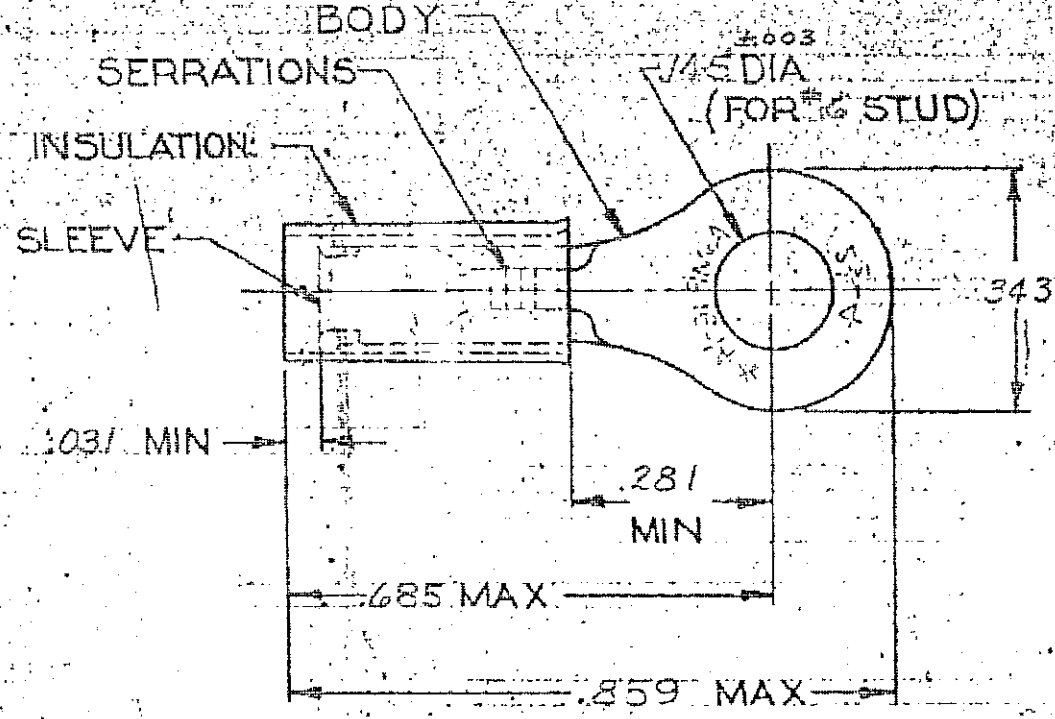
DRAWINGS MADE IN AMERICAN PROJECTION

LOC: 6
 PART: 14
 DIST: 2

© 1957 BY AMP INCORPORATED, ALL RIGHTS RESERVED, AMP PRODUCTS COVERED BY PATENTS AND/OR PATENTS PENDING.


REVISIONS

LTR	DESCRIPTION	DATE	APPROVED
B	REDRAWN & ADDED TAPE NO.	3-14-69	EMW
C	REVISED B-630	4-1-70	FCV
D	REVISED F-621	8-23-73	YME
E	REV Z 0720-0043-93	3-10-93	ML



FOR .715 TO .770 WIRE INSULATION DIA.
 TONGUE MATERIAL THK. = .031 ± .002

NOTE: 1. STAMPING MAY BE ON TOP OR BOTTOM.

00. HOUSE PC. BOX 18-36158-1			
1	36158 ON TAPE	2-36158-1	BODY & SLEEVE: COPPER (QQ-C-576) TIN PL (MIL-T-10727)
1	WIRE TERMINAL	36158	INSULATION: BLUE NYLON (MIL-M-20693) TYPE I
QTY	DESCRIPTION	PART NO.	MATERIAL & FINISH
UNLESS OTHERWISE SPECIFIED DIMENSIONS ARE IN INCHES TOLERANCES ON: DECIMALS: ± .003 ANGLES: ± 5°		CONTRACT NO.	 AMP INCORPORATED HARRISBURG, PENNSYLVANIA
MATERIAL:		DR. <i>Am Eng</i> 3-11-69	
SEE TABLE		CHK. <i>RW</i> 3-11-69	
		APPD. <i>Swabel</i> 4-7-69	
		REL. <i>Am Eng</i> 4/8/69	
		OSG/ APPD.	NAME: WIRE TERMINAL
		OTHER APPD.	P.I.D.G. RING TONGUE
			WIRE SIZE: 16-14
		SIZE	CODE IDENT NO.
		A	00779
			NUMBER
			36158
		SCALE	SHEET
		1/16"	1 OF 1