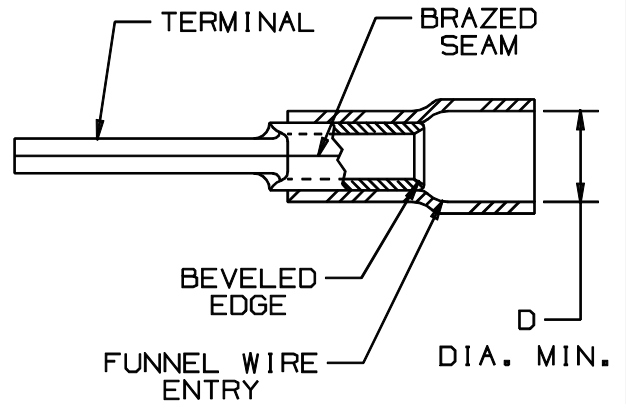


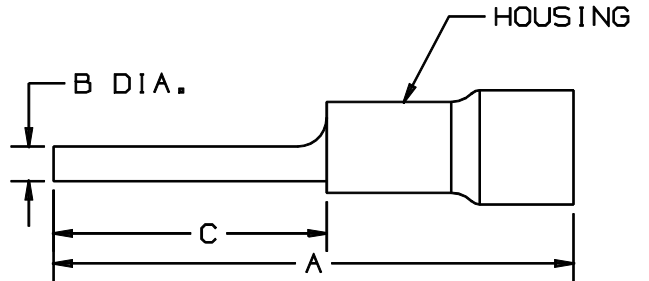
THIS COPY IS PROVIDED ON A RESTRICTED BASIS AND IS NOT TO BE USED IN ANY WAY DETRIMENTAL TO PANDUIT

PANDUIT PART #		WIRE SIZE mm <sup>2</sup>	DIMENSIONS mm				HOUSING COLOR
PREFIX	PK		A ±.8	B DIA. ±.3	C ±.5	D DIA. ±.5	
PMV1-P10	-C -M	0,5-1,5	21,1 (.83)	2,0 (.08)	11,9 (.47)	3,8 (.15)	RED
PMV2-P10	-C -M	1,5-2,5	21,1 (.83)	2,0 (.08)	11,9 (.47)	4,3 (.17)	BLUE
PMV6-P10	-L -D	2,5-6,0	27,9 (1.10)	2,5 (.10)	14,0 (.55)	6,4 (.25)	YELLOW



NOTES:

- USED FOR:
  - A. SOLID OR STRANDED COPPER WIRE
  - B. WIRE RANGE: 4,0-6,0mm<sup>2</sup> FOR CT-1551M
- MATERIAL:
  - A. STAMPING - COPPER, TIN PLATED
  - B. HOUSING - VINYL
- DIMENSIONS IN BRACKETS ARE IN INCHES
- PACKAGE QTY:
  - A. STD: -L=50, -C=100
  - B. BULK: -D=500, -M=1000
- WIRE STRIP LENGTH:  $7,1 \begin{smallmatrix} +.8 \\ -0 \end{smallmatrix}$  ( $9/32 \begin{smallmatrix} +1/32 \\ -0 \end{smallmatrix}$ )
- INSTALLATION TOOLS: REF. DWGS. A41522, A41523, A41524, A41525



A41446\_04

04	10/97	TM		CHANGED DECIMAL POINTS TO COMMAS				 TINLEY PARK, ILLINOIS
03	5/97	TM	WJB	CORRECTED SPELLING ERROR	05827	LA	DBH	
02	3/97	JKD	SKB	ADDED CT-1551M TO NOTES	05700	LA	DBH	
01	10/94	TH	RLS	UPDATED NOTES AND DIMENSIONS	2545	LA	KS	
VINYL INSULATED METRIC PIN TERMINAL								
REV	DATE	BY	CHK	DESCRIPTION	ECN#	CUST	PM	DRAWN BY: BDK CHK'D: RLS SCALE: NONE DRAWING NO.: 41446A