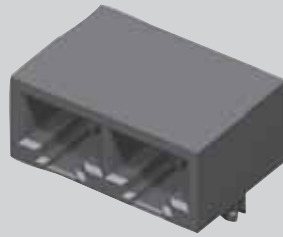
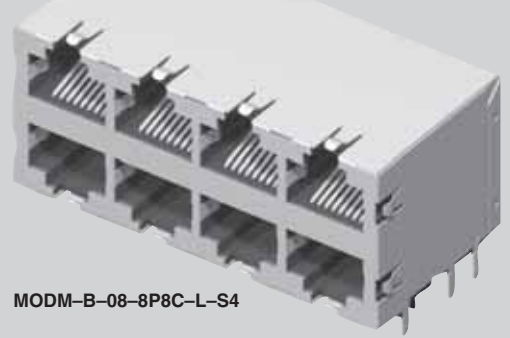




MODM-A-02-8P8C-G



MODM-B-08-8P8C-L-S4



MODM-A, MODM-B SERIES

GANGED IN-LINE/STACKED MODULAR JACKS

SPECIFICATIONS

For complete specifications and recommended PCB layouts see www.samtec.com?MODM-A

Insulator Material: PBT Glass Filled
Contact Material: Phosphor Bronze
Shield Material: Copper Alloy
Plating: Gold on Contacts, Nickel on Shield, Gold on Tails
Operating Temp Range: -25°C to +90°C
Current Rating: 2 A per Contact
Voltage Rating: 120 VAC
Contact Resistance: 20 mΩ max
Minimum Cycles: 500
System Applications: CAT3
Packaging: Packaged and shipped in Bulk Packaging Trays; Trays suitable for automation are available upon request.
RoHS Compliant: Yes
Lead-Free Solderable: Yes (Wave Solder only)



MODM - A - NO. OF PORTS - POSITIONS CONTACTS - PLATING - SHIELD OPTION

-02 thru -06, -08, -10

-8P8C = 8 Positions 8 Contacts per port

-G = 15μ" (0,38μm) Gold on Mating Area, Gold Flash on Tails

-E = 50μ" (1,27μm) Gold on Mating Area, Gold Flash on Tails

-S = Shielded (No Panel Grounds) (-03 and -10 Not Available)

-S4 = Shielded with Top, Bottom and Side Panel Grounds (Requires -02, -04 or -08 ports)

APPLICATION SPECIFIC OPTION
Other plating options available. Call Samtec.

NO. OF PORTS	A Unshielded	A Shielded
-02	(30,46) 1.199	(31,00) 1.220
-03	(44,43) 1.749	N/A
-04	(58,40) 2.299	(58,94) 2.320
-05	(72,37) 2.849	(72,91) 2.870
-06	(86,34) 3.399	(86,88) 3.420
-08	(114,28) 4.499	(114,90) 4.524
-10	(128,28) 5.050	N/A

SPECIFICATIONS

For complete specifications and recommended PCB layouts see www.samtec.com?MODM-B

Insulator Material: PBT Glass Filled
Contact Material: Phosphor Bronze
Shield Material: Copper Alloy
Plating: Gold on Contacts, Nickel on Shield, Gold on Tails
Operating Temp Range: -25°C to +90°C
Current Rating: 1.5 A per contact
Voltage Rating: 120 VAC max
Contact Resistance: 20 mΩ max
Minimum Cycles: 500
System Applications: CAT3
Packaging: Packaged and shipped in Bulk Packaging Trays; Trays suitable for automation are available upon request.
RoHS Compliant: Yes
Lead-Free Solderable: Yes (Wave Solder only)



MODM - B - NO. OF PORTS - POSITIONS CONTACTS - PLATING - OPTIONS

-02, -04, -06, -08, -12, -16

-8P8C = 8 Positions 8 Contacts per port

-L = 15μ" (0,38 μm) Gold on Mating Area, Gold Flash on Tails

-U = 50μ" (1,27μm) Gold on Mating Area, Gold Flash on Tails

-S4 = Shielded with Top, Bottom and Side Panel Grounds (-02 port does not have panel grounds)

APPLICATION SPECIFIC OPTION
Other plating options available. Call Samtec.

NO. OF PORTS	A Unshielded	A Shielded
-02	(16,50) .650	(17,25) 0.679
-04	(30,50) 1.200	(31,25) 1.230
-06	(44,50) 1.752	(45,25) 1.781
-08	(58,50) 2.303	(59,25) 2.333
-12	(86,50) 3.406	(87,25) 3.435
-16	(114,50) 4.508	(115,25) 4.537

Due to technical progress, all designs, specifications and components are subject to change without notice.

WWW.SAMTEC.COM

SAMTEC USA • Tel: 1-800-SAMTEC-9 or 812-944-6733 SAMTEC SILICON VALLEY • Tel: 408-395-5900 SAMTEC SOUTHERN CALIFORNIA • Tel: 1-800-726-8329
 SAMTEC AMERICA LATINA COMERCIO EXTERIOR LTDA • Tel: +55 31 3786 3227 SAMTEC UNITED KINGDOM • Tel: 44 01236 739292 SAMTEC GERMANY • Tel: +49 (0) 89 / 89460-0
 SAMTEC FRANCE • Tel: 33 01 60 95 06 60 SAMTEC ITALY • Tel: 39 039 8890337 SAMTEC NORDIC/BALTIC • Tel: +46-84477280 SAMTEC BENELUX • Tel: 44 01236 739292 SAMTEC ISRAEL • Tel: 972-3-7526600
 SAMTEC INDIA • Tel: +91-80-3272 1612 SAMTEC ASIA PACIFIC • Tel: 65 6745-5955 SAMTEC JAPAN • Tel: 045-475-1385 SAMTEC CHINA • Tel: 86-21-61103766 SAMTEC TAIWAN • Tel: 886-2-2735-6109
 Downloaded from Elcodis.com electro SAMTEC HONG KONG • Tel: 852-26009858 SAMTEC KOREA • Tel: 82-31-717-5685 SAMTEC ANZ • Tel: 613 9512 7747 SAMTEC SOUTH AFRICA • Tel: 27 11 452 8112