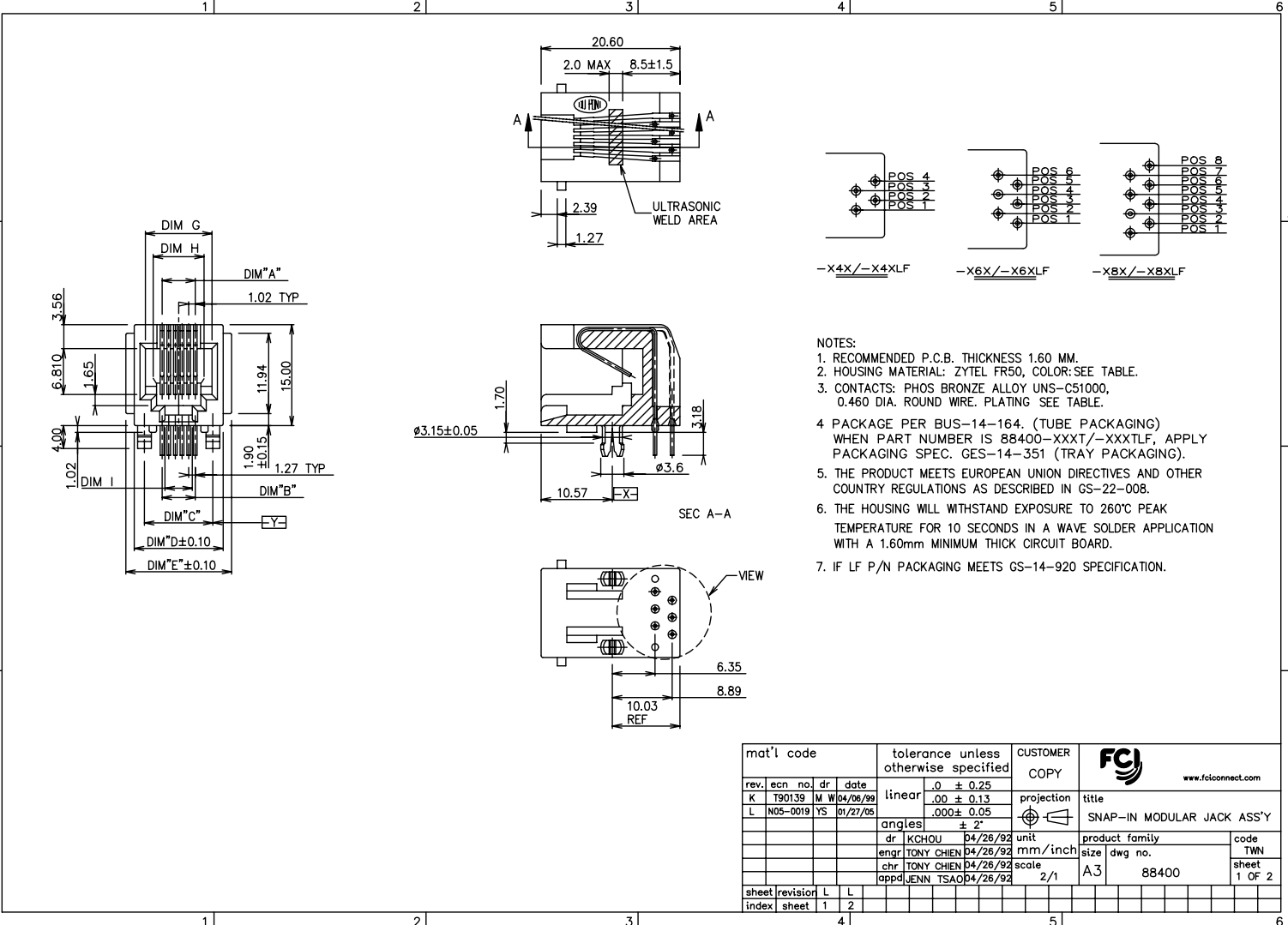


Tous droits strictement réservés. Réproduction ou communication à des tiers lit  
 sous quelque forme que ce soit sans autorisation écrite du propriétaire.  
 Property of FCJ BERNE ELECTRONICS. Reproduction or communication to any other  
 party is not permitted without written authority from the proprietor.  
 Copyright FCJ BERNE ELECTRONICS.



- NOTES:
1. RECOMMENDED P.C.B. THICKNESS 1.60 MM.
  2. HOUSING MATERIAL: ZYTEL FR50, COLOR: SEE TABLE.
  3. CONTACTS: PHOS BRONZE ALLOY UNS-C51000, 0.460 DIA. ROUND WIRE. PLATING SEE TABLE.
  4. PACKAGE PER BUS-14-164. (TUBE PACKAGING) WHEN PART NUMBER IS 88400-XXXT/-XXXTLF, APPLY PACKAGING SPEC. GES-14-351 (TRAY PACKAGING).
  5. THE PRODUCT MEETS EUROPEAN UNION DIRECTIVES AND OTHER COUNTRY REGULATIONS AS DESCRIBED IN GS-22-008.
  6. THE HOUSING WILL WITHSTAND EXPOSURE TO 260°C PEAK TEMPERATURE FOR 10 SECONDS IN A WAVE SOLDER APPLICATION WITH A 1.60mm MINIMUM THICK CIRCUIT BOARD.
  7. IF LF P/N PACKAGING MEETS GS-14-920 SPECIFICATION.

mat'l code		tolerance unless otherwise specified		CUSTOMER COPY		<b>FCJ</b>		www.fcjconnect.com	
rev.	ecn no.	dr	date	linear	.0 ± 0.25	projection	title		
K	T90139	M	04/06/99	W	.00 ± 0.13		SNAP-IN MODULAR JACK ASS'Y		
L	N05-0019	YS	01/27/05		.000± 0.05		product family		code
				angles	± 2°	unit	A3		TWN
				dr	KCHOU 04/26/92	mm/inch	88400		sheet
				enr	TONY CHIEN 04/26/92	size	1 of 2		1 of 2
				chr	TONY CHIEN 04/26/92	scale			
				appd	JENN TSAO 04/26/92	2/1			
sheet	revision	L	L						
index	sheet	1	2						

PDM: Rev:L STATUS:Released Printed: Dec 04, 2009

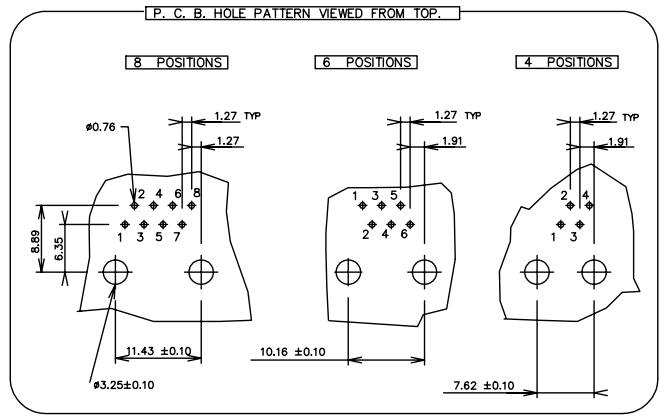
Tous droits réservés. Reproduction ou communication à des tiers sans autorisation écrite du propriétaire.  
 Property of c. BERNE ELECTRONICS. Copyright BERNE ELECTRONICS by



All rights strictly reserved. Reproduction or communication to others without written authority from the proprietor.  
 Property of c. BERNE ELECTRONICS. Copyright BERNE ELECTRONICS by

DIM.	NO OF POS	DIM A	DIM B	DIM C	DIM D	DIM E	DIM G	DIM H	DIM I	LOADED POS	REMARK
88400-X44/-X44LF	4	3.05	3.81	7.62	11.20	13.72	7.87	5.50	3.05	ALL POS	
88400-X42/-X42LF										2,3	
88400-X66/-X66LF	6	5.08	6.35	10.16	13.20	15.72	9.906	6.60	4.06	ALL POS	
88400-X64/-X64LF										2,3,4,5	
88400-X62/-X62LF										3,4	
88400-X88/-X88LF	8	7.11	8.89	11.43	15.24	17.76				ALL POS	NOT AVAILABLE
88400-X86/-X86LF										2,3,4,5,6,7	
88400-X84/-X84LF										3,4,5,6	

PLATING & HSG COLOR CODE	PLATING	HSG COLOR
0	30 v " G.X.T.	BLACK
1	15 v " GOLD.	
2	20 v " G.F.P.D.	
3	30 v " GOLD.	
4	15 v " G.X.T.	
5	50 v " GOLD.	
6	6 v " GOLD.	
7	2 v " GOLD.	



mat'l code		tolerance unless otherwise specified		CUSTOMER		 www.fcjconnect.com	
rev.	ecn no.	dr	date	linear	.0 ± 0.25	COPY	
L					.00 ± 0.13	projection	title
				angles	.000 ± 0.05	⊕	SNAP-IN MODULAR JACK ASS'Y
				dr	± 2°	unit	product family
				enr		mm/inch	code
				chr		scale	TWN
				appd		2/1	sheet
sheet	revision						2 Of 2
index	sheet						

PDM: Rev:L STATUS:Released Printed: Dec 04, 2009