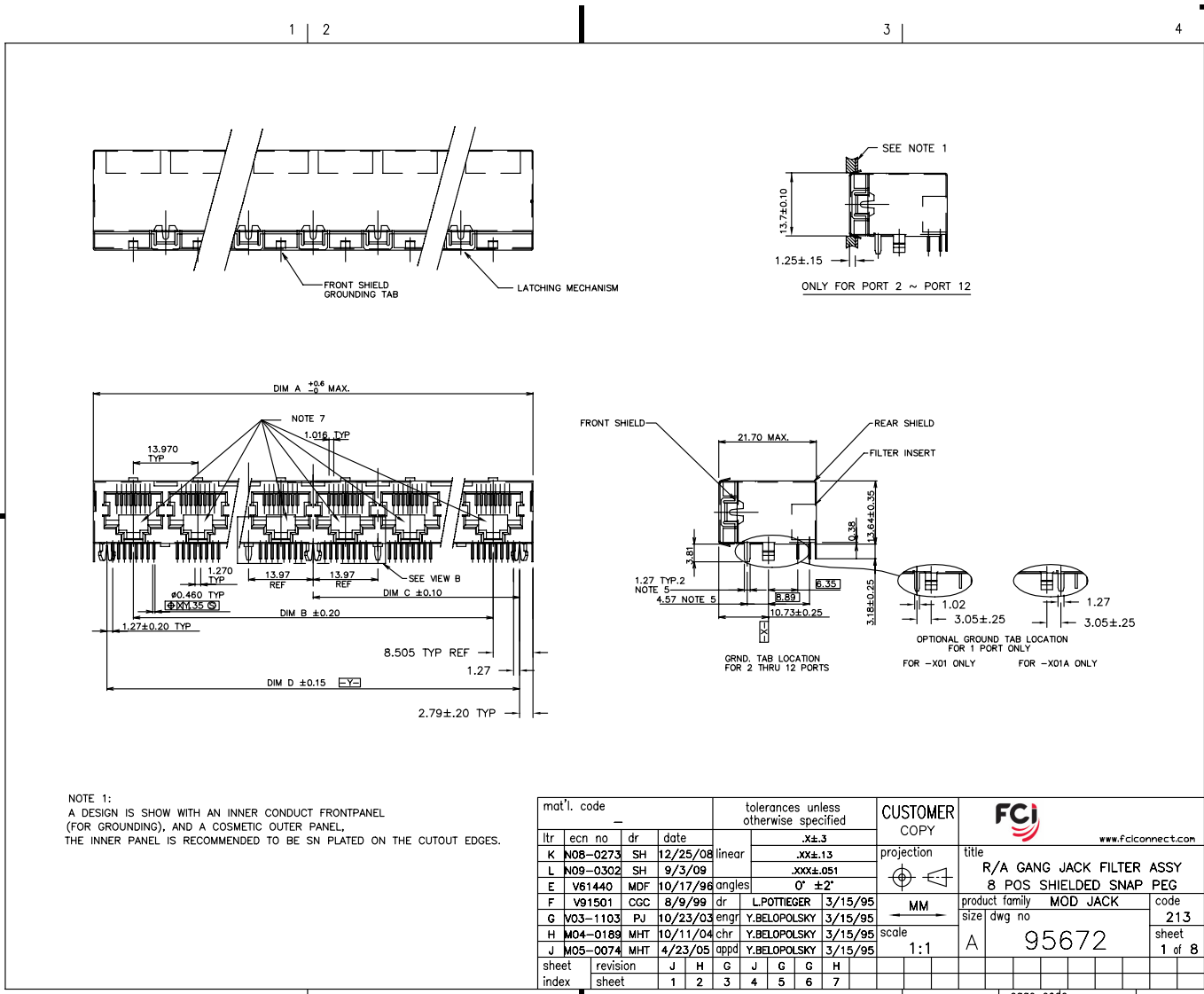


Tous droits strictement réservés. Reproduction ou communication à des tiers interdite sous quelque forme que ce soit sans autorisation écrite du propriétaire. Propriété de c FCI. Droits de reproduction FCI.



All rights strictly reserved. Reproduction or issue to third parties in any form whatever is not permitted without written authority from the proprietor. Property of FCI. Copyright FCI.



NOTE 1:
A DESIGN IS SHOW WITH AN INNER CONDUCT FRONT-PANEL (FOR GROUNDING), AND A COSMETIC OUTER PANEL. THE INNER PANEL IS RECOMMENDED TO BE SN PLATED ON THE CUTOUT EDGES.

mat'l. code		tolerances unless otherwise specified		CUSTOMER COPY		 www.fciconnect.com	
ltr	ecn no	dr	date	linear	projection	title	
K	N08-0273	SH	12/25/08	.XX±.13		R/A GANG JACK FILTER ASSY	
L	N09-0302	SH	9/3/09	.XXX±.051		8 POS SHIELDED SNAP PEG	
E	V61440	MDF	10/17/96	0° ±2'	MM	product family	MOD JACK
F	V91501	CGC	8/9/99	dr	scale	size	code
G	V03-1103	PJ	10/23/03	engr	1:1	dwg no	213
H	M04-0188	MHT	10/11/04	chr	A	95672	sheet
J	M05-0074	MHT	4/23/05	appd			1 of 8
sheet index	revision	J	H	G	J	G	H
sheet	sheet	1	2	3	4	5	6

Tous droits strictement réservés. Reproduction ou communication à des tiers interdite sous quelque forme que ce soit sans autorisation écrite du propriétaire. Property of FCI. Droits de reproduction FCI.



All rights strictly reserved. Reproduction or issue to third parties in any form whatever is not permitted without written authority from the proprietor. Property of FCI. Copyright FCI.

PRODUCT No.	NOTE 8	PORTS No	DIM A ± 0.60 -0.00	DIM B	DIM C ± 0.10	DIM D ± 0.15	GROUND LEG NUMBER ON THE BACK (VIEW B) SEE DIAGRAM ON SH. 3
95672-X01		1	15.74	-	5.715	11.43	
95672-X01A		1	15.74	-	5.715	11.43	
95672-X02 -YZ		2	30.98	13.97	12.700	25.40	
95672-X03 -YZ		3	44.95	27.94	19.685	39.37	
95672-X04 -YZ		4	58.92	41.91	26.670	53.34	
95672-X05 -YZ		5	72.89	55.88	33.655	67.31	
95672-X06 -YZ		6	86.86	69.85	40.640	81.28	
95672-X07 -YZ		7	100.83	83.82	47.625	95.25	
95672-X08 -YZ		8	114.80	97.79	54.610	109.22	
95672-X09 -YZ		9	128.77	111.76	61.595	123.19	
95672-X10 -YZ		10	142.74	125.73	68.580	137.16	
95672-X11 -YZ		11	156.71	139.70	75.565	151.13	
95672-X12 -YZ		12	170.68	153.67	82.550	165.10	

NOTE 5
NOTE 5

NOTES:

1. RECOMMENDED P.C.B THICKNESS 1.60 MM
2. HOUSING MAT'L: HIGH TEMP RESIN
3. CONTACTS: PHOS BRONZE ALLOY UNS-C51000, \emptyset 0.460 ROUND WIRE, PLATING SEE TABLE.
4. SHIELDING MATERIAL: BRASS ALLOY .25 MM THICK SHIELDING PLATING: NICKEL UNDERPLATE 40u" MIN FINISH OF BRIGHT TIN LEAD 100u" MIN
LEAD FREE OPTION
SHIELDING PLATING: NICKEL UNDERPLATE 40u" MIN FINISH OF BRIGHT PURE TIN 100u" MIN
- ⑤ SEE SNGL. PORT GROUND LEG OPTIONS, SIDE VIEW PG.1 FOR DETAILS.
6. ALL DIMENSIONS IN MILLIMETERS.
- ⑦ COMPANY LOGO LOCATED IN THIS AREA.
- ⑧ ADD LF SUFFIX AT THE END OF PART NUMBER FOR LEAD FREE OPTION.
9. THE HOUSING WILL WITHSTAND EXPOSURE TO 260°C PEAK TEMPERATURE FOR 15 SECONDS IN A WAVE SOLDER APPLICATION WITH A 1.5mm MINIMUM THICK CIRCUIT BOARD. SEE APPLICATION NOTES/PROCEDURES IF THEY ARE AVAILABLE.
10. THIS PRODUCT MEETS EUROPEAN UNION DIRECTIVES AND OTHER COUNTRY REGULATION AS DESCRIBED IN GS-22-008.
- ⑪ PLATING OPTIONS:
MAY BE EITHER GOLD OR GXT PLATED AT MANUFACTURER'S OPTION.

PLATING CODE X	PLATING ⑪
0	30u" G.X.T.
1	15u" GOLD.
3	30u" GOLD.
5	50u" GOLD.

FRONT SHIELD CODE Y
0 = STANDARD GRND. TABS
1 = NO GRND. TABS

REAR SHIELD CODE Z
0 = STANDARD GRND. LEGS
1 = 1 STANDARD GRND. LEG
2 = ALL GRND. LEGS
3 = NO GRND. LEGS

NOTE: PLEASE CHECK FOR AVAILABILITY, NOT ALL OPTIONS AVAILABLE.

mat'l. code		tolerances unless otherwise specified		CUSTOMER COPY		FCI		www.fciconnect.com	
ltr	ecn no	dr	date	linear	projection	title			
L						R/A GANG JACK FILTER ASSY			
				angles		8 POS SHIELDED SNAP PEG			
				dr	L.POTTIEGER 3/15/95	MM	product family	MOD JACK	code
				enr	Y.BELOPOLSKY 3/15/95	scale	size	dwg no	213
				chr	Y.BELOPOLSKY 3/15/95	1:1	A	95672	sheet
				appd	Y.BELOPOLSKY 3/15/95				2 of 8
sheet index	revision sheet								

PDM: Rev:L 3 STATUS: Released cage code 2252 Printed Aug 01, 2010

ACAD

1 | 2

3 |

4

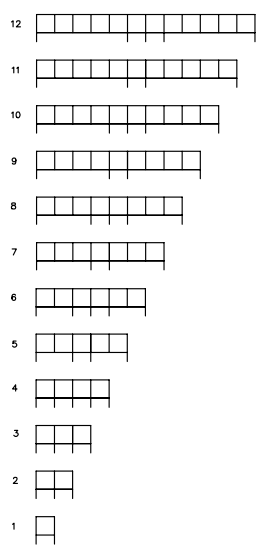
REAR SHIELD (VIEWED FROM PLUG ENTRY SIDE) GROUND SOLDERTAIL CONFIGURATION

CODE "Z" = 0

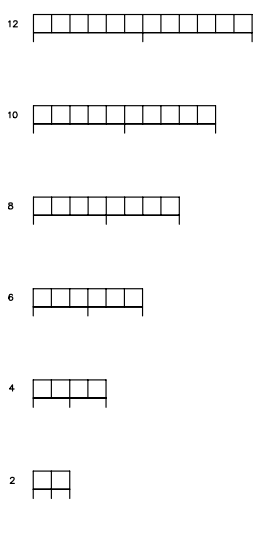
CODE "Z" = 1

CODE "Z" = 2

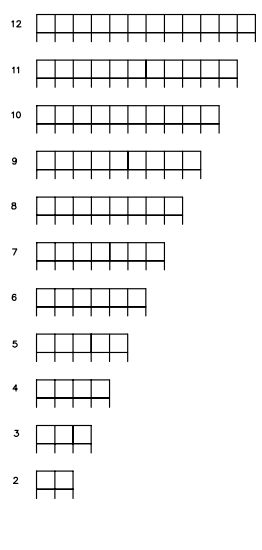
CODE "Z" = 3



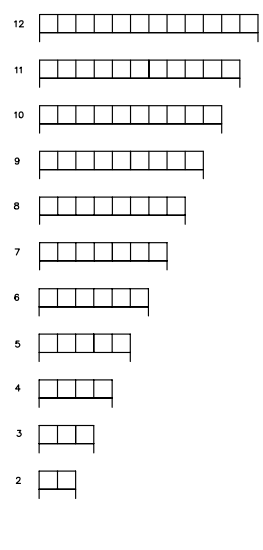
PCB LAYOUT SHEET 4



PCB LAYOUT SHEET 5



PCB LAYOUT SHEET 6



PCB LAYOUT SHEET 7

Tous droits strictement réservés. Reproduction ou communication à des tiers sans autorisation écrite de la propriété de FCI. Droits de reproduction FCI.



All rights strictly reserved. Reproduction or issue to third parties in any form or by any means without written authority from the proprietor. Property of FCI. Copyright FCI.

mat'l. code		tolerances unless otherwise specified		CUSTOMER COPY		FCI www.fciconnect.com		
ltr	ecn no	dr	date	linear	projection	title		
L				.XX±.13		R/A GANG JACK FILTER ASSY		
				.XXX±.051		8 POS SHIELDED SNAP PEG		
				0° ±2°		product family	MOD JACK	code
				dr	G.CLEMENS	6/30/99	size	dwg no
				enrg	B.BRUBAKER	6/30/99	scale	213
				chr	B.BRUBAKER	6/30/99	1:4	sheet
				appd	B.BRUBAKER	6/30/99	A	3 of 8
sheet index	revision sheet							

1 | 2

3 |

4

ACAD

PDM: Rev:L 3

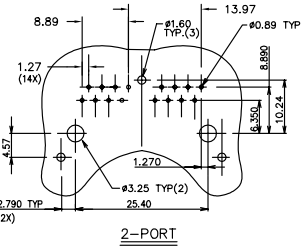
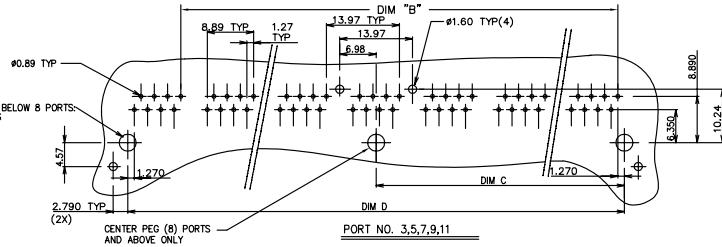
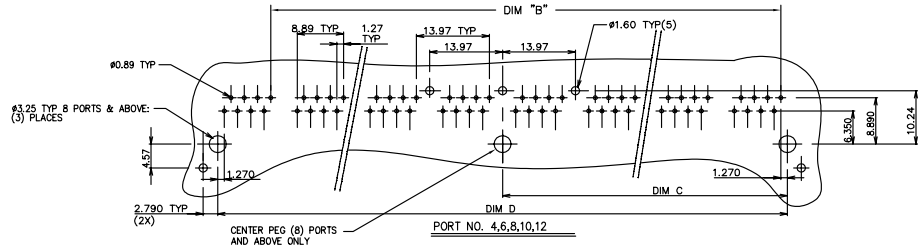
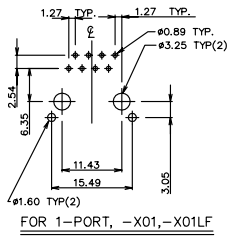
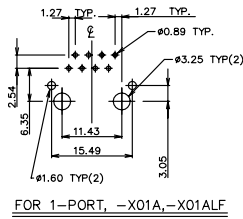
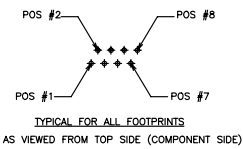
STATUS: Released

Printed: Aug 01, 2010

Tous droits strictement réservés. Reproduction ou communication à des tiers interdite sous quelque forme que ce soit sans autorisation écrite du propriétaire. Propriété de c FCI. Droits de reproduction FCI.



All rights strictly reserved. Reproduction or issue to third parties in any form whatever is not permitted without written authority from the proprietor. Property of FCI. Copyright FCI.



RECOMMENDED P.C.B LAYOUT
CODE "Z" = ∅ (STANDARD GROUND LEGS)

mat'l. code		tolerances unless otherwise specified		CUSTOMER COPY		FCI		www.fciconnect.com		
ltr	ecn no	dr	date	linear	.XX±.13	projection	title	product family	MOD JACK	code
L				angles	.XX±.051					
				dr	0° ±2°	MM	95672	sheet	4 of 8	
				engr	L.POTTIEGER 3/15/95					scale
				chr	Y.BELOPOLSKY 3/15/95	1:1				
				appd	Y.BELOPOLSKY 3/15/95					
sheet	revision									
index	sheet									

ACAD

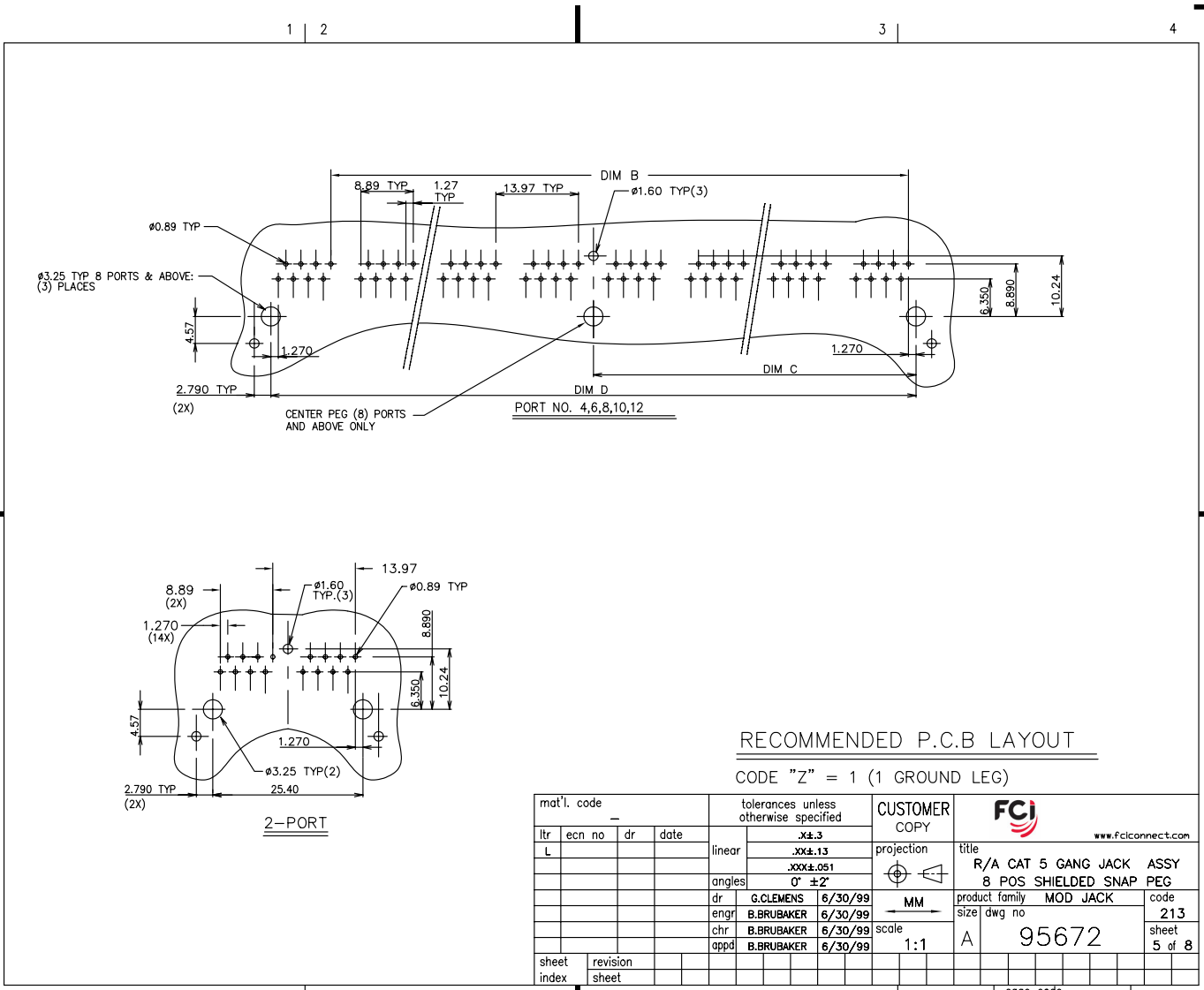
PDM: Rev:L 3

STATUS: Released 2252 Printed Aug 01, 2010

Tous droits strictement réservés. Reproduction ou communication à des tiers interdite sous quelque forme que ce soit sans autorisation écrite du propriétaire. Propriété de c FCI. Droits de reproduction FCI.



All rights strictly reserved. Reproduction or issue to third parties in any form whatever is not permitted without written authority from the proprietor. Property of FCI. Copyright FCI.



RECOMMENDED P.C.B LAYOUT

CODE "Z" = 1 (1 GROUND LEG)

mat'l. code		tolerances unless otherwise specified		CUSTOMER COPY		FCI		www.fciconnect.com	
ltr	ecn no	dr	date	linear	.XX±.13	projection	title	R/A CAT 5 GANG JACK ASSY	
L					.XXX±.051	⊕	8 POS SHIELDED SNAP PEG		
				angles	0° ±2'		product family	MOD JACK	code
				dr	G.CLEMENS 6/30/99	MM	size	dwg no	213
				engr	B.BRUBAKER 6/30/99	scale	A	95672	sheet
				chr	B.BRUBAKER 6/30/99	1:1			5 of 8
				appd	B.BRUBAKER 6/30/99				
sheet index	revision sheet								

ACAD

PDM: Rev:L 3

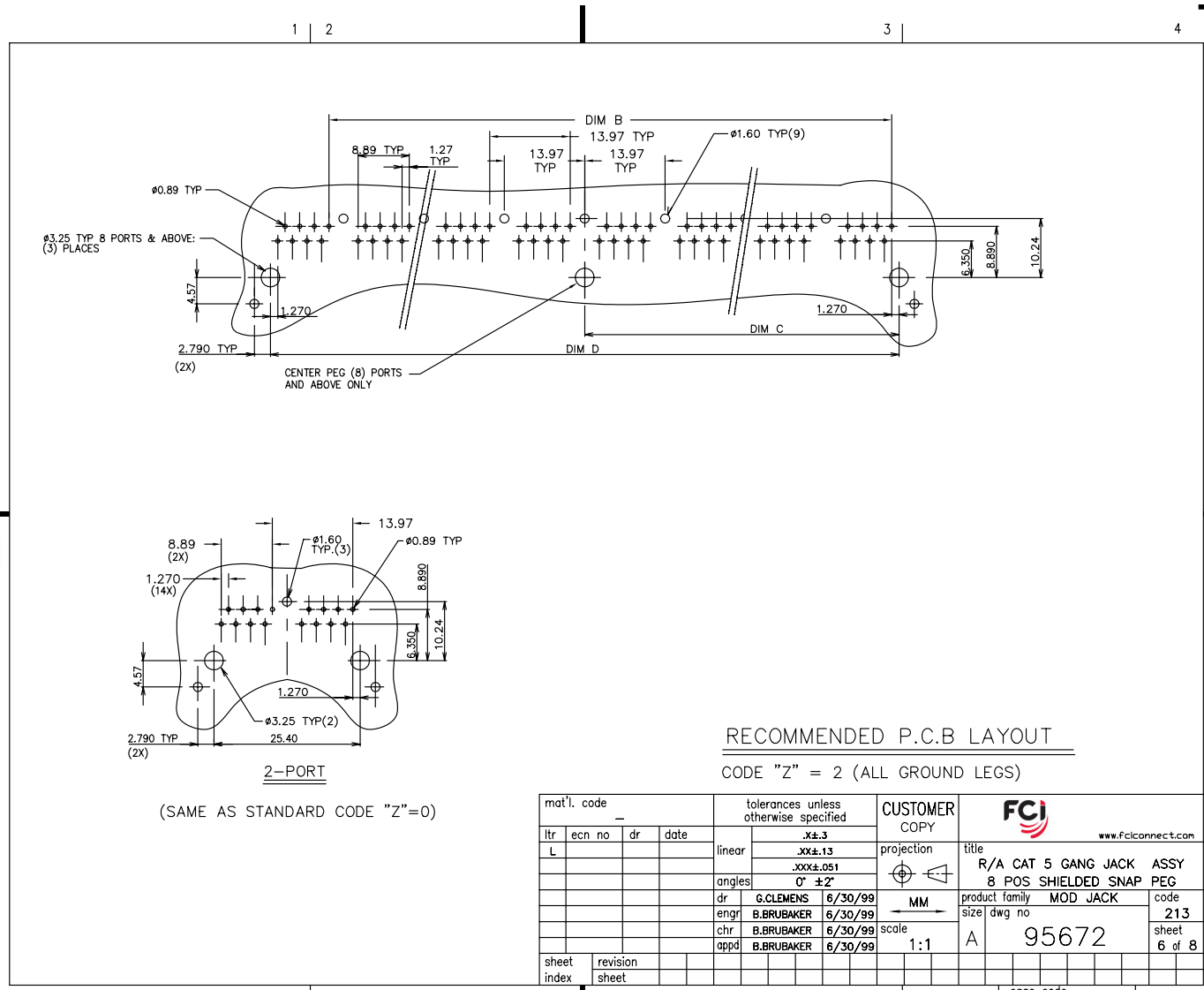
STATUS: Released

Printed: Aug 01, 2010

Tous droits strictement réservés. Reproduction ou communication à des tiers interdite sous quelque forme que ce soit sans autorisation écrite du propriétaire. Propriété de c FCI. Droits de reproduction FCI.



All rights strictly reserved. Reproduction or issue to third parties in any form whatever is not permitted without written authority from the proprietor. Property of FCI. Copyright FCI.



(SAME AS STANDARD CODE "Z"=0)

RECOMMENDED P.C.B LAYOUT

CODE "Z" = 2 (ALL GROUND LEGS)

mat'l. code		tolerances unless otherwise specified		CUSTOMER COPY		www.fciconnect.com	
ltr	ecn no	dr	date	linear	projection	title	
L				.XX±.13	⊕	R/A CAT 5 GANG JACK ASSY	
				.XXX±.051	⊕	8 POS SHIELDED SNAP PEG	
				angles	0° ±2'	product family	MOD JACK
				dr	G.CLEMENS	6/30/99	code
				engr	B.BRUBAKER	6/30/99	213
				chr	B.BRUBAKER	6/30/99	size
				appd	B.BRUBAKER	6/30/99	dwg no
sheet	revision			scale	1:1	A	95672
index	sheet						6 of 8

ACAD

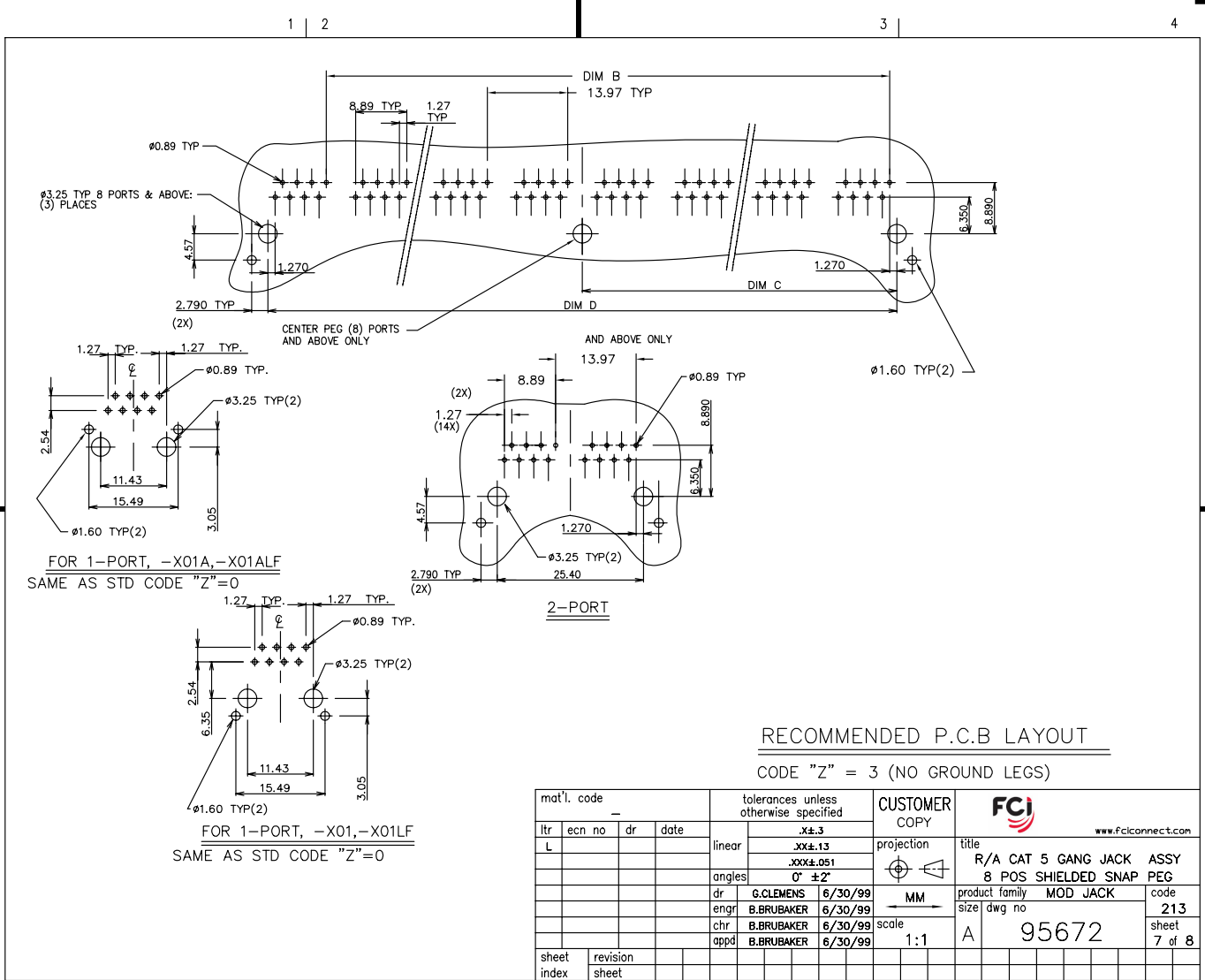
PDM: Rev:L 3

STATUS: Released cage code 2252 Printed: Aug 01, 2010

Tous droits strictement réservés. Reproduction ou communication à des tiers interdite sous quelque forme que ce soit sans autorisation écrite du propriétaire. Propriété de c FCI. Droits de reproduction FCI.



All rights strictly reserved. Reproduction or issue to third parties in any form whatever is not permitted without written authority from the proprietor. Property of FCI. Copyright FCI.



RECOMMENDED P.C.B LAYOUT

CODE "Z" = 3 (NO GROUND LEGS)

mat'l. code		tolerances unless otherwise specified		CUSTOMER COPY	FCI www.fciconnect.com	
ltr	ecn no	dr	date	linear	projection	title
L				linear	MM	R/A CAT 5 GANG JACK ASSY 8 POS SHIELDED SNAP PEG
				angles	MM	product family MOD JACK
				dr	scale	size dwg no
				engr	1:1	213
				chr		7 of 8
				appd		
sheet index	revision sheet					

PDM: Rev:L 3

STATUS: Released
cage code 2252
Printed: Aug 01, 2010

ACAD

Tous droits strictement réservés. Reproduction ou communication à des tiers interdite sous quelque forme que ce soit sans autorisation écrite du propriétaire. Propriété de c FCI. Droits de reproduction FCI.



All rights strictly reserved. Reproduction or issue to third parties in any form whatever is not permitted without written authority from the proprietor. Property of FCI. Copyright FCI.

PRODUCT No.	NOTE 8	PORTS No	DIM A ± 0.60 -0.00	DIM B	DIM C ± 0.10	DIM D ± 0.15	GROUND LEG NUMBER ON THE BACK (VIEW B) SEE DIAGRAM ON SH. 3
95672-X01H		1	15.74	-	5.715	11.43	
95672-X01AH		1	15.74	-	5.715	11.43	
95672-X02H-YZ		2	30.98	13.97	12.700	25.40	
95672-X03H-YZ		3	44.95	27.94	19.685	39.37	
95672-X04H-YZ		4	58.92	41.91	26.670	53.34	
95672-X05H-YZ		5	72.89	55.88	33.655	67.31	
95672-X06H-YZ		6	86.86	69.85	40.640	81.28	
95672-X07H-YZ		7	100.83	83.82	47.625	95.25	
95672-X08H-YZ		8	114.80	97.79	54.610	109.22	
95672-X09H-YZ		9	128.77	111.76	61.595	123.19	
95672-X10H-YZ		10	142.74	125.73	68.580	137.16	
95672-X11H-YZ		11	156.71	139.70	75.565	151.13	
95672-X12H-YZ		12	170.68	153.67	82.550	165.10	

NOTE 5
NOTE 5

NOTES:

1. RECOMMENDED P.C.B THICKNESS 1.60 MM
2. HOUSING MAT'L: HIGH TEMP RESIN
3. CONTACTS: PHOS BRONZE ALLOY UNS-C51000, \emptyset 0.460 ROUND WIRE, PLATING SEE TABLE.
4. SHIELDING MATERIAL: BRASS ALLOY .25 MM THICK SHIELDING PLATING: NICKEL UNDERPLATE 40u" MIN FINISH OF BRIGHT TIN LEAD 100u" MIN
LEAD FREE OPTION
SHIELDING PLATING: NICKEL UNDERPLATE 40u" MIN FINISH OF BRIGHT PURE TIN 100u" MIN
- ⑤ SEE SNGL. PORT GROUND LEG OPTIONS, SIDE VIEW PG.1 FOR DETAILS.
6. ALL DIMENSIONS IN MILLIMETERS.
- ⑦ COMPANY LOGO LOCATED IN THIS AREA.
- ⑧ ADD LF SUFFIX AT THE END OF PART NUMBER FOR LEAD FREE OPTION.
9. THE HOUSING WILL WITHSTAND EXPOSURE TO 260°C PEAK TEMPERATURE FOR 15 SECONDS IN A WAVE SOLDER APPLICATION WITH A 1.5mm MINIMUM THICK CIRCUIT BOARD. SEE APPLICATION NOTES/PROCEDURES IF THEY ARE AVAILABLE.
10. THIS PRODUCT MEETS EUROPEAN UNION DIRECTIVES AND OTHER COUNTRY REGULATION AS DESCRIBED IN GS-22-008.
- ⑪ PLATING OPTIONS:
MAY BE EITHER GOLD OR GXT PLATED AT MANUFACTURER'S OPTION.

MEETS PIP PROCESS PRODUCT NO.

PLATING CODE X	PLATING ⑪
0	30u" G.X.T.
1	15u" GOLD.
3	30u" GOLD.
5	50u" GOLD.

FRONT SHIELD CODE Y
0 = STANDARD GRND. TABS
1 = NO GRND. TABS

REAR SHIELD CODE Z
0 = STANDARD GRND. LEGS
1 = 1 STANDARD GRND. LEG
2 = ALL GRND. LEGS
3 = NO GRND. LEGS

NOTE: PLEASE CHECK FOR AVAILABILITY, NOT ALL OPTIONS AVAILABLE.

mat'l. code		tolerances unless otherwise specified		CUSTOMER COPY		FCI		www.fciconnect.com	
ltr	ecn no	dr	date	linear	projection	title			
						R/A GANG JACK FILTER ASSY			
				angles		8 POS SHIELDED SNAP PEG			
				dr	L.POTTIEGER	3/15/95	product family	MOD JACK	code
				enr	Y.BELOPOLSKY	3/15/95	size	dwg no	213
				chr	Y.BELOPOLSKY	3/15/95	scale	95672	sheet
				appd	Y.BELOPOLSKY	3/15/95	1:1	A	8 of 8
sheet index	revision sheet								

1 | 2

ACAD

PDM: Rev:L 3

STATUS: Released 2252 Printed Aug 01, 2010