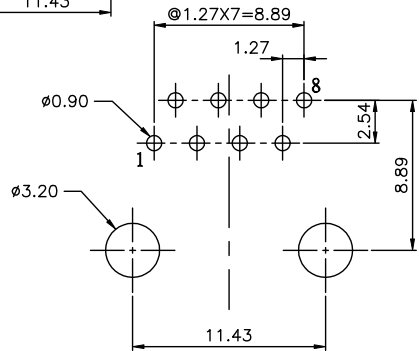
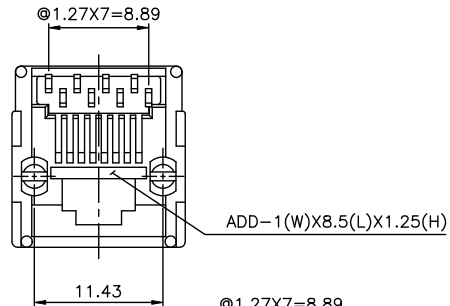
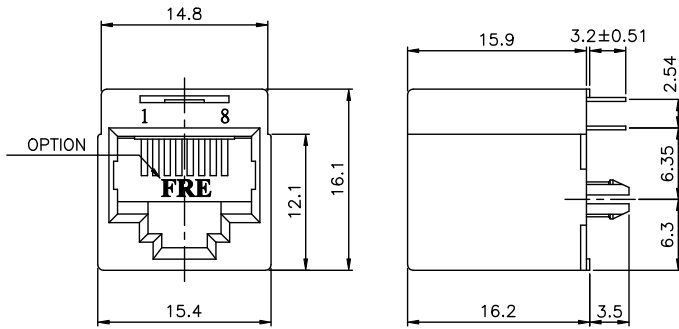


D1RFRD006

REVISION RECORD				
REV	ECO	DESCRIPTION	DRFT	CHKD
△		DRAWING MODIFY		CZH 2/20/2002
△		NOTES MODIFY		ARC08 10/22/04



PC Board Layout Component Side Shown

NOTES:

ELECTRICAL:

1. VOLTAGE RATING : 125 VAC RMS.
2. CURRENT RATING : 1.5 AMP.
3. CONTACT RESISTANCE : 30 MILLIOHMS MAX.
4. INSULATION RESISTANCE: 1000 MEGOHMS MIN @ 500 VDC.
5. DIELECTRIC STRENGTH : 1000 VAC RMS 60Hz, 1MIN.

MECHANICAL:

1. HOUSING MATERIAL : GLASS FILLED POLYESTER UL94V-0.
2. CONTACT MATERIAL : PHOSPHOR BRONZE t=0.35mm.
3. PLATING : GOLD PLATING OVER NICKEL.
4. OPERATING LIFE : 750 CYCLES MIN.
5. PCB RETENTION PRE-SOLDER : 1 LB MIN.
6. PCB RETENTION POST-SOLDER: 10 LBS MIN.

ENVIRONMENTAL:

1. STORAGE : -40°C TO +85°C.
2. OPERATION: -40°C TO +85°C.

MATES WITH MODULAR PLUG CONFORMING TO FCC PART 68, SUBPART F.

CUL FILE NO. E163191

PART NUMBER: E528X-X00X4X

- | | | |
|-----------------|-------------|--------|
| 8--BP8C | 1- 3u" | 2- 6u" |
| 6--BP6C | 3-15u" | 4-30u" |
| 4--BP4C | 5-50u" | |
| 2--BP2C | 0--A06-0100 | |
| △ 3-W/ FRE LOGO | 1--A06-0080 | |
| R-W/O FRE LOGO | | |

DETACHED LIST	MM (INCH)	DFTO RACHEL DATE 10/15/2001	FULL RISE ELECTRONIC CO., LTD	
	TOLERANCES EXCEPT AS NOTED	CHKD SAMMY DATE 2004/11/18		
	MM	MFO DATE	TITLE	
	.0 ± 0.2 ±	APPLVLSUBING DATE 2004/11/18	RJ45 TOP ENTRY PCB MODULAR JACK(DIP TYPE)	
.00 ± 0.15 ±	MATERIAL :	DRAWING NO. GE523045	SIZE	REV
.000 ± 0.075 ±	QT'Y :	/PART NO. SEE NOTE	A3	2
ANGLES ± 0.5	FINISH :	DO NOT SCALE DRAWING	SHEET	OF
THIRD ANGLE PROJECTION	SCALE : 3:1			

8 | 7 | 6 | 5 | 4 | 3 | 2 | 1