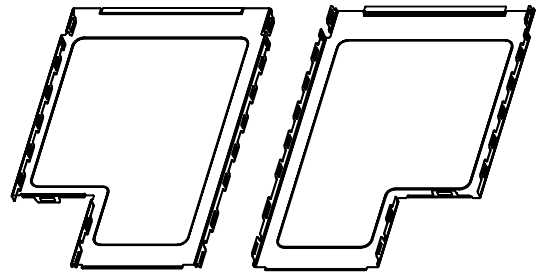
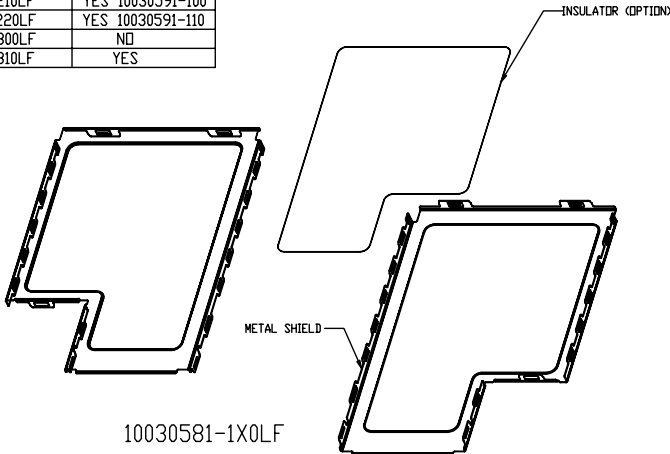
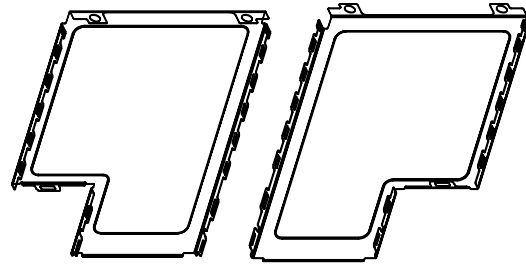


PRODUCT NO.	INSULATOR
10030581-100LF	NO
10030581-110LF	YES
10030581-200LF	NO
10030581-210LF	YES 10030591-100
10030581-220LF	YES 10030591-110
10030581-300LF	NO
10030581-310LF	YES



10030581-2X0LF



10030581-3X0LF

- NOTES:
- MATERIAL PROPERTIES:  
 METAL SHIELD : STAINLESS STEEL, SURFACE FINISH : MATTE.  
 INSULATOR : POLYESTER FILM WITH ADHESIVE, 3M 1350 OR EQUIVALENT.
  - PART NUMBER SCHEME:  
 10030581- X X 0 L F  
     X : RESERVED  
     X : INSULATOR  
       0 : NO  
       1 : STANDARD  
     L : SHIELD TYPE NO.  
       1 : STANDARD (CLOSE-END)  
       2 : EXTENDED (OPEN-END)  
       3 : CUSTOMIZED

- PRODUCT PERFORMANCE PER SPEC. GS-12-292.
- PACKAGING SPEC. PER GS-14-927.
- THIS PRODUCT IS ROHS COMPLIANT, AND MEETS EUROPEAN UNION DIRECTIVES AND OTHER COUNTRY REGULATIONS AS PER GS-22-008.

rev	ecn no	dr	date
H	N07-0182	MSH	2007-08-08
D	T05-0228	D T	2005-10-18
E	T06-0015	D T	2006-01-16
F	T06-0057	D T	2006-04-17
G	T06-0144	D T	2006-08-02

www.fciconnect.com		surface	tolerance std	projection	MM
Dr DAVID TENG 2004-10-04		TOLERANCES UNLESS OTHERWISE SPECIFIED		size	Scale
Eng DAVID TENG 2004-10-04		ANGULAR	0.X ±0.30	A4	1.000
Chr PAUL WANG 2004-10-04		LINEAR	0.XX ±0.15	ECN	*
Appr JOSEPH HSIA 2004-10-04		0° ±2°	0.XXX ±0.08	Spec ref	*
title TOP SHIELD SUB-ASSEMBLY		Product family		10030581	Rev. H
EXPRESSCARD/54 MODULE CARD KIT		catalog no 10030581		CUSTOMER	sheet 1 of 5

3 PDM: Rev:H STATUS Released 4 Printed: Oct 12, 2010

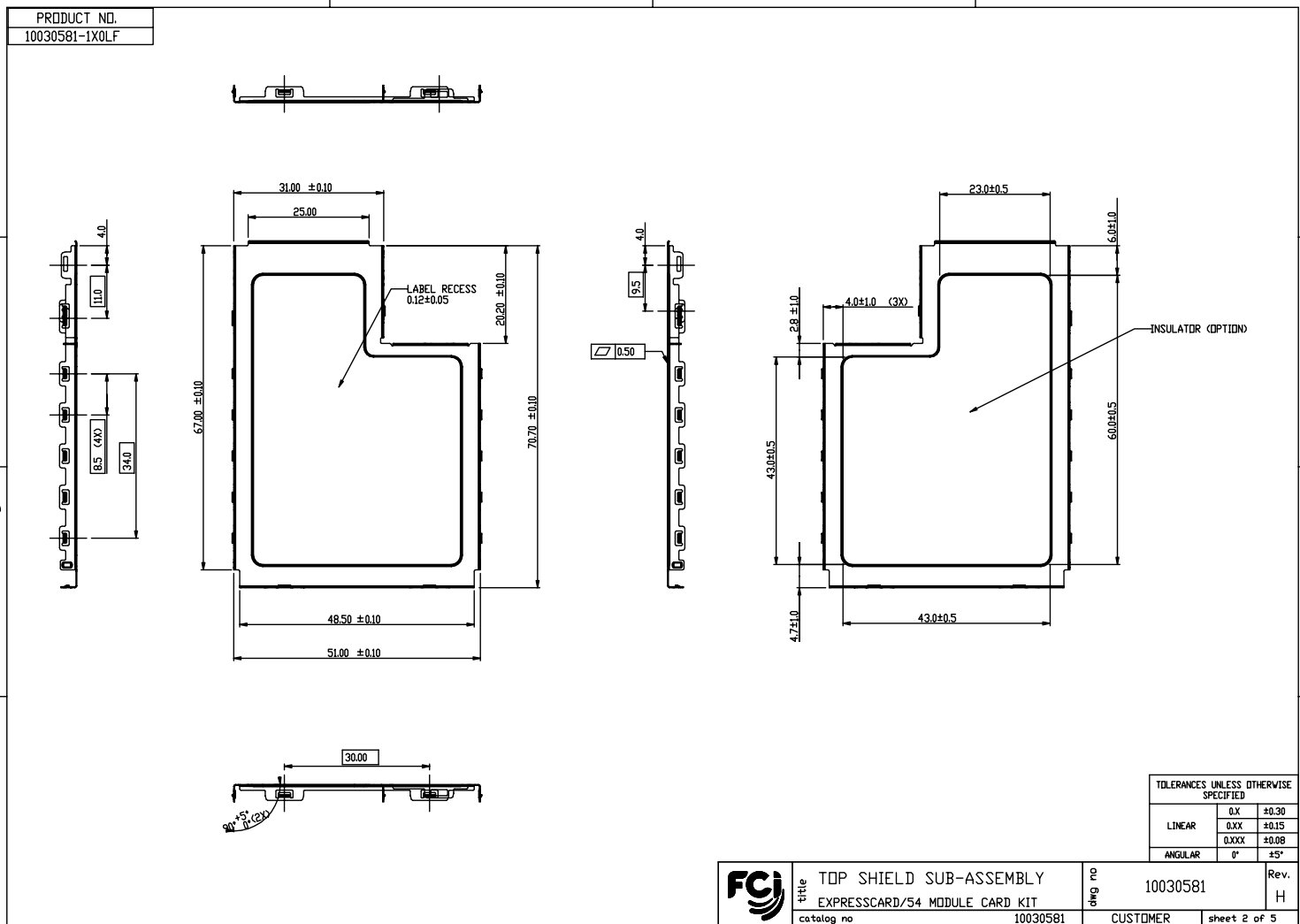


Copyright FCI.

REV F - 088-0417



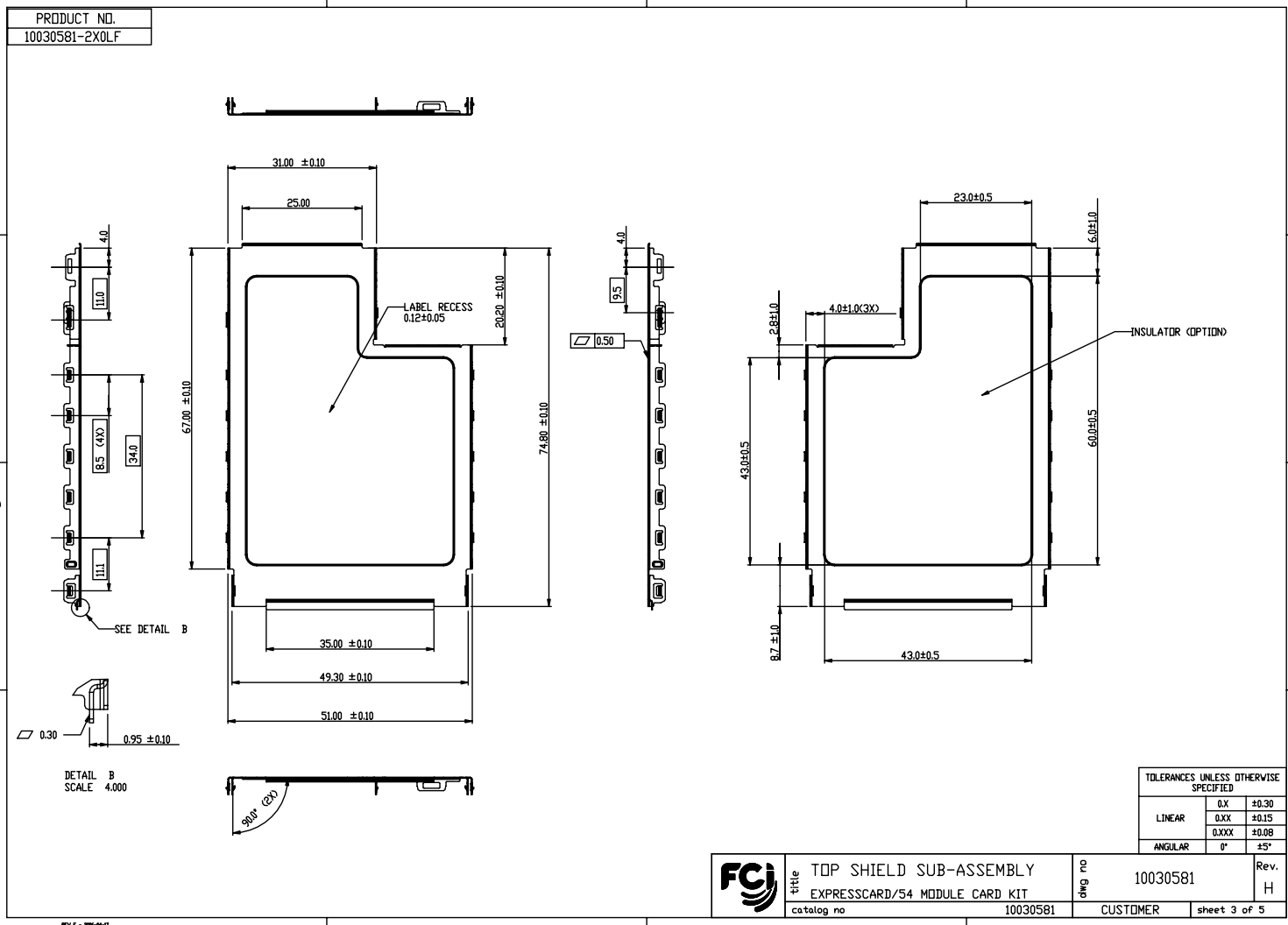
Copyright FCJ.



title	TOP SHIELD SUB-ASSEMBLY	part no	10030581	Rev.	H
	EXPRESSCARD/54 MODULE CARD KIT	customer			
catalog no	10030581	sheet	2 of 5		



Copyright FCI.



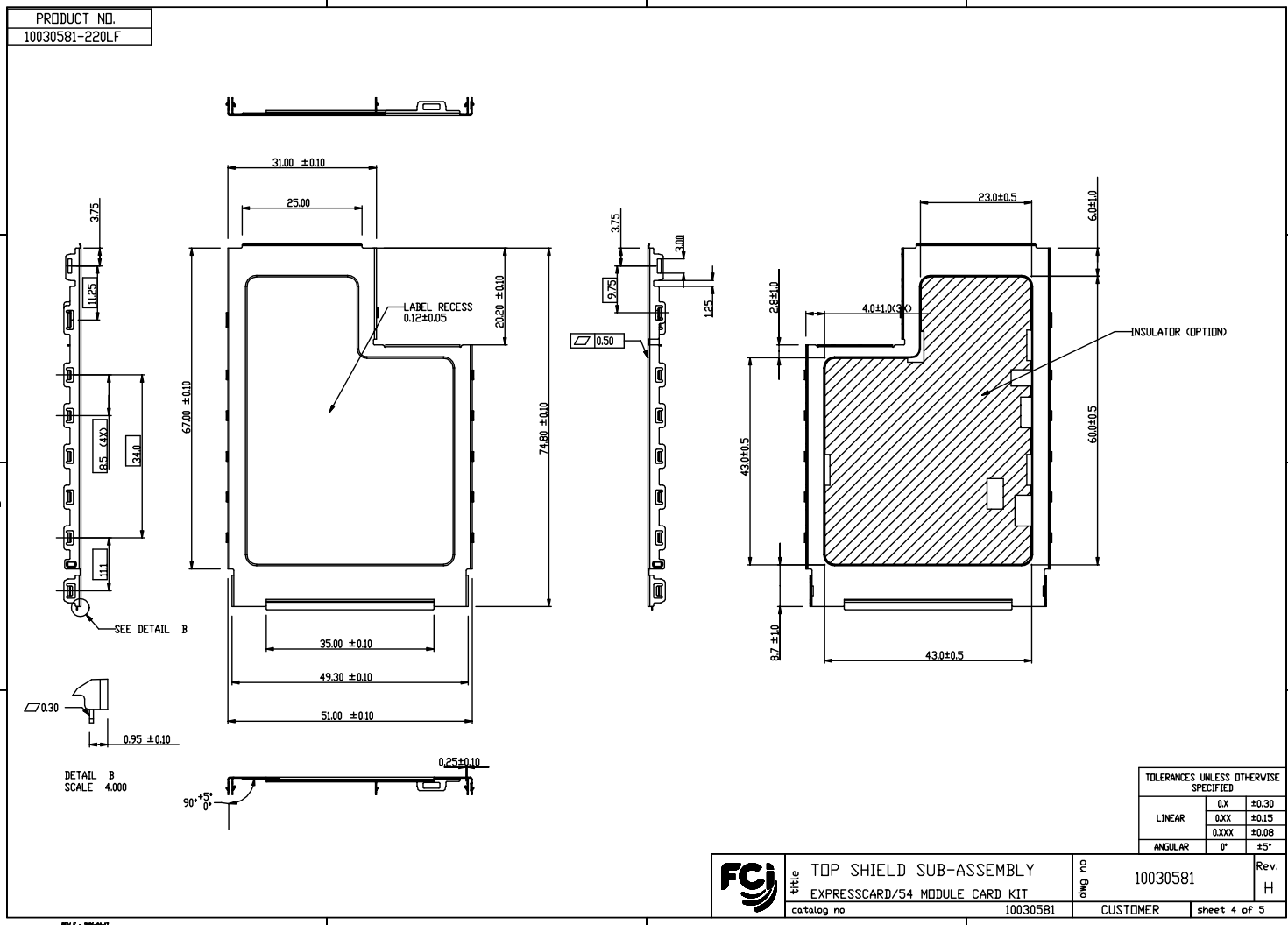
TOLERANCES UNLESS OTHERWISE SPECIFIED		
LINEAR	0.X	±0.30
	0.XX	±0.15
ANGULAR	0.XXX	±0.08
	0°	±5°

	title	TOP SHIELD SUB-ASSEMBLY	DWG NO	10030581	Rev.	H
	catalog no	10030581				

3 PDM: Rev:H STATUS Released 4 Printed: Oct 12, 2010



Copyright FCI



TOLERANCES UNLESS OTHERWISE SPECIFIED		
LINEAR	0.X	±0.30
	0.XX	±0.15
ANGULAR	0.XXX	±0.08
	0°	±5°

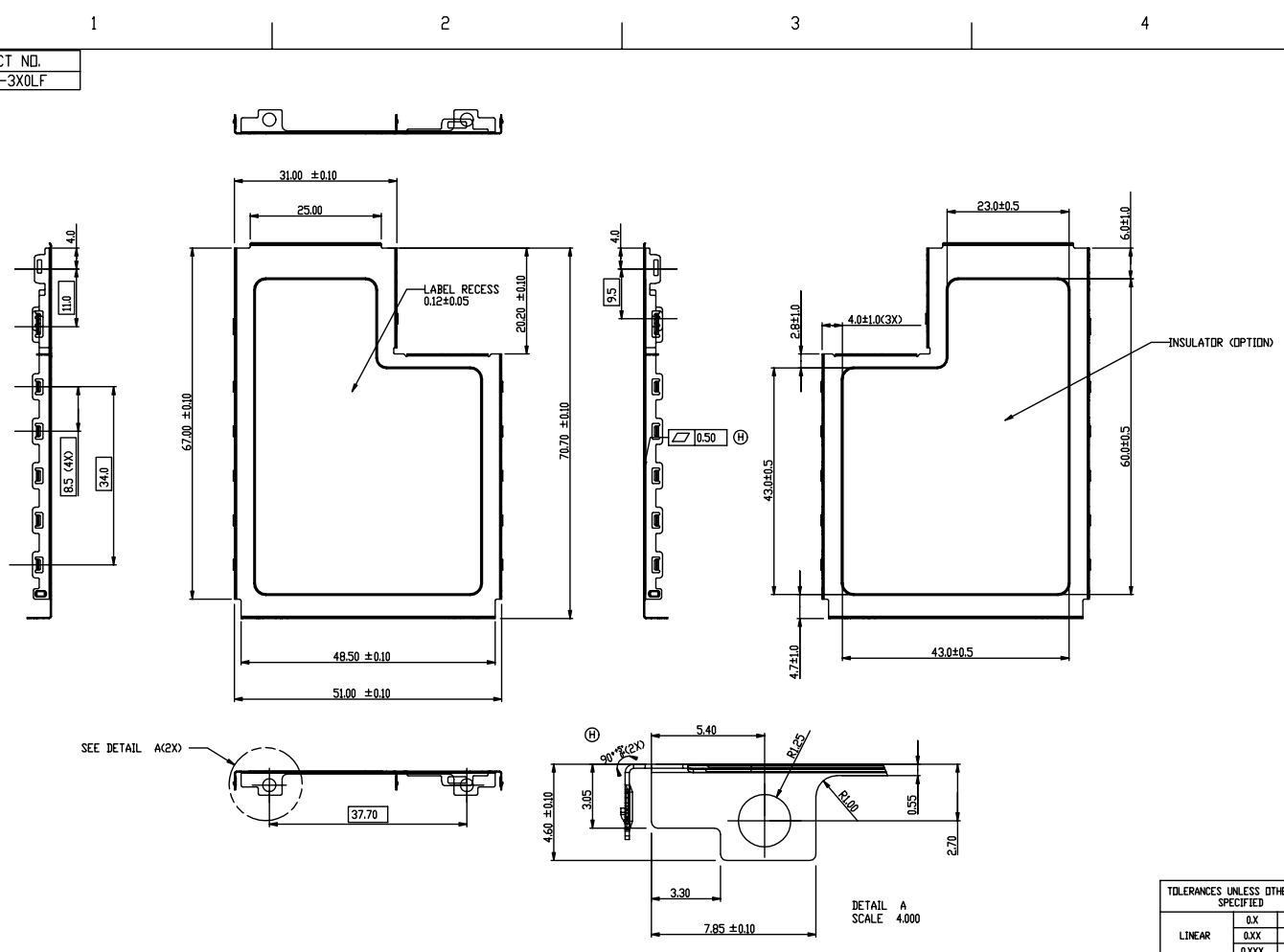
	title	TOP SHIELD SUB-ASSEMBLY	part no	10030581	Rev.	H
	catalog no	EXPRESSCARD/54 MODULE CARD KIT	10030581	CUSTOMER	sheet 4 of 5	

3 PDM: Rev:H STATUS Released 4 Printed: Oct 12, 2010



Copyright FCJ.

PRODUCT NO.
10030581-3XOLF



TOLERANCES UNLESS OTHERWISE SPECIFIED		
LINEAR	0.X	±0.30
	0.XX	±0.15
	0.XXX	±0.08
ANGULAR	0°	±2°

	title	TOP SHIELD SUB-ASSEMBLY	DWG NO	10030581	Rev	H
	catalog no	10030581		CUSTOMER		sheet 5 of 5

3 PDM: Rev:H STATUS Released 4 Printed: Oct 12, 2010