

Features

- Compact
- Lightweight
- Long life
- Infinite resolution
- Free shaft rotation
- AC or DC
- Shaft options available
- Flexible wire leads
- Economical
- RoHS compliant*

3048 Linear Motion Potentiometer

Specifications†

Standard Electrical Travel

..... 0.2, 0.3, 0.4, 0.5 in.
(5.08, 7.62, 10.16, 12.70 mm)

Standard Resistances

..... 1K ohms to 50K ohms (± 20 %)

Independent Linearity..... ± 5 %

Resolution..... Infinite

Power Rating @ 70 °C (158 °F)

Range 2, 3..... 0.12 watt

Range 4, 5..... 0.25 watt

Operating Temperature Range

..... -55 °C to +125 °C

Temperature Coefficient... 1000 PPM/°C

Insulation Resistance..... 50 megohms

@ 500 VDC

Backlash..... Negligible

Shaft Actuating Force..... 4 oz. max.

@ 70 °F

Life..... 500,000 cycles

Shock..... 50 G for 7 msec

Vibration..... 20 G, 10-2 kHz

Marking..... Manufacturer's trademark,

resistance code, wiring diagram,

date code, manufacturer's model

number and style

Specifications are typical. Contact factory for special requirements.

† Specifications applicable from 5 % to 95 % of electrical travel.

How to Order

3048 L - 2 - 502

Model

Style

Range (Travel)

2 = 0.2 " (5.08 mm)

3 = 0.3 " (7.62 mm)

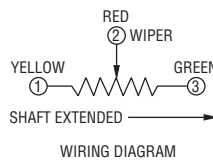
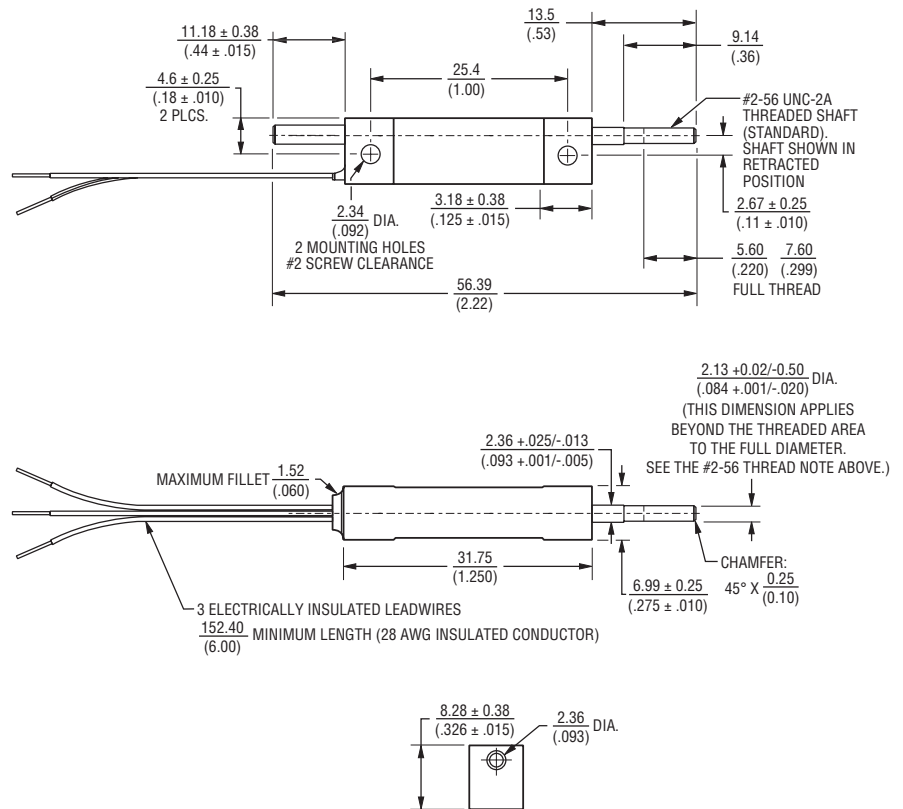
4 = 0.4 " (10.16 mm)

5 = 0.5 " (12.70 mm)

Resistance Value

Stainless steel shaft is available upon request.

Product Dimensions



TOLERANCES: ± .010 (0.25) EXCEPT WHERE NOTED

DIMENSIONS: $\frac{\text{MM}}{\text{(INCHES)}}$

Standard Resistance Table

Resistance (Ohms)	Resistance Code
1,000	102
2,500	252
5,000	502
10,000	103
20,000	203
50,000	503

REV. 07/09

*RoHS Directive 2002/95/EC Jan 27 2003 including Annex. Specifications are subject to change without notice.

Customers should verify actual device performance in their specific applications