

THIS COPY IS PROVIDED ON A RESTRICTED BASIS AND IS NOT TO BE USED IN ANY WAY DETRIMENTAL TO THE INTERESTS OF PANDUIT CORP.

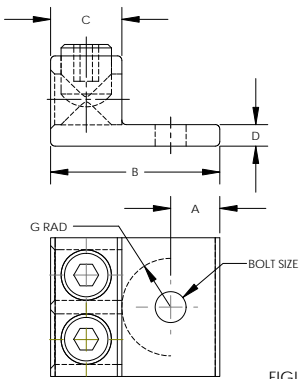


FIGURE 1

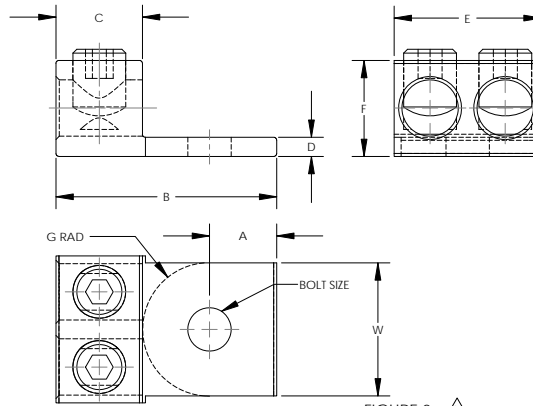
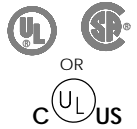


FIGURE 2

NOTES:

1. MATERIAL:
BODY - ALUMINUM, TIN PLATED
SCREW - ALUMINUM, TIN PLATED
2. UL LISTED, CSA CERTIFIED, OR cULus FOR USE UP TO 600V & TEMPERATURE RATED 90°C (AL9CU)
3. DUAL RATED FOR USE WITH COPPER OR ALUMINUM STRANDED CODE CONDUCTOR
4. THESE PARTS ARE RoHS COMPLIANT
5. USE OF OXIDE INHIBITING JOINT COMPOUND LIKE PANDUIT CMP-100 RECOMMENDED FOR PAD TO PAD AND CONDUCTOR SURFACES
6. SEE PACKAGING LABEL FOR TIGHTENING TORQUE INFORMATION
7. PKG QTY:
6 - 6



PART NUMBER	FIG.	WIRE RANGE COPPER/ALUMINUM	WIRE STRIP LENGTH IN[mm]	STUD SIZE IN	DIMENSIONS - IN [mm]								HEX KEY*	AGENCY
					A	B	C	D	E	F	G	W		
LAM2A 10-14-6Y	1	14 AWG - 10 AWG	.62 [15.7]	14	0.43 [10.8]	1.47 [37.3]	0.62 [15.7]	0.9 [4.8]	1.13 [28.6]	0.78 [19.9]	0.42 [10.7]	N/A	SLOTTED	cULus
LAM2A 2/0-14-6Y	1	14 AWG - 2/0 AWG	.62 [15.7]	14	0.43 [10.8]	1.47 [37.3]	0.62 [15.7]	0.9 [4.8]	1.20 [30.6]	0.78 [19.9]	0.42 [10.7]	N/A	3/16	cULus
LAM2A 250-38-6Y	2	6 AWG - 250 kcmil	100 [25.4]	3/8	0.51 [13.0]	2.56 [65.1]	1.00 [25.4]	0.25 [6.4]	1.64 [41.7]	1.19 [30.2]	1.05 [26.7]	1.50 [38.0]	5/16	cULus
LAM2A 350-12-6Y	2	6 AWG - 350 kcmil	113 [28.6]	1/2	0.88 [22.2]	2.87 [73.0]	1.13 [28.6]	0.25 [6.4]	1.91 [48.6]	1.25 [31.8]	0.86 [21.8]	1.73 [44.0]	5/16	cULus
LAM2A 600-12-6Y	2	2 AWG - 600 kcmil	138 [34.9]	1/2	0.63 [16.0]	3.19 [81.0]	1.38 [34.9]	0.44 [11.2]	2.38 [60.5]	1.56 [39.6]	1.19 [30.2]	2.00 [50.8]	3/8	UL & CSA
LAM2A 1000-58-6Y	1	500 kcmil - 1000 kcmil	163 [41.4]	5/8	0.88 [22.2]	3.50 [88.9]	1.63 [41.4]	0.50 [12.7]	3.50 [88.9]	1.94 [49.3]	1.00 [25.4]	N/A	3/8	UL & CSA

* HEX SIZE MAY DIFFER FROM CHART. DIFFERENCE IN SIZE WILL NOT AFFECT FIT, FORM, OR FUNCTION OF PART

10N006AT-NC/01B

										PANDUIT CORP. TINLEY PARK, ILLINOIS				
										LAM2A SERIES ALUMINUM MECHANICAL LUGS CUSTOMER DRAWING				
										UNLESS OTHERWISE SPECIFIED DIMENSIONAL TOLERANCES ARE: (.X) ± ... (XXX) ± ... (XX) ± ... ANGLES ± ...				
										UNLESS OTHERWISE SPECIFIED, ALL DIMENSIONS ARE GIVEN IN INCHES, THIRD ANGLE PROJECTION				
										DRAWN BY JHNU		SCALE NONE		
										DATE 2/06		DRAWING NO / CAD FILE 10N006AT-NC		
										MATERIAL SEE NOTES		DWG B SIZE		
06	10/10	JHNU	JHNU	M. ADDED AGENCY COLUMN TO TABLE L. REMOVED MARKINGS FROM PART VIEWS						10N006AT-NC	FLD	FLD	DATE	2/06
REV	DATE	BY	CHK	DESCRIPTION						ECN	-R	SUP	CHK'D	

