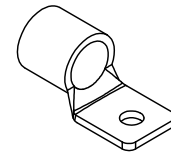
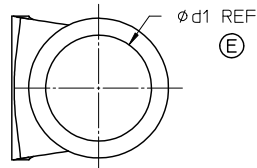


19318-4012 SHOWN

NOTES:

1. MATERIAL: TIN PLATED COPPER
2. PRODUCT IS ROHS COMPLIANT
3. TERMINAL IS MARKED AS SHOWN W/ CORRESPONDING WIRE SIZE



MATERIAL NO.	WIRE RANGE		A		B		d1 $\phi$		d2 $\phi$		E		L		mm / inch	
	MCM/AWG	mm <sup>2</sup>	mm	inch	mm	inch	mm	inch	mm	inch	mm	inch	mm	inch	t	t
193180026	2 AWG	26.7-42.4	30.0	1.18	12.0	0.47	9.4	0.37	6.4	0.25	14.0	0.55	36.0	1.42	1.8	0.071
193180108	1/0 AWG	42.4-60.6	38.7	1.52	16.0	0.63	11.4	0.45	8.4	0.33	18.0	0.71	48.0	1.89	2.0	0.079
193180110	1/0 AWG	42.4-60.6	38.7	1.52	16.0	0.63	11.4	0.45	10.5	0.41	18.0	0.71	48.0	1.89	2.0	0.079
193180308	3/0 AWG	76.3-96.3	40.7	1.60	20.0	0.79	14.5	0.57	8.4	0.33	18.0	0.71	50.5	1.97	2.3	0.091
193180310	3/0 AWG	76.3-96.3	40.7	1.60	20.0	0.79	14.5	0.57	10.5	0.41	20.0	0.79	50.0	1.97	2.3	0.091
193180312	3/0 AWG	76.3-96.3	40.7	1.60	20.0	0.79	14.5	0.57	13.0	0.51	20.0	0.79	50.0	1.97	2.3	0.091
193180408	4/0 AWG	96.3-117	41.4	1.63	22.0	0.87	16.4	0.65	8.4	0.33	21.0	0.83	52.0	2.05	2.6	0.10
193180410	4/0 AWG	96.3-117	41.4	1.63	22.0	0.87	16.4	0.65	10.5	0.41	21.0	0.83	52.0	2.05	2.6	0.10
193180412	4/0 AWG	96.3-117	41.4	1.63	22.0	0.87	16.4	0.65	13.0	0.51	21.0	0.83	52.0	2.05	2.6	0.10
193181010	250-300MCM	117-152	47.5	1.87	25.0	0.98	19.5	0.77	10.5	0.41	27.0	1.06	60.0	2.36	3.2	0.13
193181012	250-300MCM	117-152	47.5	1.87	25.0	0.98	19.5	0.77	13.0	0.51	27.0	1.06	60.0	2.36	3.2	0.13
193183010	350-450MCM	193-242	56.0	2.20	36.0	1.42	24.0	0.94	10.5	0.41	31.5	1.24	72.0	2.83	4.0	0.16
193183012	350-450MCM	193-242	56.0	2.20	36.0	1.42	24.0	0.94	13.0	0.51	31.5	1.24	72.0	2.83	4.0	0.16
193184010	500-600MCM	242-325	67.0	2.64	38.0	1.50	28.0	1.10	10.5	0.41	35.5	1.40	84.0	3.31	4.5	0.18
193184012	500-600MCM	242-325	67.0	2.64	38.0	1.50	28.0	1.10	13.0	0.51	35.5	1.40	84.0	3.31	4.5	0.18

ENTER DESCRIPTION EC NO: WNAZ009-0806 2009/06/05 DRAWN BY: MODELL 2009/06/08 CHKD: APPR:RDEROSS 2009/06/08 REV DESCRIPTION	QUALITY SYMBOLS	GENERAL TOLERANCES (UNLESS SPECIFIED)	DIMENSION STYLE	SCALE	DESIGN UNITS	THIRD ANGLE PROJECTION
	$\nabla=0$ $\nabla=0$	mm INCH	MM/IN	1:1	METRIC	DRAWN BY: MODELL DATE: 2009/02/18 CHECKED BY: RDEROSS DATE: 2009/02/18 APPROVED BY: RDEROSS DATE: 2009/02/18
	4 PLACES ± --- ± --- 3 PLACES ± --- ± --- 2 PLACES ± --- ± --- 1 PLACE ± --- ± --- ANGULAR ± ---°	DRAWN BY: MODELL DATE: 2009/02/18 CHECKED BY: RDEROSS DATE: 2009/02/18 APPROVED BY: RDEROSS DATE: 2009/02/18	MATERIAL NO. SEE CHART	TITLE SL SERIES SQUARE TYPE 2 AWG TO 600 MCM MOLEX INCORPORATED		
	DRAFT WHERE APPLICABLE MUST REMAIN WITHIN DIMENSIONS	MATERIAL NO. SEE CHART	DOCUMENT NO. SD-19318-001	SHEET NO. 1 OF 1		