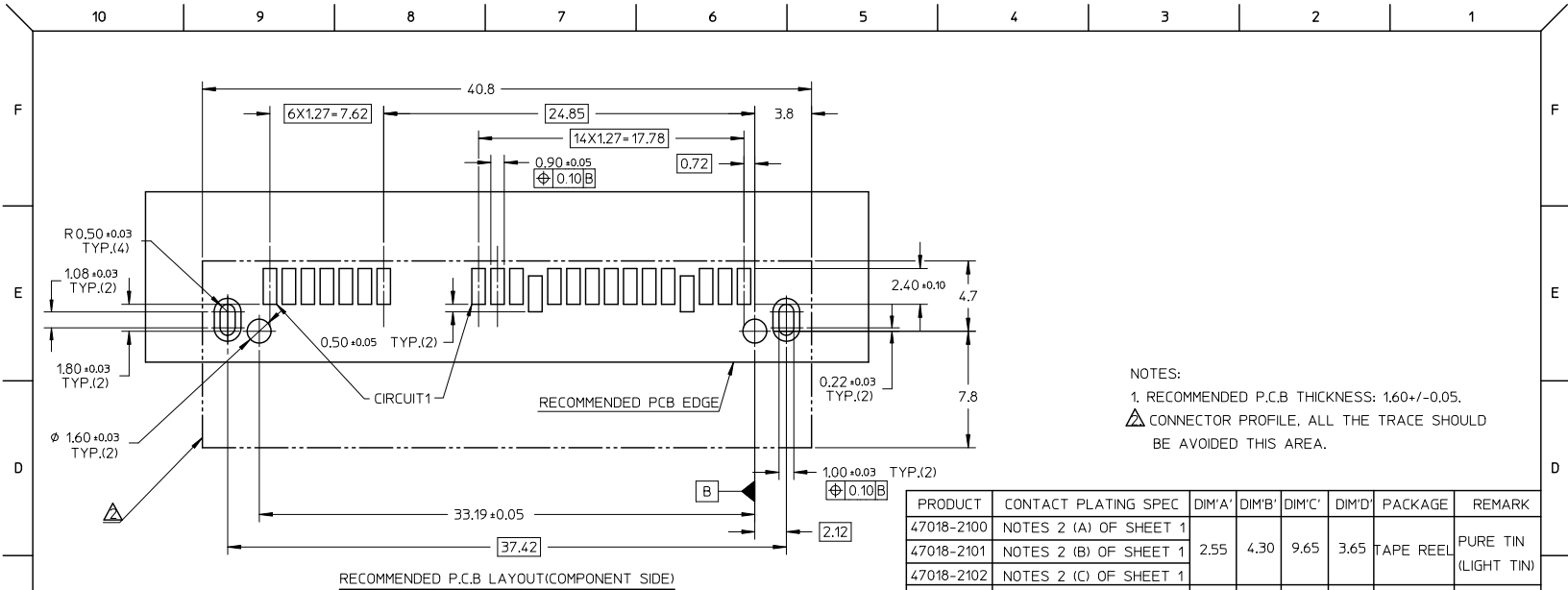


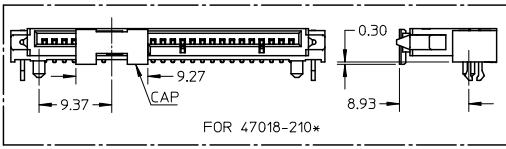
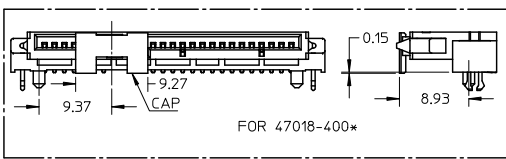
- NOTES:
- MATERIAL:
 - HOUSING: THERMAL PLASTIC, GLASS FILLED, UL94V-0. COLOR: BLACK;
 - FORKLOCK: COPPER ALLOY;
 - TERMINALS: COPPER ALLOY.
 - TERMINAL PLATING:
 - CONTACT AREA:
 - (a) GOLD FLASH(0.025 MICRONS MINIMUM);
 - (b) GOLD, THICKNESS=0.76 MICRONS MINIMUM;
 - (c) GOLD, THICKNESS=0.38 MICRONS MINIMUM;
 - SOLDER AREA: TIN, THICKNESS=2.00 MICRONS MINIMUM;
 - UNDER PLATE: NICKEL, THICKNESS=1.27 MICRONS MINIMUM.
 - FORLOCK PLATING:
 - SOLDER AREA: TIN, THICKNESS=2.00 MICRONS MINIMUM;
 - UNDER PLATING: NICKEL, THICKNESS=1.27 MICRONS MINIMUM.
 - PRODUCT SPECIFICATION: PS-67492-001.
 - PACKAGING METHOD: 47018-400*, TAPE REEL, DETAIL REFER TO PK-47018-003; 47018-210*, TAPE REEL, DETAIL REFER TO PK-47018-004; OTHERS, TRAY, DETAIL REFER TO PK-67492-001.
 - MATING PARTS: 87703/87672.
 - PRODUCT COMPLIANT TO RoSH DIRECTIVE 2002/95/EC AND 2000/53/EC.

| | | | | | | | | | |
|---|--------------------|--|--|--------------------|------------------------------|---------------------|--|-------|---|
| ADD PARTS EC NO: SH2011-0008 DRAWN BY: GORWINGELLI CHYK: 2010/07/05 APPR: RZHHANG 2010/10/12 | DESCRIPTION REV | QUALITY SYMBOLS | GENERAL TOLERANCES (UNLESS SPECIFIED) | DIMENSION STYLE | SCALE | DESIGN UNITS | THIRD ANGLE PROJECTION | | |
| | | $\nabla=0$ $\nabla=0$ $\nabla=0$ | mm INCH 4 PLACES ± --- ± --- 3 PLACES ± --- ± --- 2 PLACES ± 0.25 ± --- 1 PLACE ± 0.25 ± --- ANGULAR ± 3° | MM ONLY | 2:1 | METRIC | DRAWN BY: TOM LI DATE: 2004/10/25 CHECKED BY: GRATE MA DATE: 2004/10/25 APPROVED BY: VINCENT DATE: 2004/10/25 | TITLE | SERIAL ATA DOCKING CONNECTOR TOP MOUNT TYPE |
| | | DRAFT WHERE APPLICABLE MUST REMAIN WITHIN DIMENSIONS | MATERIAL NO. SEE SGEET 2 | MOLEX INCORPORATED | DOCUMENT NO. SD-47018-001 | SHEET NO. 1 OF 2 | | | |
| | | THIS DRAWING CONTAINS INFORMATION THAT IS PROPRIETARY TO MOLEX INCORPORATED AND SHOULD NOT BE USED WITHOUT WRITTEN PERMISSION | | | | | | | |



NOTES:
 1. RECOMMENDED P.C.B THICKNESS: 1.60±0.05.
 △ CONNECTOR PROFILE. ALL THE TRACE SHOULD BE AVOIDED THIS AREA.

| PRODUCT | CONTACT PLATING SPEC | DIM'A | DIM'B | DIM'C | DIM'D | PACKAGE | REMARK |
|------------|------------------------|-------|-------|-------|-------|-----------|----------------------|
| 47018-2100 | NOTES 2 (A) OF SHEET 1 | | | | | | |
| 47018-2101 | NOTES 2 (B) OF SHEET 1 | 2.55 | 4.30 | 9.65 | 3.65 | TAPE REEL | PURE TIN (LIGHT TIN) |
| 47018-2102 | NOTES 2 (C) OF SHEET 1 | | | | | | |
| 47018-4000 | NOTES 2 (A) OF SHEET 1 | | | | | | |
| 47018-4001 | NOTES 2 (B) OF SHEET 1 | 3.40 | 5.15 | 10.50 | 4.50 | TAPE REEL | PURE TIN (LIGHT TIN) |
| 47018-4002 | NOTES 2 (C) OF SHEET 1 | | | | | | |
| 47018-3000 | NOTES 2 (A) OF SHEET 1 | | | | | | |
| 47018-3001 | NOTES 2 (B) OF SHEET 1 | 2.95 | 4.70 | 10.05 | 4.05 | TRAY | PURE TIN (LIGHT TIN) |
| 47018-3002 | NOTES 2 (C) OF SHEET 1 | | | | | | |
| 47018-2010 | NOTES 2 (A) OF SHEET 1 | | | | | | |
| 47018-2011 | NOTES 2 (B) OF SHEET 1 | 2.55 | 4.30 | 9.65 | 3.65 | TRAY | PURE TIN (MATTE TIN) |
| 47018-2012 | NOTES 2 (C) OF SHEET 1 | | | | | | |
| 47018-2000 | NOTES 2 (A) OF SHEET 1 | | | | | | |
| 47018-2001 | NOTES 2 (B) OF SHEET 1 | 2.55 | 4.30 | 9.65 | 3.65 | TRAY | PURE TIN (LIGHT TIN) |
| 47018-2002 | NOTES 2 (C) OF SHEET 1 | | | | | | |



| ADD PARTS EC NO: SH2011-0008 DRAWING: 2010/07/05 CHKD: 2010/10/12 APPR: ZHANG | DESCRIPTION QUALITY SYMBOLS ▽=0 ▽=0 ▽=0 | GENERAL TOLERANCES (UNLESS SPECIFIED) <table border="1"> <tr> <th></th> <th>mm</th> <th>INCH</th> </tr> <tr> <td>4 PLACES</td> <td>± ---</td> <td>± ---</td> </tr> <tr> <td>3 PLACES</td> <td>± ---</td> <td>± ---</td> </tr> <tr> <td>2 PLACES</td> <td>± 0.25</td> <td>± ---</td> </tr> <tr> <td>1 PLACE</td> <td>± 0.25</td> <td>± ---</td> </tr> <tr> <td colspan="3">ANGULAR ± 3°</td> </tr> </table> | | mm | INCH | 4 PLACES | ± --- | ± --- | 3 PLACES | ± --- | ± --- | 2 PLACES | ± 0.25 | ± --- | 1 PLACE | ± 0.25 | ± --- | ANGULAR ± 3° | | | DIMENSION STYLE MM ONLY | SCALE 1:1 | DESIGN UNITS METRIC | <input checked="" type="checkbox"/> THIRD ANGLE PROJECTION |
|--|--|--|---------------------------|---|-------|----------|-------|-------|----------|-------|-------|----------|--------|-------|---------|--------|-------|--------------|--|--|-----------------------------------|---------------------|-------------------------------|--|
| | | | | mm | INCH | | | | | | | | | | | | | | | | | | | |
| | | | 4 PLACES | ± --- | ± --- | | | | | | | | | | | | | | | | | | | |
| | | | 3 PLACES | ± --- | ± --- | | | | | | | | | | | | | | | | | | | |
| 2 PLACES | ± 0.25 | ± --- | | | | | | | | | | | | | | | | | | | | | | |
| 1 PLACE | ± 0.25 | ± --- | | | | | | | | | | | | | | | | | | | | | | |
| ANGULAR ± 3° | | | | | | | | | | | | | | | | | | | | | | | | |
| DRAWN BY TOM LI | DATE 2004/10/25 | CHECKED BY GRATE MA | DATE 2004/10/25 | TITLE SERIAL ATA DOCKING CONNECTOR TOP MOUNT TYPE | | | | | | | | | | | | | | | | | | | | |
| APPROVED BY VINCENT | DATE 2004/10/25 | MOLEX INCORPORATED | | | | | | | | | | | | | | | | | | | | | | |
| MATERIAL NO. SEE TABLE | DOCUMENT NO. SD-47018-001 | SHEET NO. 2 OF 2 | | | | | | | | | | | | | | | | | | | | | | |