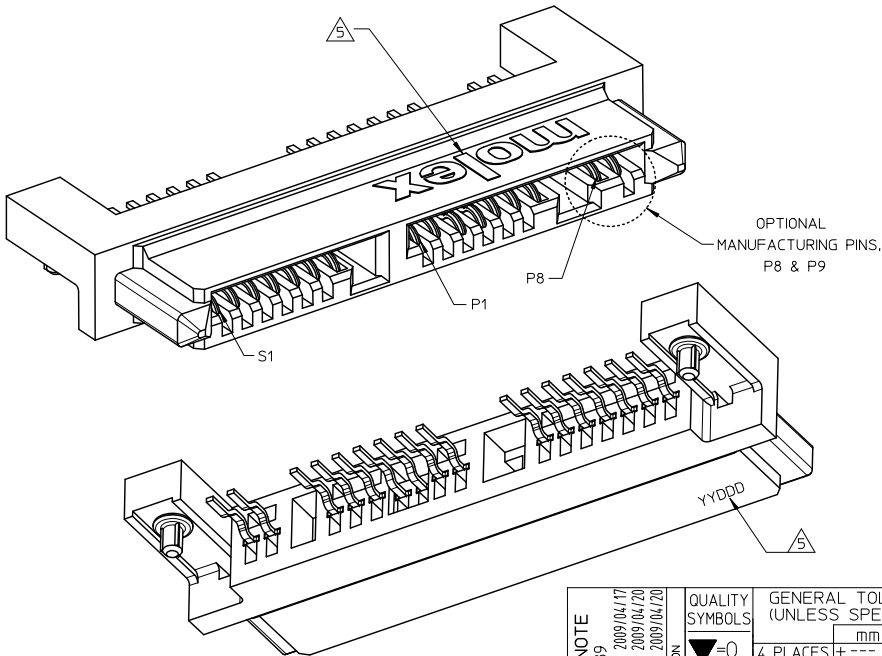


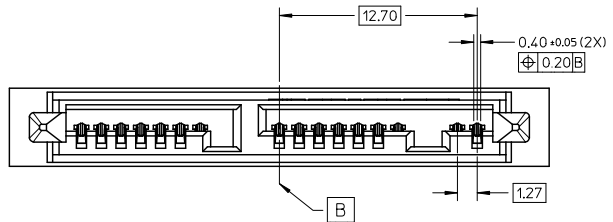
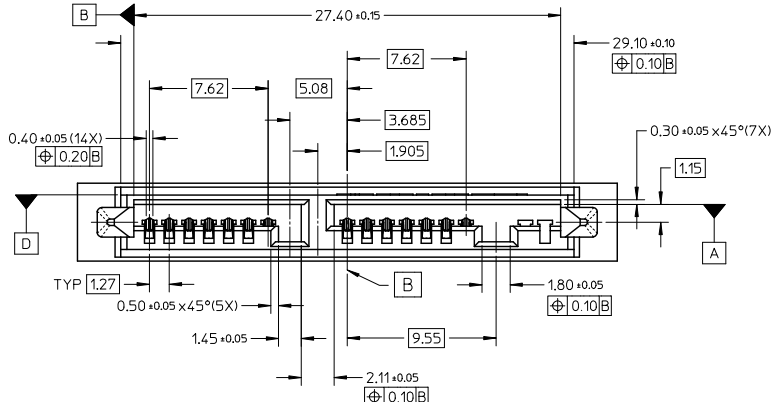
10	9	8	7	6	5	4	3	2	1
PART NUMBER	TOTAL PINS	DESCRIPTION		HOUSING MATERIAL		PACKAGING		REMARKS	
78109-0001	16	WITH OPTIONAL MANUFACTURING PINS (S1 TO S7 & P1 TO P9)		NYLON (PA) 9T, GLASS FILLED, UL 94V-0, BLACK.		TRAY		WITHOUT CAP	
78109-0012						TAPE AND REEL		WITH CAP	
78109-1001	14	WITHOUT OPTIONAL MANUFACTURING PINS (S1 TO S7 & P1 TO P7)				TRAY		WITHOUT CAP	
78109-1012						TAPE AND REEL		WITH CAP	



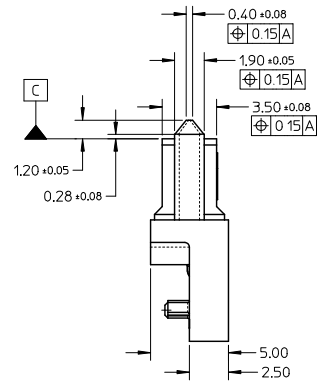
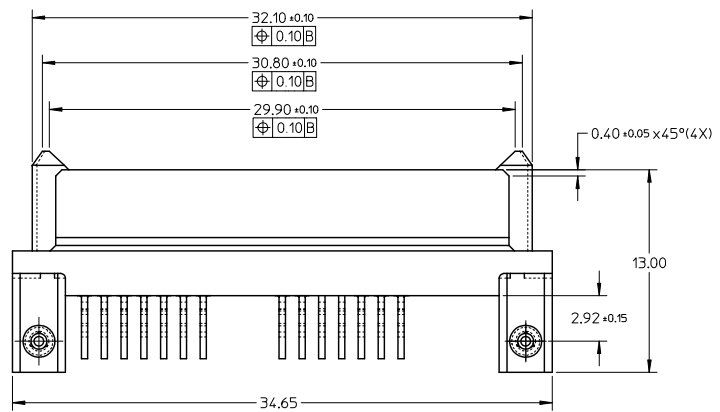
- NOTES:
- MATERIAL : SEE TABLE
TERMINAL/LOCATING PIN : COPPER ALLOY
 - PLATING :
TERMINAL : 0.76µm MIN. SELECTIVE GOLD OVER
1.27µm MIN. NICKEL UNDERPLATE
2.54µm MIN. TIN OVER
LOCATING PIN : 3.81µm MIN. TIN OVER
2.00µm MIN. NICKEL UNDERPLATE
 - PRODUCT SPECIFICATION : PS-78109-001
 - MATES WITH MICRO SATA PLUG SERIES : 78283
 - MOLEX LOGO LOCATED APPROXIMATELY AS SHOWN
 - DATE CODE LOCATED APPROXIMATELY AS SHOWN
 - PACKAGING : SEE TABLE
 - THIS PRODUCT IS COMPLIANT TO RoHS DIRECTIVE WITH THE FOLLOWING BANNED SUBSTANCES - LEAD, MERCURY, CADMIUM, HEXAVALENT CHROMIUM, POLYBROMINATED BIPHENYLS AND POLYBROMINATED DIPHENYLS ETHERS.
 - NON FUNCTIONAL CORING MAY VARY.

ADD P/NO. & NOTE EEC NO: S22009-0789 DRAWN: JIAN02 CHYK: KHLIM APPR: BOXOK 2009/04/17 2009/04/20 2009/04/20	QUALITY SYMBOLS 	GENERAL TOLERANCES (UNLESS SPECIFIED)		DIMENSION STYLE MM ONLY	SCALE NTS	DESIGN UNITS METRIC	THIRD ANGLE PROJECTION		
		4 PLACES ± --- ± ---	3 PLACES ± --- ± ---	DRAWN BY YKOH	DATE 2006/06/27	TITLE SERIAL ATA RECEPTACLE 1.8 INCH HDD RIGHT-ANGLE, SMT			
		2 PLACES ± 0.20 ± ---	1 PLACE ± --- ± ---	CHECKED BY SHONG	DATE 2006/07/28	MOLEX INCORPORATED			
		ANGULAR ± 3°		APPROVED BY KCLING	DATE 2006/07/28	MATERIAL NO. SEE TABLE	DOCUMENT NO. SD-78109-001	SHEET NO. 1 OF 6	

10 9 8 7 6 5 4 3 2 1



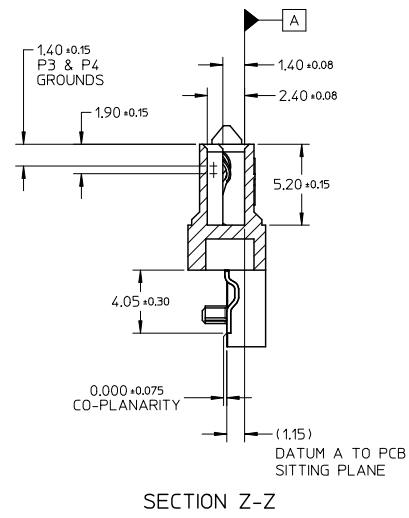
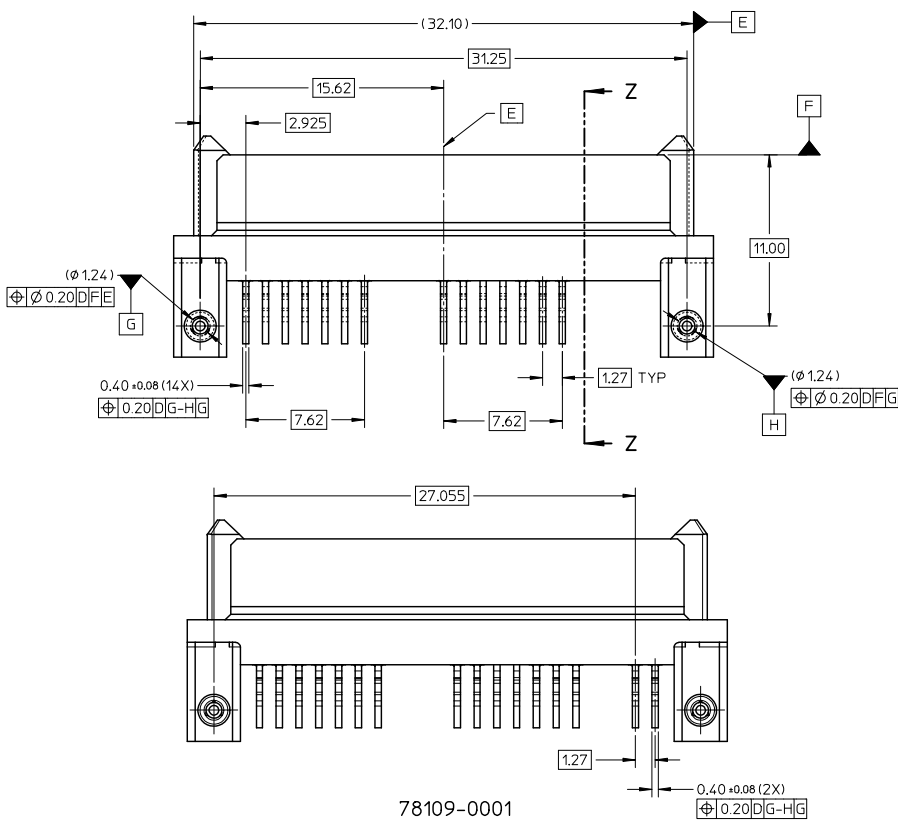
78109-0001



ADD P/NO. & NOTE EC NO: S2009-0789 DRWN: JIAN02 CHKD: HLM APPR: BOXOK 2009/04/17 2009/04/20 2009/04/20	QUALITY SYMBOLS =0 =0	GENERAL TOLERANCES (UNLESS SPECIFIED) <table border="1"> <tr> <th></th> <th>mm</th> <th>INCH</th> </tr> <tr> <td>4 PLACES</td> <td>± ---</td> <td>± ---</td> </tr> <tr> <td>3 PLACES</td> <td>± ---</td> <td>± ---</td> </tr> <tr> <td>2 PLACES</td> <td>± 0.20</td> <td>± ---</td> </tr> <tr> <td>1 PLACE</td> <td>± ---</td> <td>± ---</td> </tr> <tr> <td colspan="3">ANGULAR ± 3°</td> </tr> </table>		mm	INCH	4 PLACES	± ---	± ---	3 PLACES	± ---	± ---	2 PLACES	± 0.20	± ---	1 PLACE	± ---	± ---	ANGULAR ± 3°			DIMENSION STYLE MM ONLY	SCALE NTS	DESIGN UNITS METRIC	THIRD ANGLE PROJECTION
				mm	INCH																			
			4 PLACES	± ---	± ---																			
			3 PLACES	± ---	± ---																			
2 PLACES	± 0.20	± ---																						
1 PLACE	± ---	± ---																						
ANGULAR ± 3°																								
REV A	DESCRIPTION SERIAL ATA RECEPTACLE 1.8 INCH HDD RIGHT-ANGLE, SMT	DRAWN BY: YKOH DATE: 2006/06/27	CHECKED BY: SHONG DATE: 2006/07/28	APPROVED BY: KCLING DATE: 2006/07/28	MOLEX INCORPORATED	DOCUMENT NO. SD-78109-001																		
		MATERIAL NO. SEE TABLE	SHEET NO. 2 OF 6	THIS DRAWING CONTAINS INFORMATION THAT IS PROPRIETARY TO MOLEX INCORPORATED AND SHOULD NOT BE USED WITHOUT WRITTEN PERMISSION																				

9 8 7 6 5 4 3 2 1

10 9 8 7 6 5 4 3 2 1

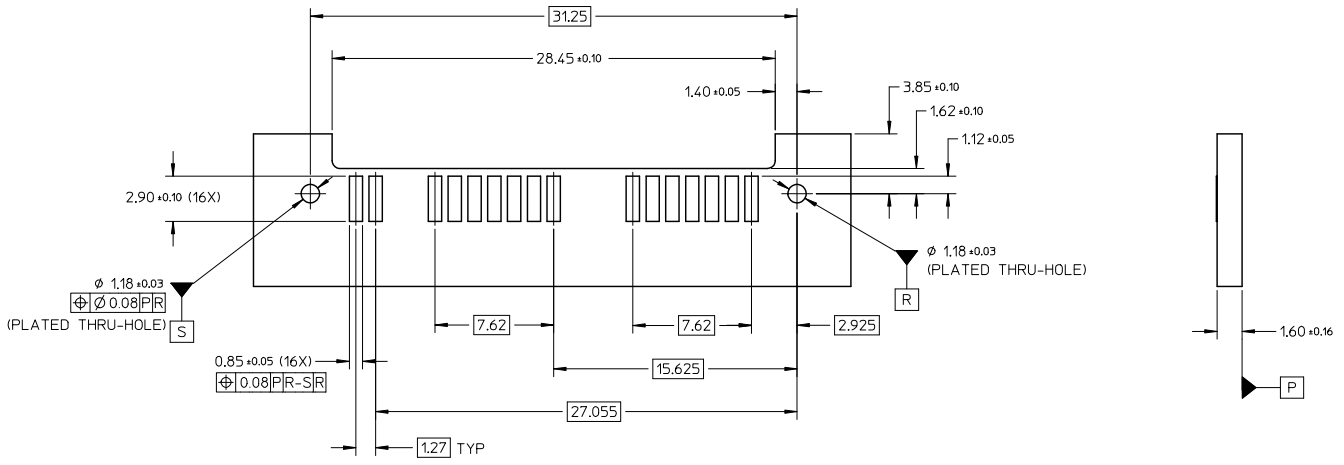


78109-0001

ADD P/NO. & NOTE EEC NO: S2009-0789 DRWN: JIAN02 CHKD: HLM APPR: BOXOK 2009/04/17 2009/04/20 2009/04/20	QUALITY SYMBOLS ▽=0 ▽=0	GENERAL TOLERANCES (UNLESS SPECIFIED)		DIMENSION STYLE MM ONLY		SCALE NTS	DESIGN UNITS METRIC	THIRD ANGLE PROJECTION	
		4 PLACES ± --- ± ---	mm INCH	DRAWN BY YKOH	DATE 2006/06/27	TITLE SERIAL ATA RECEPTACLE 1.8 INCH HDD RIGHT-ANGLE, SMT			
		3 PLACES ± --- ± ---	2 PLACES ± 0.20 ± ---	CHECKED BY SHONG	DATE 2006/07/28	MOLEX INCORPORATED			
		1 PLACE ± --- ± ---	ANGULAR ± 3°	APPROVED BY KCLING	DATE 2006/07/28	MATERIAL NO. SEE TABLE	DOCUMENT NO. SD-78109-001	SHEET NO. 3 OF 6	
DRAFT WHERE APPLICABLE MUST REMAIN WITHIN DIMENSIONS		THIS DRAWING CONTAINS INFORMATION THAT IS PROPRIETARY TO MOLEX INCORPORATED AND SHOULD NOT BE USED WITHOUT WRITTEN PERMISSION							

9 8 7 6 5 4 3 2 1

10 9 8 7 6 5 4 3 2 1

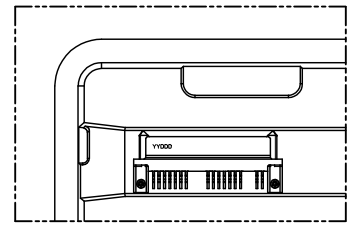
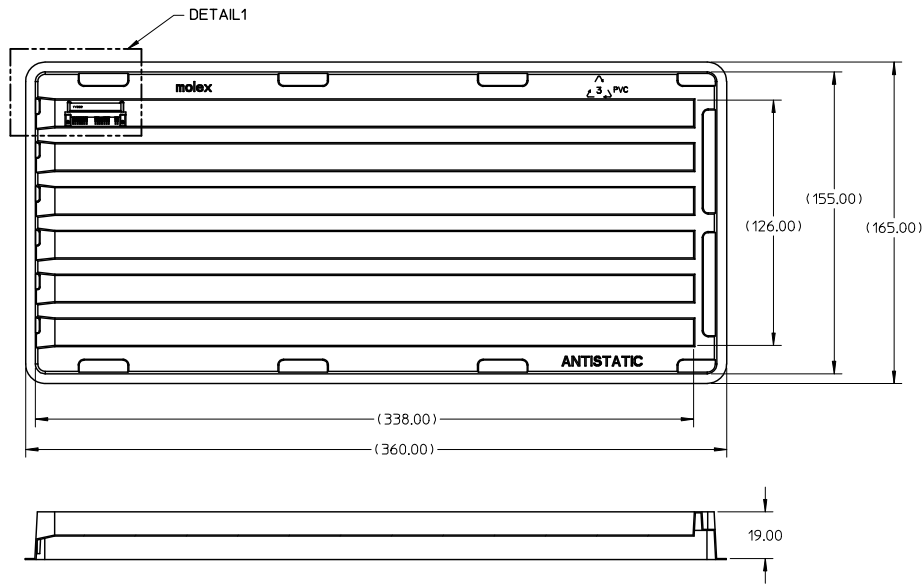


RECOMMENDED PCB LAYOUT

ADD P/NO. & NOTE EC NO: S2009-0789 DRWN: JIAN02 2009/04/17 CHK: KHLIM 2009/04/20 APPR: BOXOK 2009/04/20 REV: A	QUALITY SYMBOLS ▽=0 ▽=0	GENERAL TOLERANCES (UNLESS SPECIFIED)		DIMENSION STYLE MM ONLY	SCALE NTS	DESIGN UNITS METRIC	◎ THIRD ANGLE PROJECTION	
		4 PLACES ± --- ± ---	mm INCH	DRAWN BY YKOH	DATE 2006/06/27	TITLE SERIAL ATA RECEPTACLE 1.8 INCH HDD RIGHT-ANGLE, SMT		
		3 PLACES ± --- ± ---	± 0.20 ± ---	CHECKED BY SHONG	DATE 2006/07/28	MOLEX INCORPORATED		
		2 PLACES ± --- ± ---	± --- ± ---	APPROVED BY KCLING	DATE 2006/07/28	MATERIAL NO. SEE TABLE	DOCUMENT NO. SD-78109-001	SHEET NO. 4 OF 6
DRAFT WHERE APPLICABLE MUST REMAIN WITHIN DIMENSIONS		THIS DRAWING CONTAINS INFORMATION THAT IS PROPRIETARY TO MOLEX INCORPORATED AND SHOULD NOT BE USED WITHOUT WRITTEN PERMISSION						

9 8 7 6 5 4 3 2 1

PACKAGING INFORMATION : TRAY



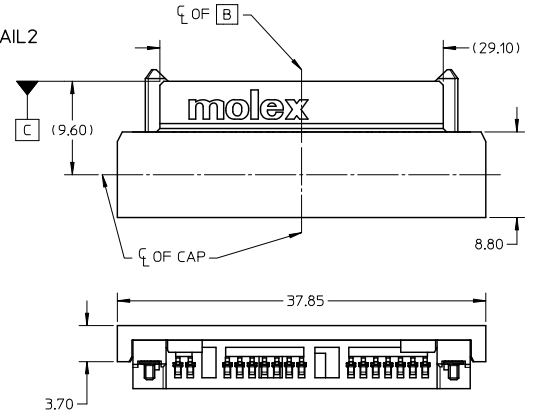
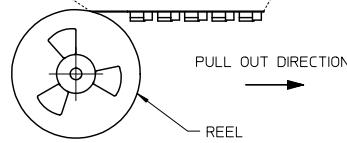
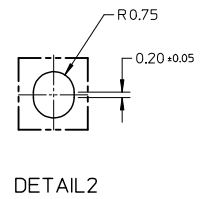
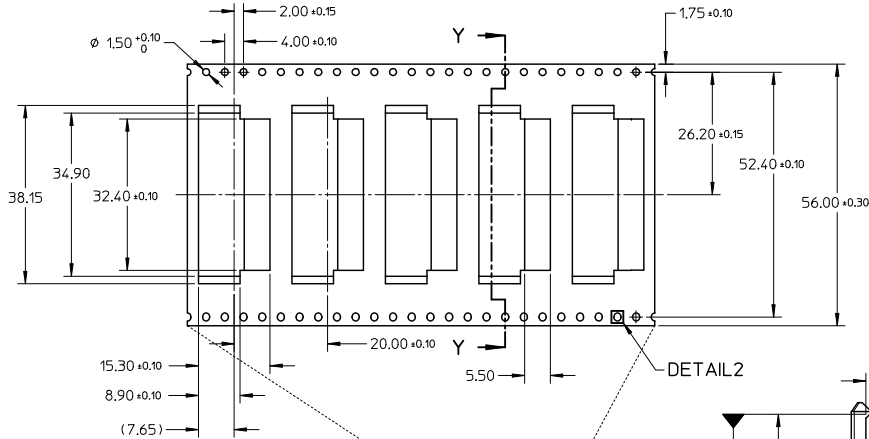
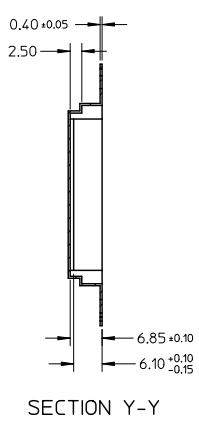
DETAIL1

NOTES:

1. PACKAGING QUANTITY : 54 PCS PER TRAY
2. MATERIAL : PVC - CLEAR, ANTISTATIC
0.70MM THICK (PRE-FORMED)

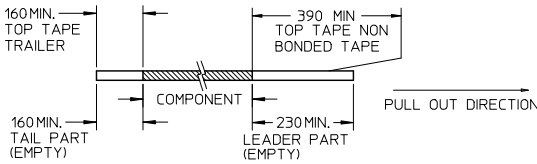
ADD P/NO. & NOTE EIC NO: S2009-0789 DRWN: JIAN02 CHK: KHLIM APPR: BOXOK 2009/04/17 2009/04/20 2009/04/20	QUALITY SYMBOLS ▽=0 ▽=0	GENERAL TOLERANCES (UNLESS SPECIFIED)		DIMENSION STYLE MM ONLY		SCALE NTS	DESIGN UNITS METRIC	THIRD ANGLE PROJECTION						
		4 PLACES ± --- ± ---	3 PLACES ± --- ± ---	2 PLACES ± 0.20 ± ---	1 PLACE ± --- ± ---	ANGULAR ± 3°	DRAFT WHERE APPLICABLE MUST REMAIN WITHIN DIMENSIONS	DRAWN BY YKOH	DATE 2006/06/27	CHECKED BY SHONG	DATE 2006/07/28	APPROVED BY KCLING	DATE 2006/07/28	TITLE SERIAL ATA RECEPTACLE 1.8 INCH HDD RIGHT-ANGLE, SMT
		MATERIAL NO. SEE TABLE		MOLEX INCORPORATED		DOCUMENT NO. SD-78109-001	SHEET NO. 5 OF 6							
		THIS DRAWING CONTAINS INFORMATION THAT IS PROPRIETARY TO MOLEX INCORPORATED AND SHOULD NOT BE USED WITHOUT WRITTEN PERMISSION												

PACKAGING INFORMATION : TAPE & REEL

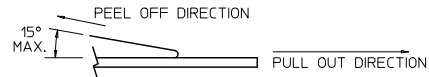


NOTES:

1. LEADER AND TRAILER TAPE



2. PEELING OFF FORCE OF THE TOP TAPE: 20 - 80gf.
(PEELING DIRECTION AS SHOWN IN FOLLOWING FIGURE)



- 3. TAPE AND REEL SPECIFICATION IS AS PER EIA-481.
- 4. TAPE AND REEL QUANTITY : 480 PCS/ REEL.
- 5. THE TAPE IS TREATED FOR ANTI-STATIC.

ADD P/NO. & NOTE EIC NO: S22009-0789 DRWN: JIAN02 CHYKHLIM APPR: BOXOK 2009/04/17 2009/04/20 2009/04/20	DESCRIPTION A	QUALITY SYMBOLS ▽=0 ▽=0	GENERAL TOLERANCES (UNLESS SPECIFIED)		DIMENSION STYLE MM ONLY	SCALE NTS	DESIGN UNITS METRIC	THIRD ANGLE PROJECTION		
			4 PLACES ± --- ± ---	3 PLACES ± --- ± ---	DRAWN BY YKOH	DATE 2006/06/27	TITLE SERIAL ATA RECEPTACLE 1.8 INCH HDD RIGHT-ANGLE, SMT			
			2 PLACES ± 0.20 ± ---	1 PLACE ± --- ± ---	CHECKED BY SHONG	DATE 2006/07/28	MOLEX INCORPORATED			
			ANGULAR ± 3°		APPROVED BY KCLING	DATE 2006/07/28	MATERIAL NO. SEE TABLE	DOCUMENT NO. SD-78109-001	SHEET NO. 6 OF 6	