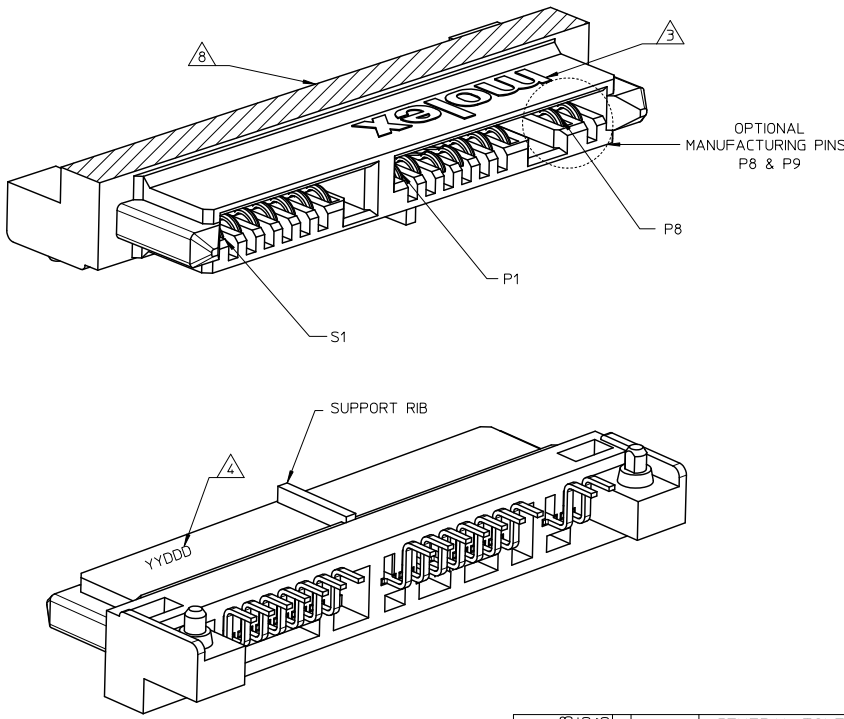


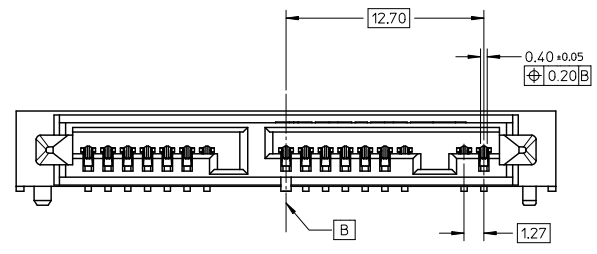
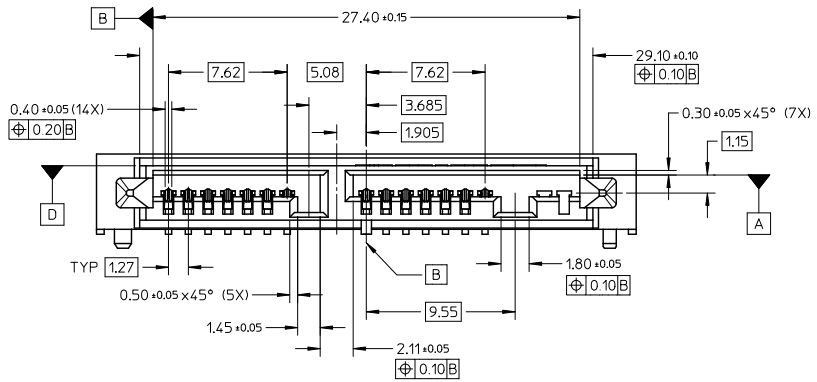
5	4	3	2	1
PART NUMBER	TOTAL PINS	DESCRIPTION		
78320-0002	16	WITH OPTIONAL MANUFACTURING PINS (S1 TO S7 & P1 TO P9)		
78320-1002	14	WITHOUT OPTIONAL MANUFACTURING PINS (S1 TO S7 & P1 TO P7)		



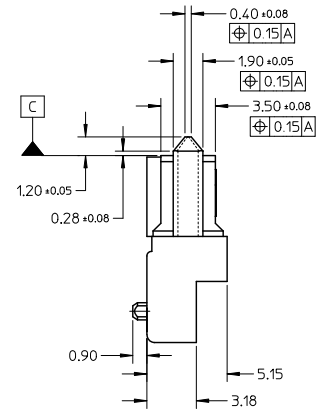
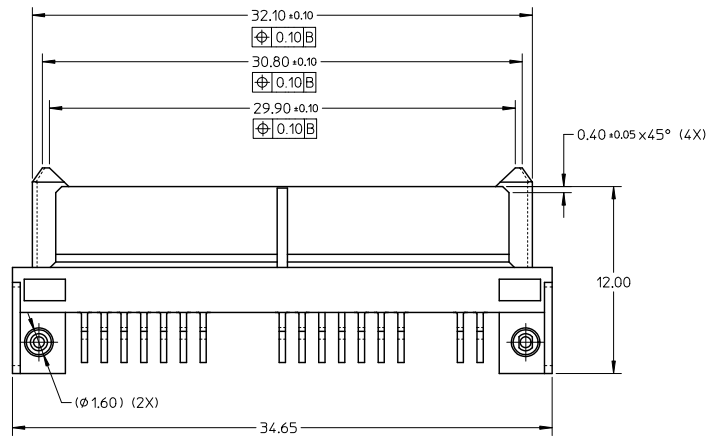
- NOTES:
- MATERIAL : NYLON (PA) 9T, GLASS FILLED, UL 94V-0, BLACK
TERMINAL : COPPER ALLOY
 - PLATING :
TERMINAL : 0.764μm MIN. SELECTIVE GOLD OVER
1.274μm MIN. NICKEL UNDERPLATE
2.544μm MIN. TIN OVER
1.274μm MIN. NICKEL UNDERPLATE
 - MOLEX LOGO LOCATED APPROXIMATELY AS SHOWN
 - DATE CODE LOCATED APPROXIMATELY AS SHOWN
 - PACKAGING : TAPE AND REEL
 - THIS PRODUCT IS COMPLIANT TO RoHS DIRECTIVE WITH THE FOLLOWING BANNED SUBSTANCES - LEAD, MERCURY, CADMIUM, HEXAVALENT CHROMIUM, POLYBROMINATED BIPHENYLS AND POLYBROMINATED DIPHENYLS ETHERS.
 - NON FUNCTIONAL CORING MAY VARY.
 - PROPOSED PICK & PLACE SURFACE.
 - PRODUCT SPECIFICATION: PS-78320-002

SEE SHEET 5 EC NO: S2010-1046 DRAWN BY: GMENARLY 2010/06/28 CHECKED BY: CHYKSCHEONG 2010/07/05 APPR: BOKKOK 2010/07/06 A3	QUALITY SYMBOLS	GENERAL TOLERANCES (UNLESS SPECIFIED)	DIMENSION STYLE MM ONLY	SCALE NTS	DESIGN UNITS METRIC	THIRD ANGLE PROJECTION
	▽=0	4 PLACES ± --- ± ---	DRAWN BY DATE GMENARLY 2007/10/08	TITLE SERIAL ATA RECEPTACLE 1.8 INCH HDD/SSD R/A, SMT, 3.80MM HEIGHT		
	▽=0	3 PLACES ± --- ± ---	CHECKED BY DATE YKOH 2007/11/21	MOLEX INCORPORATED		
	▽=0	2 PLACES ± 0.20 ± ---	APPROVED BY DATE BOKKOK 2010/01/26	MATERIAL NO. SEE TABLE	DOCUMENT NO. SD-78320-002	SHEET NO. 1 OF 5
	▽=0	1 PLACE ± --- ± ---	ANGULAR ± 3°	THIS DRAWING CONTAINS INFORMATION THAT IS PROPRIETARY TO MOLEX INCORPORATED AND SHOULD NOT BE USED WITHOUT WRITTEN PERMISSION		
DRAFT WHERE APPLICABLE MUST REMAIN WITHIN DIMENSIONS						

10 9 8 7 6 5 4 3 2 1



78320-0002

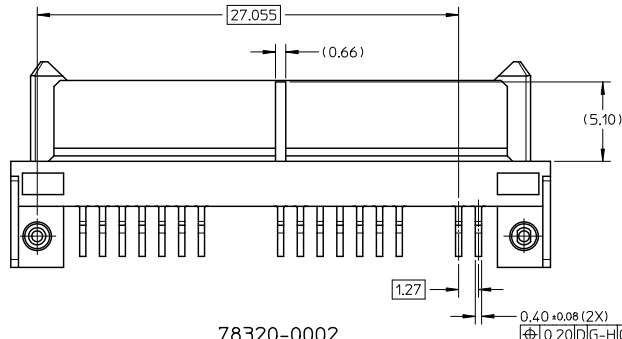
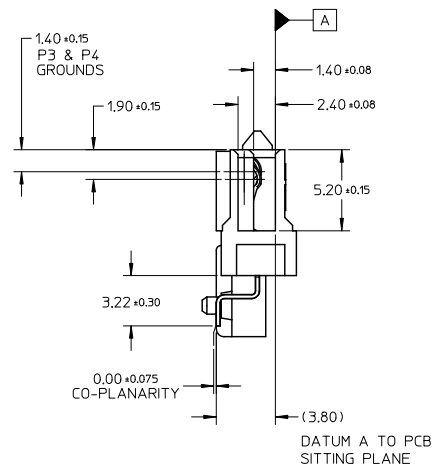
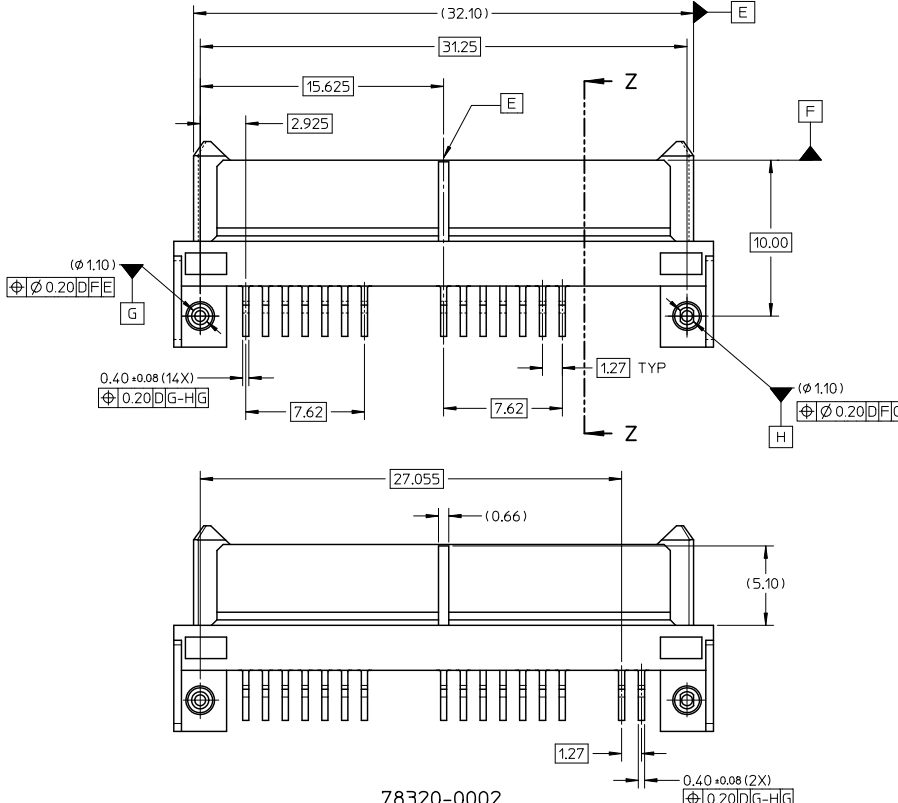


SEE SHEET 5 EC NO: S2010-1046 DRAWN BY: GMENARLY 2010/06/28 CHECKED BY: CHYKSCHEONG 2010/07/05 APPR: BOKKOK 2010/07/06	QUALITY SYMBOLS □=0 □=0 □=0	GENERAL TOLERANCES (UNLESS SPECIFIED)		DIMENSION STYLE MM ONLY		SCALE NTS	DESIGN UNITS METRIC	THIRD ANGLE PROJECTION	
		4 PLACES ± --- ± ---	mm INCH	DRAWN BY GMENARLY	DATE 2007/10/08	TITLE SERIAL ATA RECEPTACLE 1.8 INCH HDD/SSD R/A, SMT, 3.80MM HEIGHT			
		3 PLACES ± --- ± ---		CHECKED BY YKOH	DATE 2007/11/21	MOLEX INCORPORATED			
		2 PLACES ± 0.20 ± ---		APPROVED BY BOKKOK	DATE 2010/01/26	MATERIAL NO. SEE TABLE DOCUMENT NO. SD-78320-002 SHEET NO. 2 OF 5			
1 PLACE ± --- ± ---		ANGULAR ± 3°		DRAFT WHERE APPLICABLE MUST REMAIN WITHIN DIMENSIONS		THIS DRAWING CONTAINS INFORMATION THAT IS PROPRIETARY TO MOLEX INCORPORATED AND SHOULD NOT BE USED WITHOUT WRITTEN PERMISSION			

tb_frame_A3_P_AM.T
Rev. F 2009/06/18

9 8 7 6 5 4 3 2 1

10 9 8 7 6 5 4 3 2 1



78320-0002

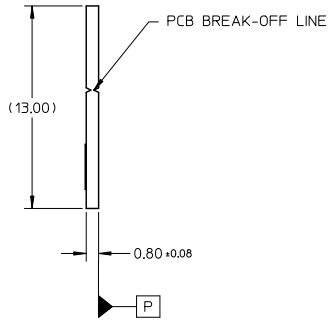
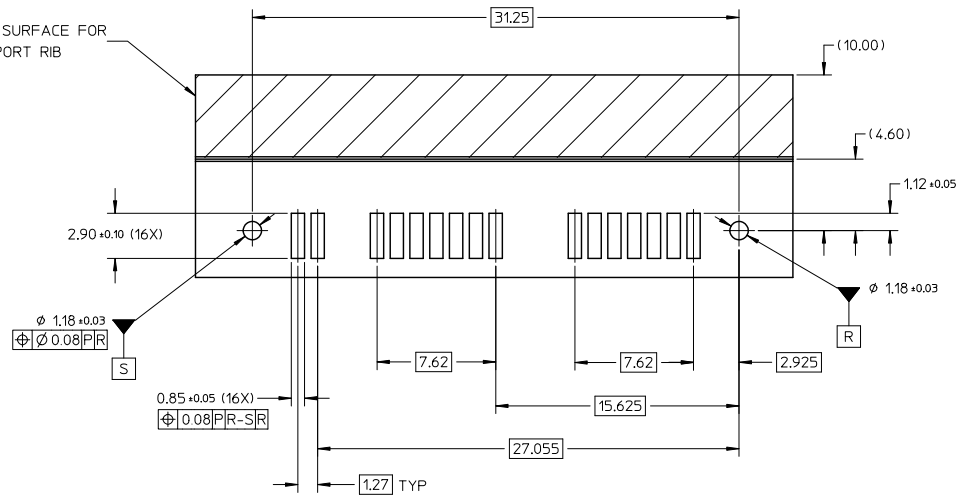
SEE SHEET 5 EC NO: S2010-1046 DRAWN BY: GMENARLY 2010/06/28 CHECKED BY: CHYKSCHEONG 2010/07/05 APPR: BOKKOK 2010/07/06	QUALITY SYMBOLS □=0 □=0 □=0	GENERAL TOLERANCES (UNLESS SPECIFIED)		DIMENSION STYLE		SCALE	DESIGN UNITS	THIRD ANGLE PROJECTION	
		mm	INCH	MM ONLY		NTS	METRIC		
		4 PLACES ± ---	± ---	DRAWN BY	DATE	TITLE	SERIAL ATA RECEPTACLE		
		3 PLACES ± ---	± ---	GMENARLY	2007/10/08	1.8 INCH HDD/SSD			
2 PLACES ± 0.20	± ---	CHECKED BY	DATE	R/A, SMT, 3.80MM HEIGHT					
1 PLACE ± ---	± ---	YKOH	2007/11/21	MOLEX INCORPORATED					
ANGULAR ± 3°		APPROVED BY	DATE	MATERIAL NO.		DOCUMENT NO.	SHEET NO.		
DRAFT WHERE APPLICABLE MUST REMAIN WITHIN DIMENSIONS		BOKKOK	2010/01/26	SEE TABLE		SD-78320-002	3 OF 5		
				THIS DRAWING CONTAINS INFORMATION THAT IS PROPRIETARY TO MOLEX INCORPORATED AND SHOULD NOT BE USED WITHOUT WRITTEN PERMISSION					

tb_frame_A3_P_AM.T
Rev. F 2009/06/18

9 8 7 6 5 4 3 2 1

10 9 8 7 6 5 4 3 2 1

RESTING SURFACE FOR SUPPORT RIB



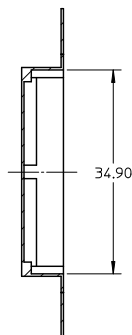
RECOMMENDED PCB LAYOUT

SEE SHEET 5 EC NO: S2010-1046 DRAWN BY: GMENARLY 2010/06/28 CHECKED BY: CHYKSCHEONG 2010/07/05 APPR: BOKKOK 2010/07/06	QUALITY SYMBOLS	GENERAL TOLERANCES (UNLESS SPECIFIED)	DIMENSION STYLE	SCALE	DESIGN UNITS	THIRD ANGLE PROJECTION
	$\nabla = 0$ $\nabla = 0$ $\nabla = 0$	mm INCH 4 PLACES ± --- ± --- 3 PLACES ± --- ± --- 2 PLACES ± 0.20 ± --- 1 PLACE ± --- ± --- ANGULAR ± 3°	MM ONLY	NTS	METRIC	
	DESCRIPTION	DRAFT WHERE APPLICABLE MUST REMAIN WITHIN DIMENSIONS	DRAWN BY: GMENARLY DATE: 2007/10/08 CHECKED BY: YKOH DATE: 2007/11/21 APPROVED BY: BOKKOK DATE: 2010/01/26	TITLE	SERIAL ATA RECEPTACLE 1.8 INCH HDD/SSD R/A, SMT, 3.80MM HEIGHT	
	REV		MATERIAL NO. SEE TABLE	MOLEX INCORPORATED	DOCUMENT NO. SD-78320-002	SHEET NO. 4 OF 5

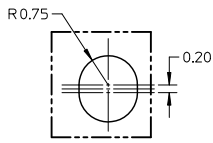
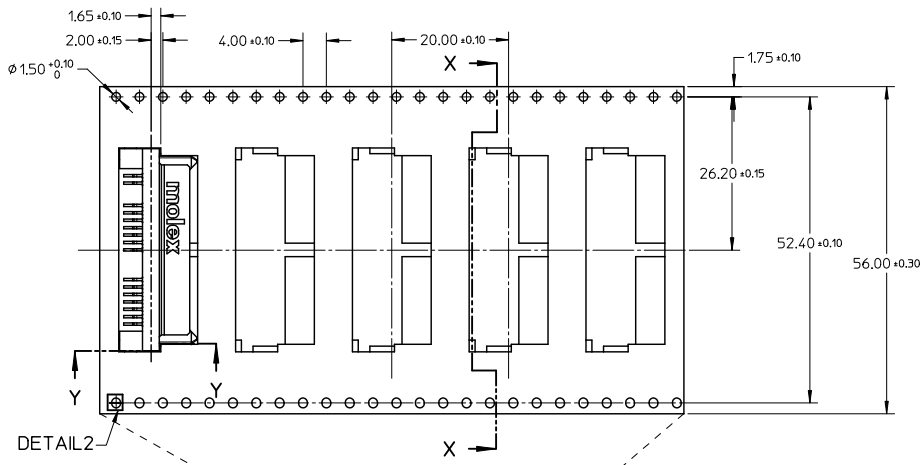
tb_frame_A3_P_AM_T Rev. F 2009/06/18

9 8 7 6 5 4 3 2 1

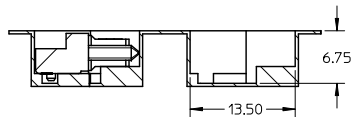
PACKAGING INFORMATION



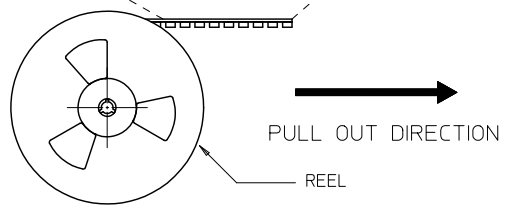
SECTION X-X



DETAIL2



PARTIAL1 OF SECTION Y-Y



- NOTES:
- LEADER AND TRAILER TAPE
 - PEELING OFF FORCE OF THE TOP TAPE: 20 - 80gf.
 (PEELING DIRECTION AS SHOWN IN FOLLOWING FIGURE)
 - TAPE AND REEL SPECIFICATION IS AS PER EIA-481.
 - TAPE AND REEL QUANTITY : SPO=500PCS/REEL, MDQ=1000PCS/CARTON
 : QTY/REEL=500PCS, REELS/CARTON=2
 - THE TAPE IS TREATED FOR ANTI-STATIC.

TYPED ERROR NOTE 4 ELEC NO: S22010-1046 DRAWING NO: 2010/06/28 CHYKSCHEONG 2010/07/05 APPR: BOKKOK 2010/07/06 A3	QUALITY SYMBOLS	GENERAL TOLERANCES (UNLESS SPECIFIED)	DIMENSION STYLE	SCALE	DESIGN UNITS	THIRD ANGLE PROJECTION
	$\nabla = 0$ $\nabla = 0$ $\nabla = 0$	mm INCH 4 PLACES ± --- ± --- 3 PLACES ± --- ± --- 2 PLACES ± 0.20 ± --- 1 PLACE ± --- ± --- ANGULAR ± 3°	MM ONLY	NTS	METRIC	
	DRAFT WHERE APPLICABLE MUST REMAIN WITHIN DIMENSIONS	DRAWN BY: GMENARLY CHECKED BY: YKOH APPROVED BY: BOKKOK DATE: 2007/10/08 DATE: 2007/11/21 DATE: 2010/01/26	TITLE: SERIAL ATA RECEPTACLE 1.8 INCH HDD/SSD R/A, SMT, 3.80MM HEIGHT	MOLEX INCORPORATED		
	MATERIAL NO. SEE TABLE SIZE A3	THIS DRAWING CONTAINS INFORMATION THAT IS PROPRIETARY TO MOLEX INCORPORATED AND SHOULD NOT BE USED WITHOUT WRITTEN PERMISSION		DOCUMENT NO. SD-78320-002	SHEET NO. 5 OF 5	